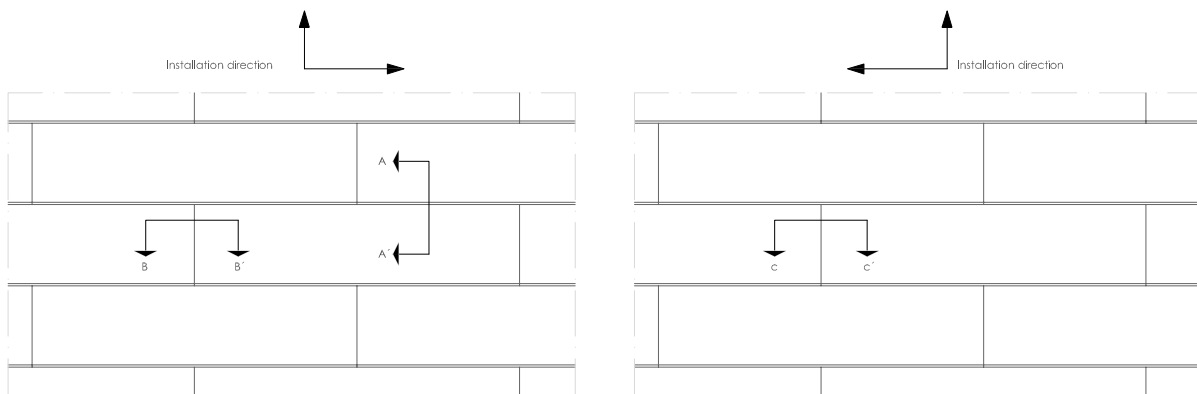
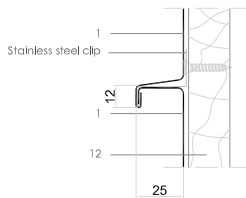


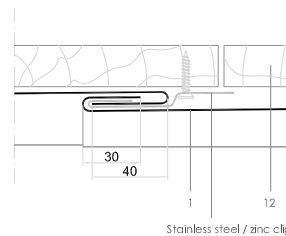
ASS H 1.1.02 Angle seam 25mm and cross joints.



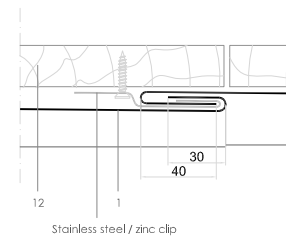
A-A': ANGLE STANDING SEAM ON SOFTWOOD BOARDING



B-B': ANGLE STANDING SEAM ON SOFTWOOD BOARDING



C-C': ANGLE STANDING SEAM ON SOFTWOOD BOARDING



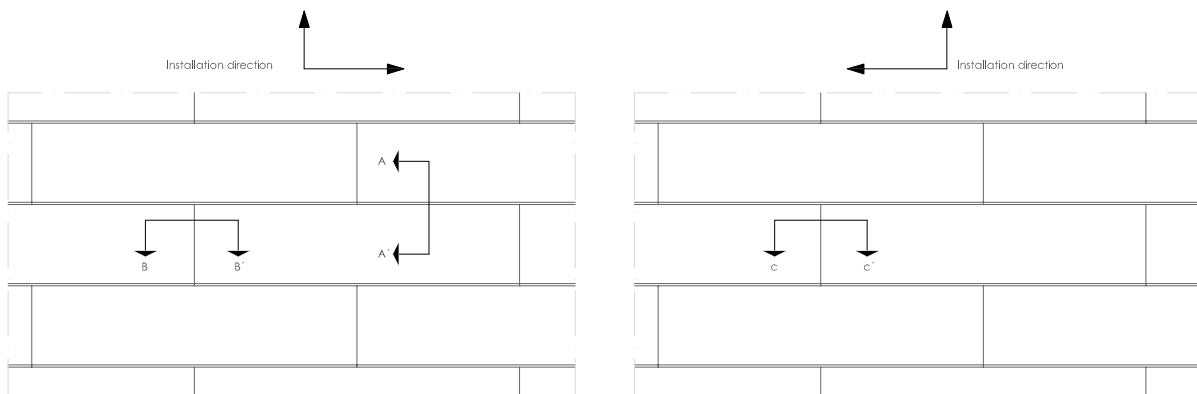
Scale 1/4

All dimensions are indicative unless specified on the drawing
Sheet thickness may be exaggerated for clarity

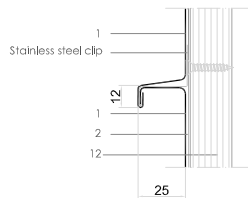
Notes:

- Typical profiled tray dimensions are shown. These can change slightly according to profiling machine manufacturer.
 - Fixed stainless steel clips are shown. Trays over 1.5m use sliding clips as well as fixed clips.
 - The elevation shows a staggered design. See our sales literature for more design possibilities.
1. elZinc® cladding
 2. Membrane
 3. Structural underlay
 4. Folded galvanised steel profiles
 5. elZinc® perforated sheet
 6. elZinc® retention profile
 7. Insulation
 8. Wooden batten
 9. Wall bracket
 10. Substrate

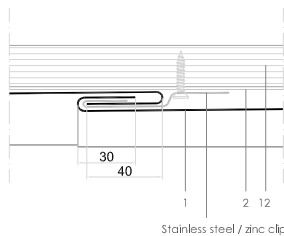
ASS H 1.1.02 Angle seam 25mm and cross joints.



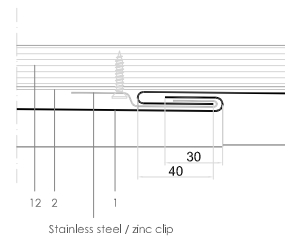
A-A', ANGLE STANDING SEAM ON SHEATHING



B-B', ANGLE STANDING SEAM ON SHEATHING



C-C', ANGLE STANDING SEAM ON SHEATHING



Scale 1/4

All dimensions are indicative unless specified on the drawing
Sheet thickness may be exaggerated for clarity

Notes:

- Typical profiled tray dimensions are shown. These can change slightly according to profiling machine manufacturer.
- Fixed stainless steel clips are shown. Trays over 1.5m use sliding clips as well as fixed clips.
- The elevation shows a staggered design. See our sales literature for more design possibilities.

1. elZinc® cladding
2. Membrane
3. Structural underlay
4. Folded galvanised steel profiles
5. elZinc® perforated sheet
6. elZinc® retention profile
7. Insulation
8. Wooden batten
9. Wall bracket
10. Substrate