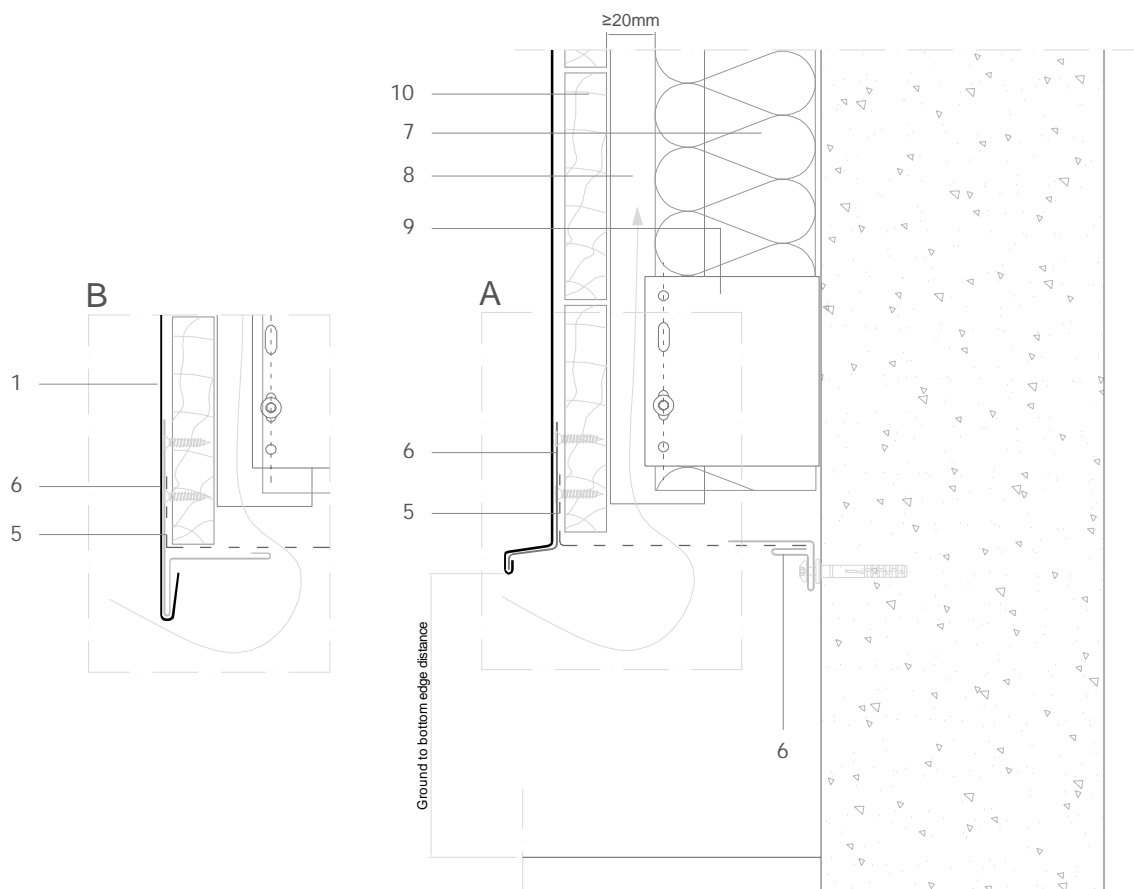


ASS H 3.1.01 Ground level foot.



All dimensions are indicative unless specified on the drawing
Sheet thickness may be exaggerated for clarity

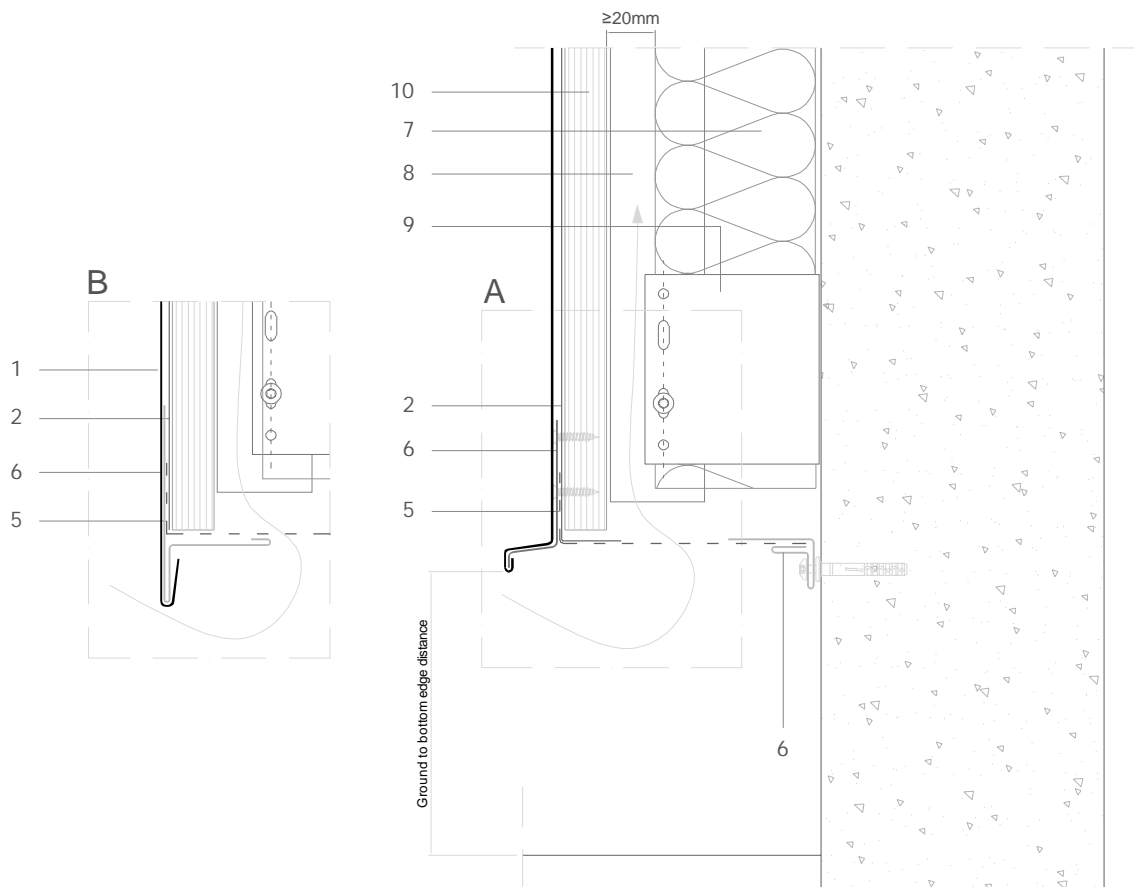
Scale 1/4

Notes:

- 'A' shows foot of cladding finished with an angle standing seam. It is recommended to stiffen the seam with a 1mm continuous galvanized fixing strip.
- 'B' shows foot of cladding finished with a flat lock joint.
- In absence of local or national regulations, a gap of 150mm is recommended between the ground and the bottom edge of the cladding.
- Generic structural details are given for indicative purposes only.

1. elZinc® cladding
2. Membrane
3. Structural underlay
4. Folded galvanised steel profiles
5. elZinc® perforated sheet
6. elZinc® retention profile
7. Insulation
8. Wooden batten
9. Wall bracket
10. Substrate

ASS H 3.1.01 Ground level foot.



All dimensions are indicative unless specified on the drawing
Sheet thickness may be exaggerated for clarity

Scale 1/4

Notes:

- 'A' shows foot of cladding finished with an angle standing seam. It is recommended to stiffen the seam with a 1mm continuous galvanised fixing strip.
- 'B' shows foot of cladding finished with a flat lock joint.
- In absence of local or national regulations, a gap of 150mm is recommended between the ground and the bottom edge of the cladding.
- Generic structural details are given for indicative purposes only.

1. elZinc® cladding
2. Membrane
3. Structural underlay
4. Folded galvanised steel profiles
5. elZinc® perforated sheet
6. elZinc® retention profile
7. Insulation
8. Wooden batten
9. Wall bracket
10. Substrate