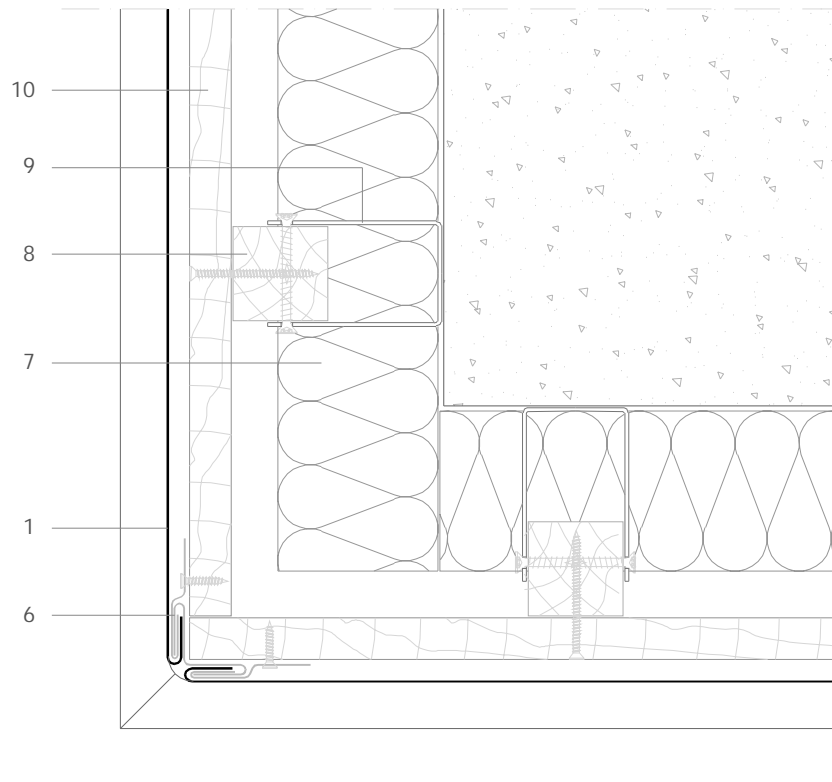


ASS H 5.1.03 Continuous seam external corner.



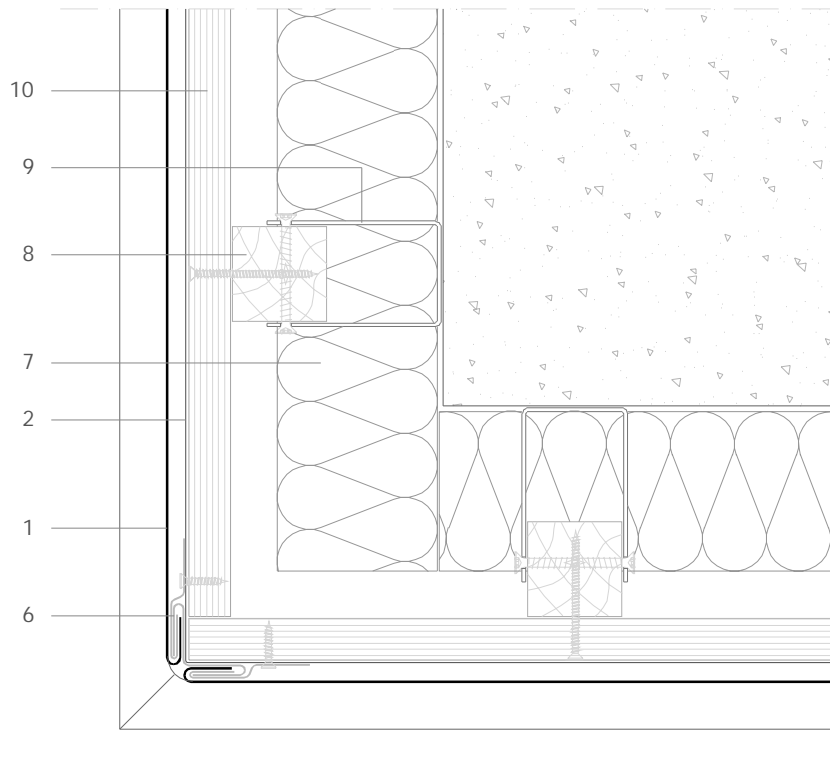
All dimensions are indicative unless specified on the drawing
Sheet thickness may be exaggerated for clarity

Scale 1/4

Notes:

- This technique gives a very clean corner detail, but the edges of the angle seam at the corner are quite sharp. This should be borne in mind when choosing this detail for corners at ground level.
 - Similar in concept to the continuous seam internal corner ASS H 5.2.03.
 - Generic structural details are given for indicative purposes only.
1. elZinc® cladding
 2. Membrane
 3. Structural underlay
 4. Folded galvanised steel profiles
 5. elZinc® perforated sheet
 6. elZinc® retention profile
 7. Insulation
 8. Wooden batten
 9. Wall bracket
 10. Substrate

ASS H 5.1.03 Continuous seam external corner.



All dimensions are indicative unless specified on the drawing
Sheet thickness may be exaggerated for clarity

Scale 1/4

Notes:

- This technique gives a very clean corner detail, but the edges of the angle seam at the corner are quite sharp. This should be borne in mind when choosing this detail for corners at ground level.
- Similar in concept to the continuous seam internal corner ASS H 5.2.03.
- Generic structural details are given for indicative purposes only.

1. elZinc® cladding
2. Membrane
3. Structural underlay
4. Folded galvanised steel profiles
5. elZinc® perforated sheet
6. elZinc® retention profile
7. Insulation
8. Wooden batten
9. Wall bracket
10. Substrate