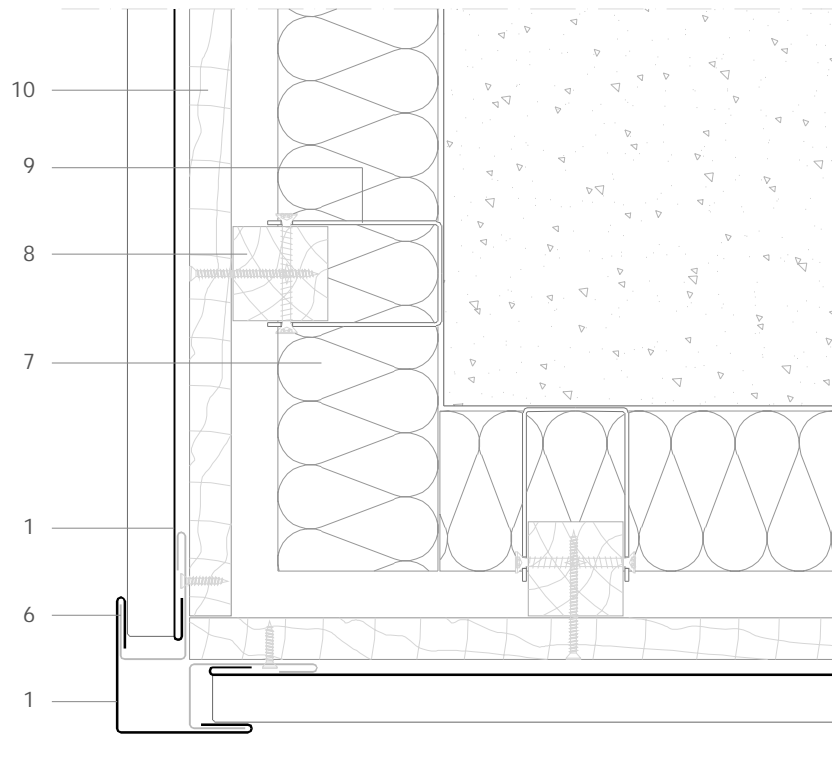


ASS H 5.1.02 Capped external corner.



All dimensions are indicative unless specified on the drawing  
Sheet thickness may be exaggerated for clarity

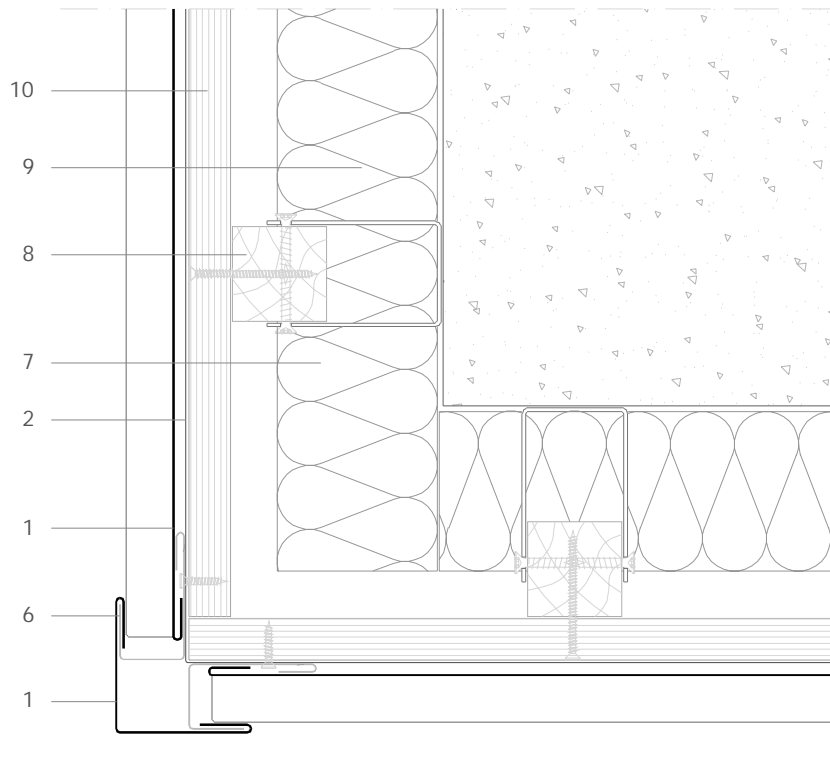
Scale 1/4

Notes:

- The faces of the corner capping can be adjusted to tie in visually with other elements of the cladding, such as the front face of the wall capping.
- The corner capping protects the seam ends making it suitable for ground level corners in public places. The capping can be reinforced using galvanised material if required.
- Similar in concept to the capped internal corner ASS H 5.2.02.
- Generic structural details are given for indicative purposes only.

1. elZinc® cladding
2. Membrane
3. Structural underlay
4. Folded galvanised steel profiles
5. elZinc® perforated sheet
6. elZinc® retention profile
7. Insulation
8. Wooden batten
9. Wall bracket
10. Substrate

ASS H 5.1.02 Capped external corner.



All dimensions are indicative unless specified on the drawing  
Sheet thickness may be exaggerated for clarity

Scale 1/4

Notes:

- The faces of the corner capping can be adjusted to tie in visually with other elements of the cladding, such as the front face of the wall capping.
- The corner capping protects the seam ends making it suitable for ground level corners in public places. The capping can be reinforced using galvanised material if required.
- Similar in concept to the capped internal corner ASS H 5.2.02.
- Generic structural details are given for indicative purposes only.

1. elZinc® cladding
2. Membrane
3. Structural underlay
4. Folded galvanised steel profiles
5. elZinc® perforated sheet
6. elZinc® retention profile
7. Insulation
8. Wooden battens
9. Wall bracket
10. Substrate