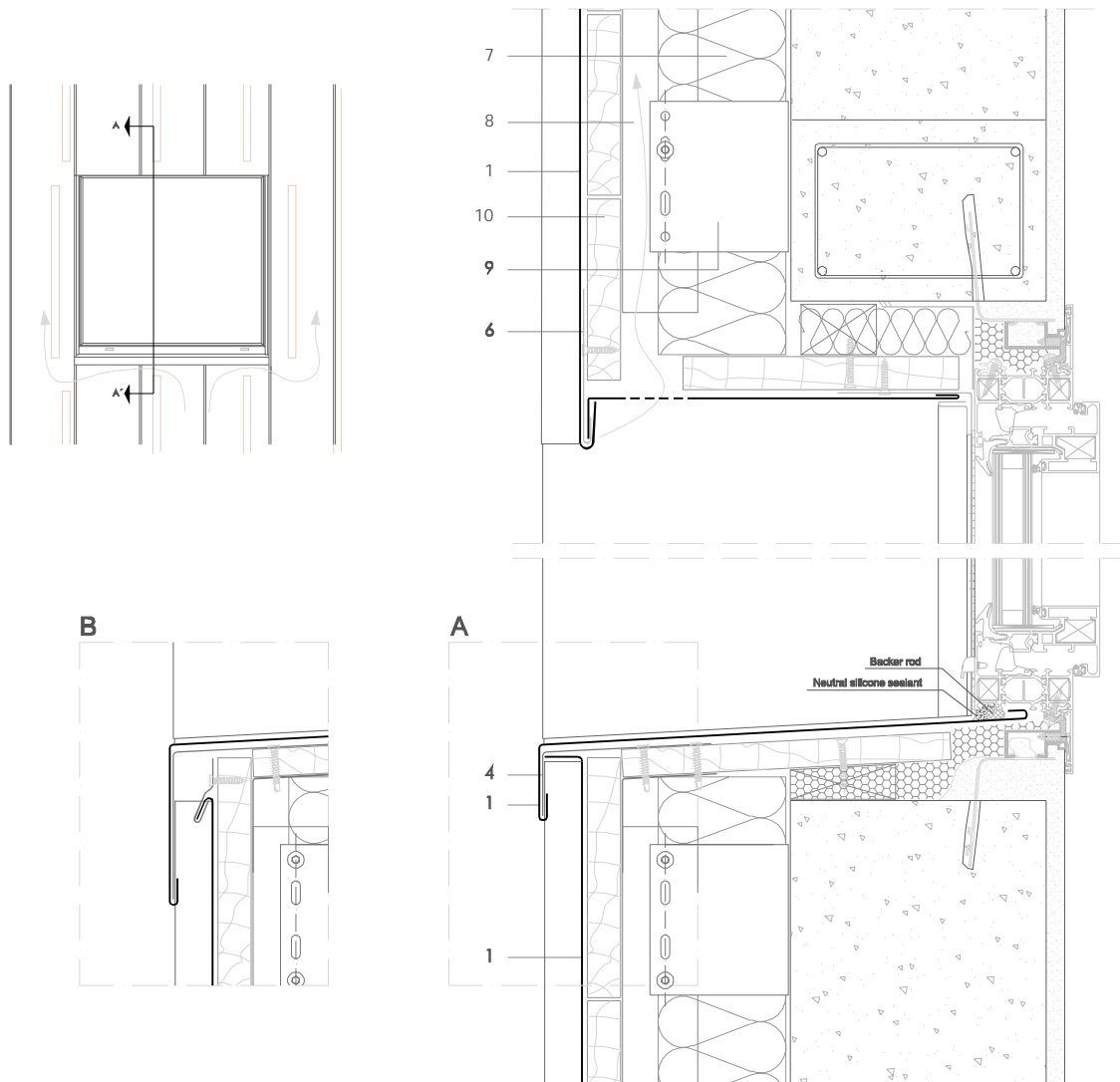


ASS V 7.2.01 Vertical window section - non-vented sill.



All dimensions are indicative unless specified on the drawing
Sheet thickness may be exaggerated for clarity

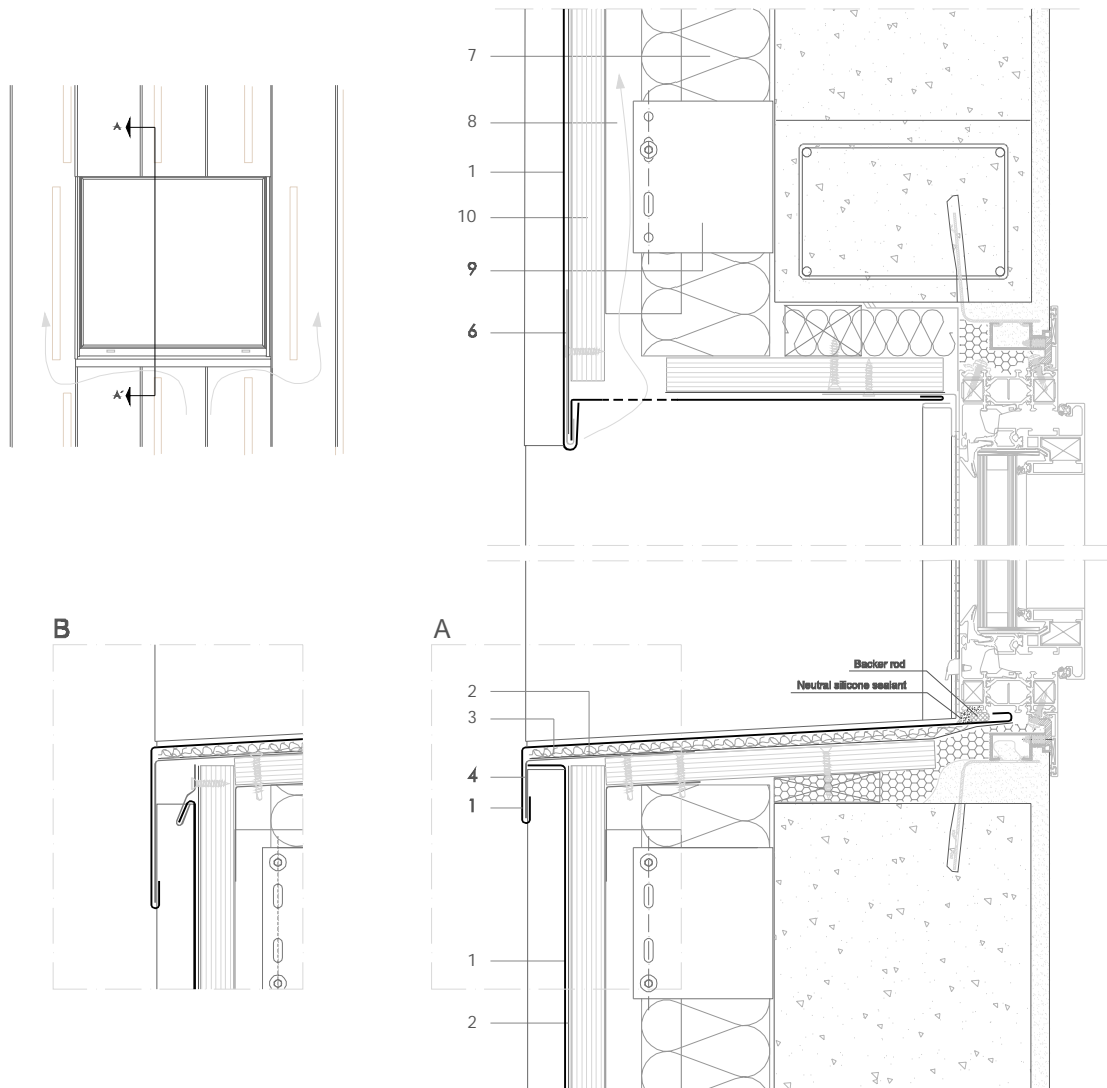
Scale 1/5

Notes:

- Used for narrow windows where ventilation can flow around window. For wide windows with a vented sill, see ASS V 7.1.01. y ASS V 7.1.02.
- The elevation corresponds to windows lined up with vertical joints.
- For horizontal section see ASS V 7.2.02.
- 'A' with sheet cladding, 'B' with long strip cladding. It is recommended to overlap the cladding with the sill by a minimum of 60mm.
- Generic structural details are given for indicative purposes only.
- Window sections reproduced courtesy of Technal.

1. elZinc® cladding
2. Membrane
3. Structural underlay
4. Folded galvanised steel profiles
5. elZinc® perforated sheet
6. elZinc® retention profile
7. Insulation
8. Wooden batten
9. Wall bracket
10. Substrate

ASS V 7.2.01 Vertical window section - non-vented sill.



All dimensions are indicative unless specified on the drawing
Sheet thickness may be exaggerated for clarity

Scale 1/5

Notes:

- Used for narrow windows where ventilation can flow around window. For wide windows with a vented sill, see ASS V 7.1.01. y ASS V 7.1.02.
- The elevation corresponds to windows lined up with vertical joints.
- For horizontal section see ASS V 7.2.02.
- 'A' with sheet cladding, 'B' with long strip cladding. It is recommended to overlap the cladding with the sill by a minimum of 60mm.
- Generic structural details are given for indicative purposes only.
- Window sections reproduced courtesy of Technal.

1. elZinc® cladding
2. Membrane
3. Structural underlay
4. Folded galvanised steel profiles
5. elZinc® perforated sheet
6. elZinc® retention profile
7. Insulation
8. Wooden batten
9. Wall bracket
10. Substrate