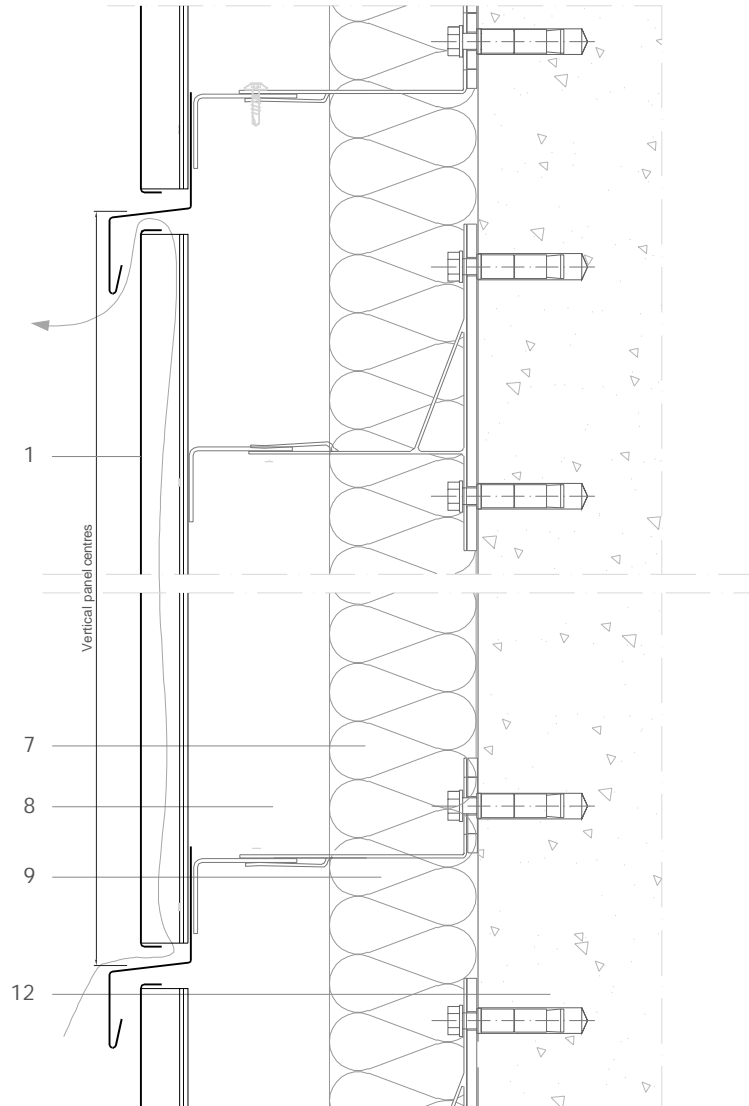


Engineered façades - Façade Panel (vertical design)

FP V 1.1.04 Vertical section.



All dimensions are indicative unless specified on the drawing  
Sheet thickness may be exaggerated for clarity

Scale 1/4

Notes:

- Consult local or national regulations to size the ventilation gap.
- The reveal width can be varied - see drawing FP V 1.1.01 and FP V 1.1.02.
- The supporting structure is shown as metal 'L' profiles on generic 'helping hand' type wall brackets. We have shown a combination of braced brackets at the top (to support the panel's weight) and unbraced brackets for the rest which allows for the vertical thermal movement of the panels. The system must be installed according to the manufacturer's instructions.
- Other types of support systems are possible, but thermal movement must be allowed for.

1. elZinc® cladding
2. elZinc® weathering strip
3. elZinc® corner profile
4. elZinc® retaining strip
5. elZinc® perforated strip / perforated panel
6. Structural underlay
7. Insulation
8. Metal rail
9. Wall bracket
10. Folded galvanised sheet
11. Membrane
12. Structure