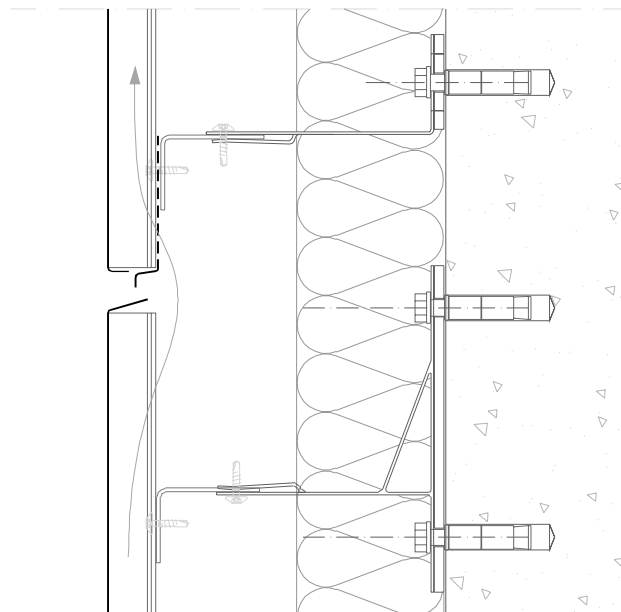


FP V 2.1.02 End to end panel joint with perforated drip edge.



All dimensions are indicative unless specified on the drawing  
Sheet thickness may be exaggerated for clarity

Scale 1/4

Notes:

- The end to end reveal width can be varied - see drawing FP V 1.1.02.
- See FP V 2.1.01 for an alternative end to end joint.
- See FP V 1.1.04 for brief notes on the supporting system.

1. elZinc® cladding
2. elZinc® weathering strip
3. elZinc® corner profile
4. elZinc® retaining strip
5. elZinc® perforated strip / perforated panel
6. Structural underlay
7. Insulation
8. Metal rail
9. Wall bracket
10. Folded galvanised sheet
11. Membrane
12. Structure

Sistema de Gestión de Calidad Certificado nº 12 100 42 851 TMS

The information contained in this document-drawing- has a purely informative function and been elaborated with the intention of assisting building professionals in regard to the installation of elZinc® cladding systems. It is the responsibility of the architect, building contractor and installer in any case to ensure the validity of the specific details employed on each project. Asla-elZinc® rejects any responsibility due to direct or indirect damage that may arise from the use of the information contained in this document

All rights reserved with regard to this document. Non authorised use will be prosecuted



elZinc®  
Tel. +34 984 116 332  
Fax. +34 985 493 202  
www.elzinc.es

Asturiana de Laminados S.A.  
Pol. Ind. de Olloniego, Parcela C1  
33660 Olloniego Asturias, Spain  
elzinc@aslzinc.com