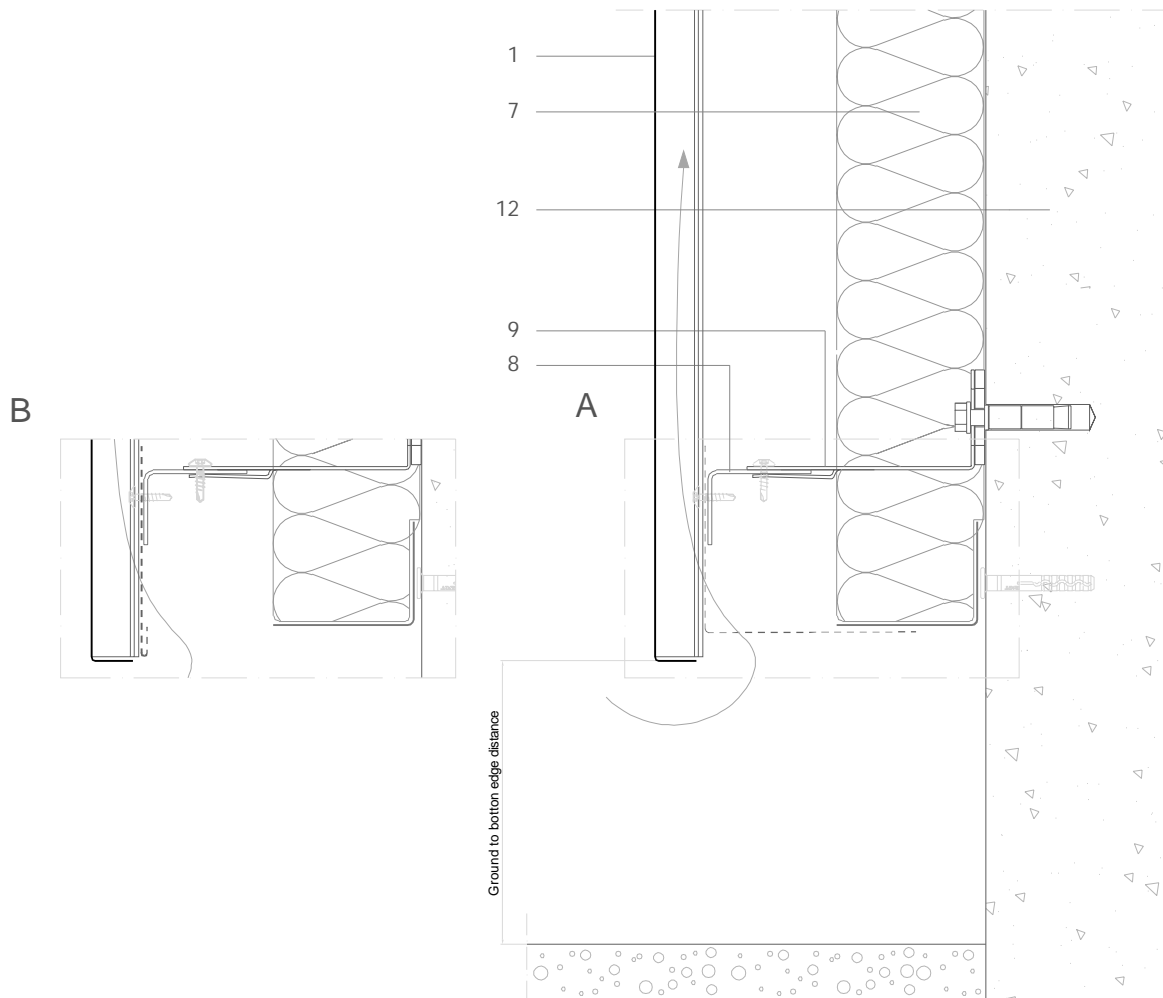


FP V 3.1.01 Cladding foot with perforated ventilating strip.



All dimensions are indicative unless specified on the drawing
Sheet thickness may be exaggerated for clarity

Scale 1/4

Notes:

- Free end finish to the foot of the façade requires careful levelling of the panels.
- 'A' closes the air gap across the bottom of the opening - recommended when the horizontal profiles may not close against the insulation.
- 'B' closes the gap directly behind the panel - recommended when the horizontal profiles close tight against the insulation.
- Generic structural details given for indicative purposes only.

1. elZinc® cladding
2. elZinc® weathering strip
3. elZinc® corner profile
4. elZinc® retaining strip
5. elZinc® perforated strip / perforated panel
6. Structural underlay
7. Insulation
8. Metal rail
9. Wall bracket
10. Folded galvanised sheet
11. Membrane
12. Structure