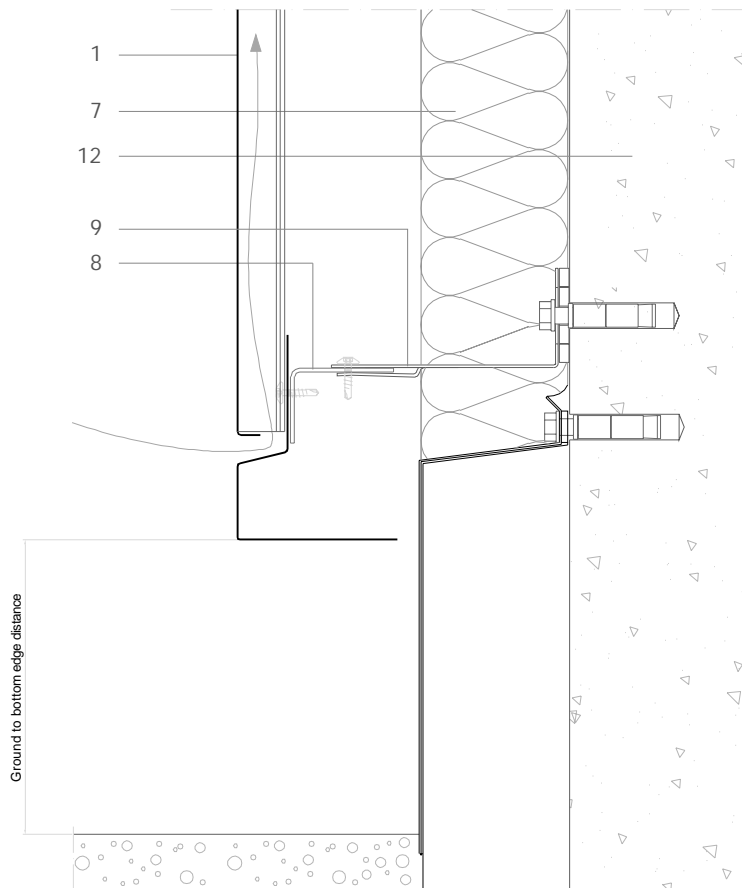


FP V 3.1.03 Cladding foot with lower flashing edge.



All dimensions are indicative unless specified on the drawing  
Sheet thickness may be exaggerated for clarity

Scale 1/4

Notes:

- The front face of the cladding foot flashing can be sized to match other parts of the façade such as corners and cappings.
- The lower fold of the bottom panel is reduced from 20mm to 10mm to allow air to enter the ventilation gap.
- Generic structural details given for indicative purposes only.

1. elZinc® cladding
2. elZinc® weathering strip
3. elZinc® corner profile
4. elZinc® retaining strip
5. elZinc® perforated strip / perforated panel
6. Structural underlay
7. Insulation
8. Metal rail
9. Wall bracket
10. Folded galvanised sheet
11. Membrane
12. Structure