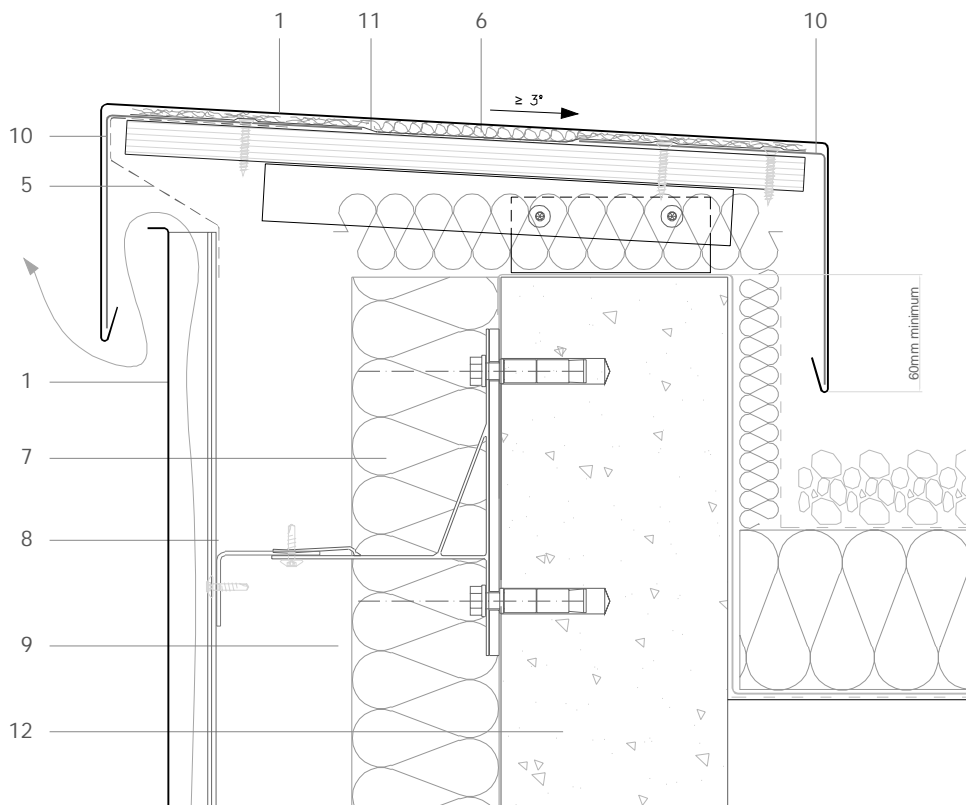


FP V 4.1.02 Cladding head vented at front - overlapping coping.



All dimensions are indicative unless specified on the drawing
Sheet thickness may be exaggerated for clarity

Scale 1/4

Notes:

- Provides greater weather protection than FP V 4.1.01, making it suitable for exposed conditions.
- See FP V 4.1.03 for rear vented alternative.
- Wall capping front face can be sized to match other elements of the façade such as corner pieces, window surrounds etc.
- Generic structural details given for indicative purposes only.

1. elZinc® cladding
2. elZinc® weathering strip
3. elZinc® corner profile
4. elZinc® retaining strip
5. elZinc® perforated strip / perforated panel
6. Structural underlay
7. Insulation
8. Metal rail
9. Wall bracket
10. Folded galvanised sheet
11. Membrane
12. Structure

Sistema de Gestión de Calidad Certificado nº 12 100 42 851 TMS

The information contained in this document-drawing has a purely informative function and been elaborated with the intention of assisting building professionals in regard to the installation of elZinc® cladding systems. It is the responsibility of the architect, building contractor and installer in any case to ensure the validity of the specific details employed on each project. Asla-elZinc® rejects any responsibility due to direct or indirect damage that may arise from the use of the information contained in this document

All rights reserved with regard to this document. Non authorised use will be prosecuted



elZinc®
Tel. +34 984 116 332
Fax. +34 985 493 202
www.elzinc.es

Asturiana de Laminados S.A.
Pol. Ind. de Olloniego, Parcela C1
33660 Olloniego Asturias, Spain
elzinc@aslzinc.com