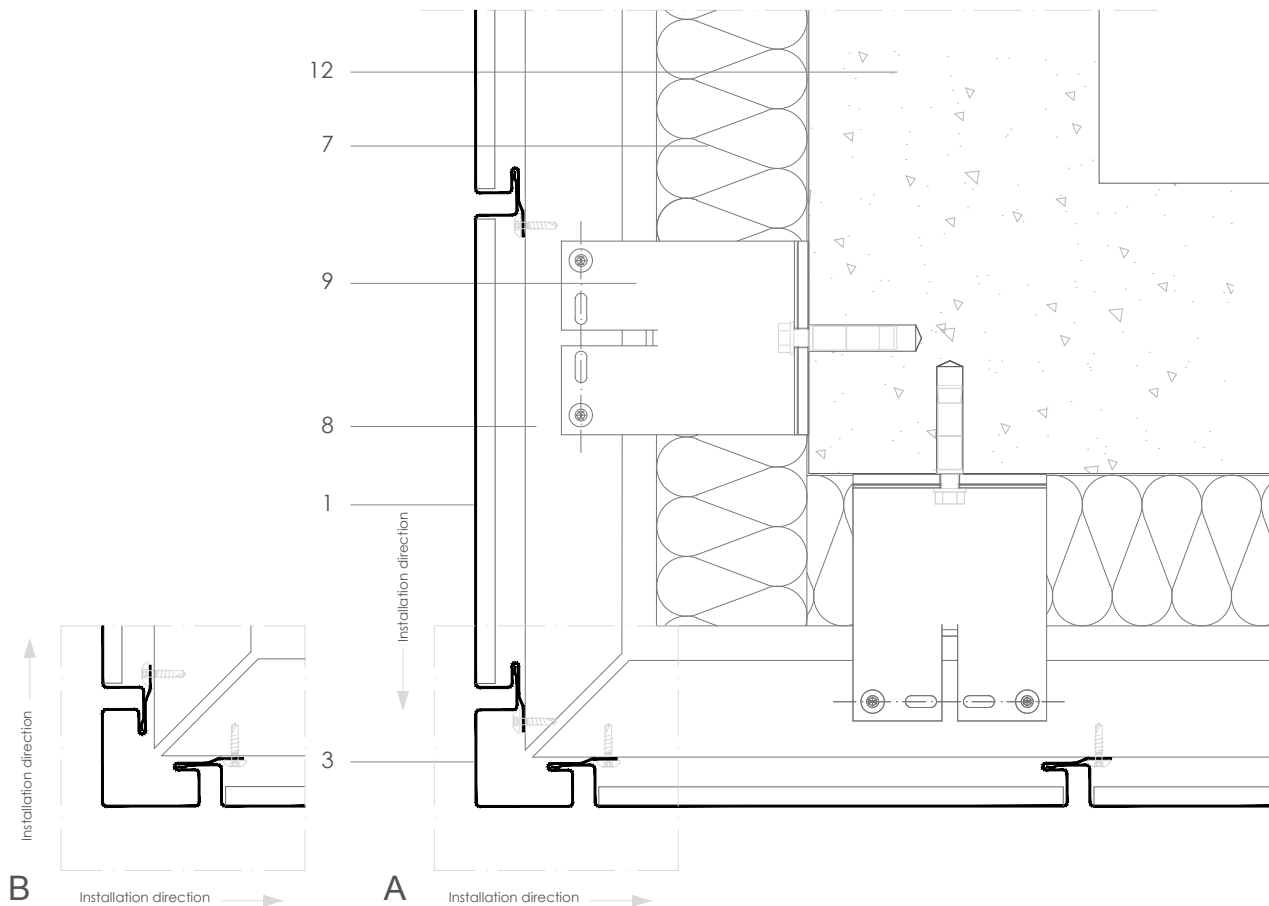


FP V 5.1.01 Outside corner - square corner weathering strip.



Scale 1/4

All dimensions are indicative unless specified on the drawing
Sheet thickness may be exaggerated for clarity

Notes:

- 'A' shows cladding installation direction continuing around the corner.
- 'B' shows cladding installation starting at the corner.
- Corner faces can be sized to match other elements of the façade such as wall capping, window surrounds etc.
- A galvanized steel backer can be installed behind the zinc corner piece to provide additional impact resistance if required.
- See FP V 5.2.01 for matching internal corner detail, and FP V 6.1.01 for matching abutment detail.
- For outside corner using a full size corner panel see FP V 5.1.02.

1. elZinc® cladding
2. elZinc® weathering strip
3. elZinc® corner profile
4. elZinc® retaining strip
5. elZinc® perforated strip / perforated panel
6. Structural underlay
7. Insulation
8. Metal rail
9. Wall bracket
10. Folded galvanised sheet
11. Membrane
12. Structure