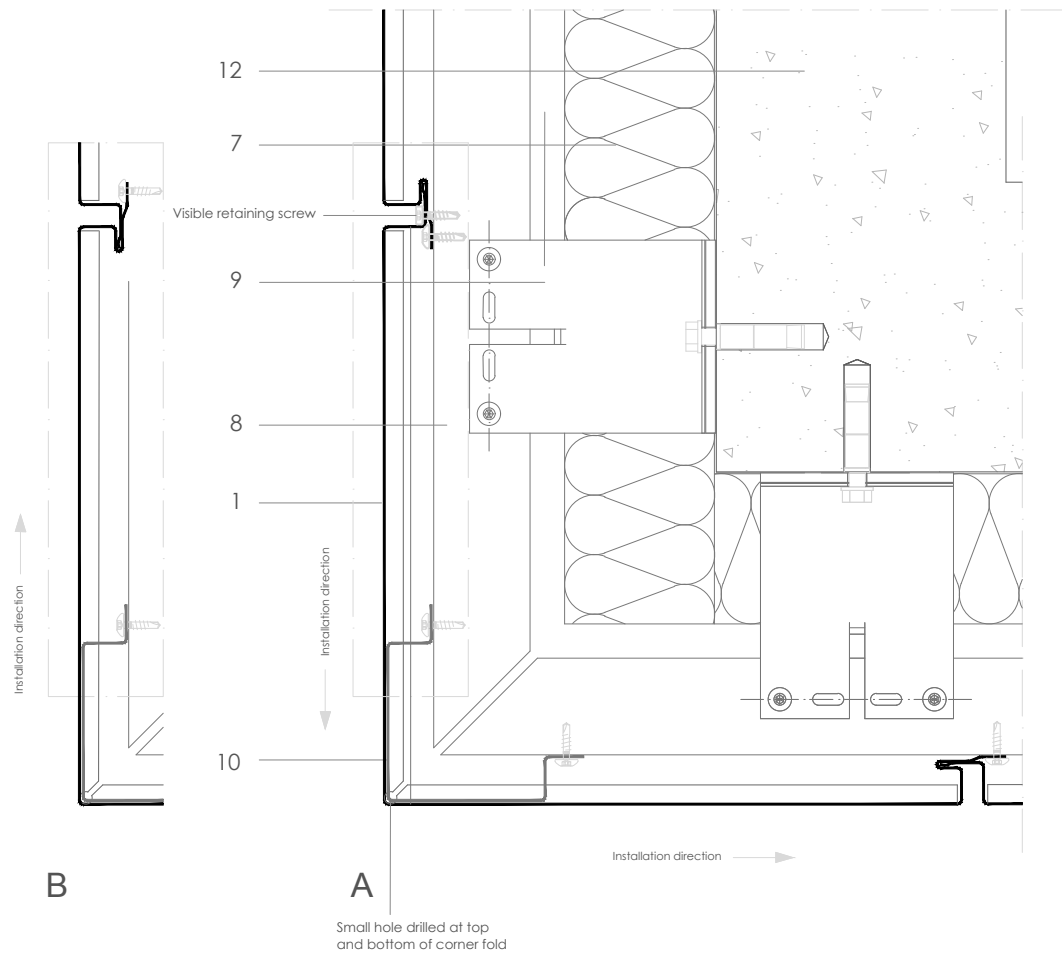


FP V 5.1.02 Outside corner - corner panel.



Scale 1/4

All dimensions are indicative unless specified on the drawing  
Sheet thickness may be exaggerated for clarity

Notes:

- 'A' shows cladding installation direction continuing around the corner. Visible retaining screws are recommended to properly secure the corner panel.
- 'B' shows cladding installation starting at the corner.
- See FP V 5.2.01 for matching internal corner detail, and FP V 6.1.02 for matching abutment detail.
- For outside corner using a corner flashing piece, see FP V 5.1.01.

1. elZinc® cladding
2. elZinc® weathering strip
3. elZinc® corner profile
4. elZinc® retaining strip
5. elZinc® perforated strip / perforated panel
6. Structural underlay
7. Insulation
8. Metal rail
9. Wall bracket
10. Folded galvanised sheet
11. Membrane
12. Structure