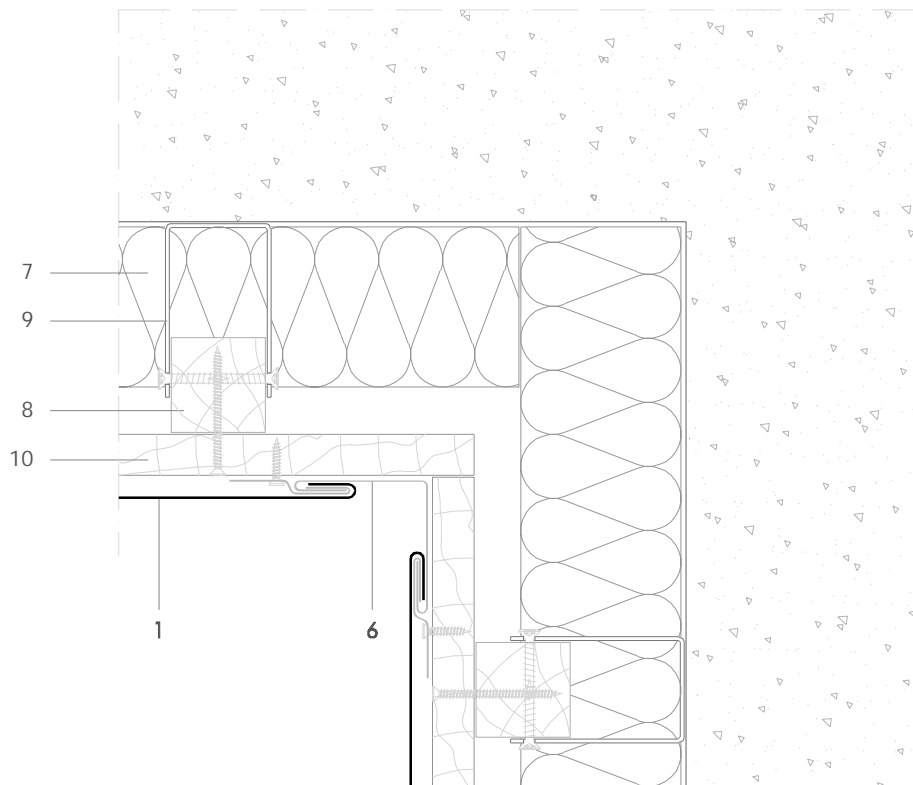


FL 5.2.01 Reverse internal corner.



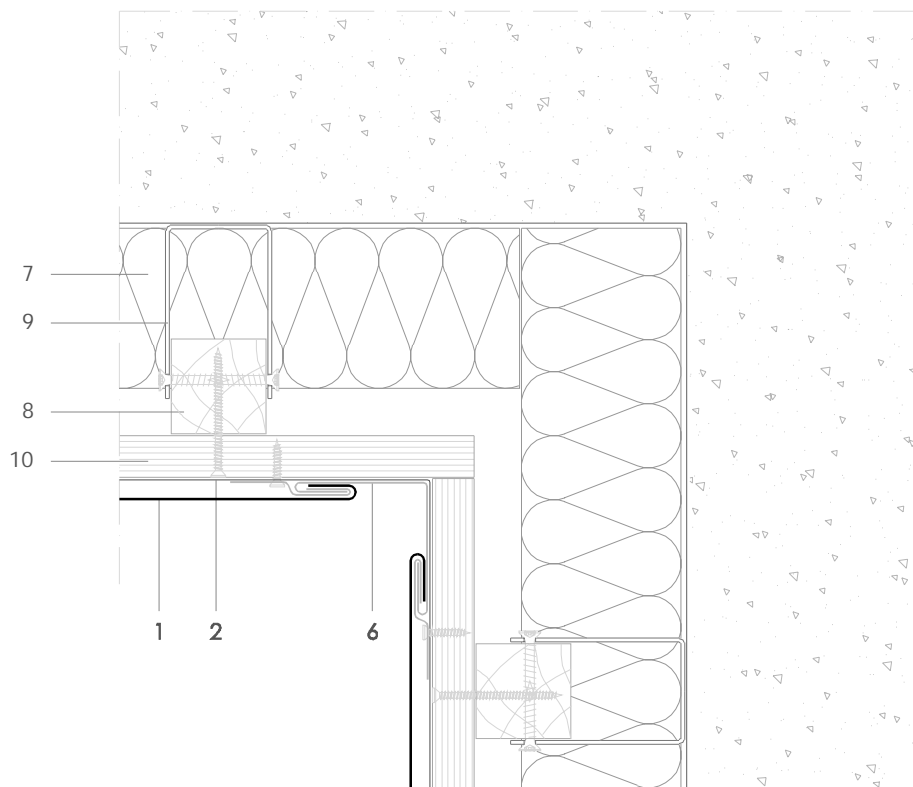
All dimensions are indicative unless specified on the drawing
Sheet thickness may be exaggerated for clarity

Scale 1/4

Notes:

- Similar in concept to external corner FL 5.1.01.
 - The face widths of the corner weathering strip can be adjusted to tie in with other elements of the façade, such as the front face of the wall coping.
 - Generic structural details are given for indicative purposes only.
1. elZinc® cladding
 2. Membrane
 3. Structural underlay
 4. Folded galvanised steel profiles
 5. elZinc® perforated sheet
 6. elZinc® retention profile
 7. Insulation
 8. Wooden batten
 9. Wall bracket
 10. Substrate

FL 5.2.01 Reverse internal corner.



All dimensions are indicative unless specified on the drawing
Sheet thickness may be exaggerated for clarity

Scale 1/4

Notes:

- Similar in concept to internal corner FL 5.1.01.
- The face widths of the corner capping can be adjusted to tie in with other elements of the façade, such as the front face of the wall coping.
- Generic structural details are given for indicative purposes only.

1. elZinc® cladding
2. Membrane
3. Structural underlay
4. Folded galvanised steel profiles
5. elZinc® perforated sheet
6. elZinc® retention profile
7. Insulation
8. Wooden batten
9. Wall bracket
10. Substrate