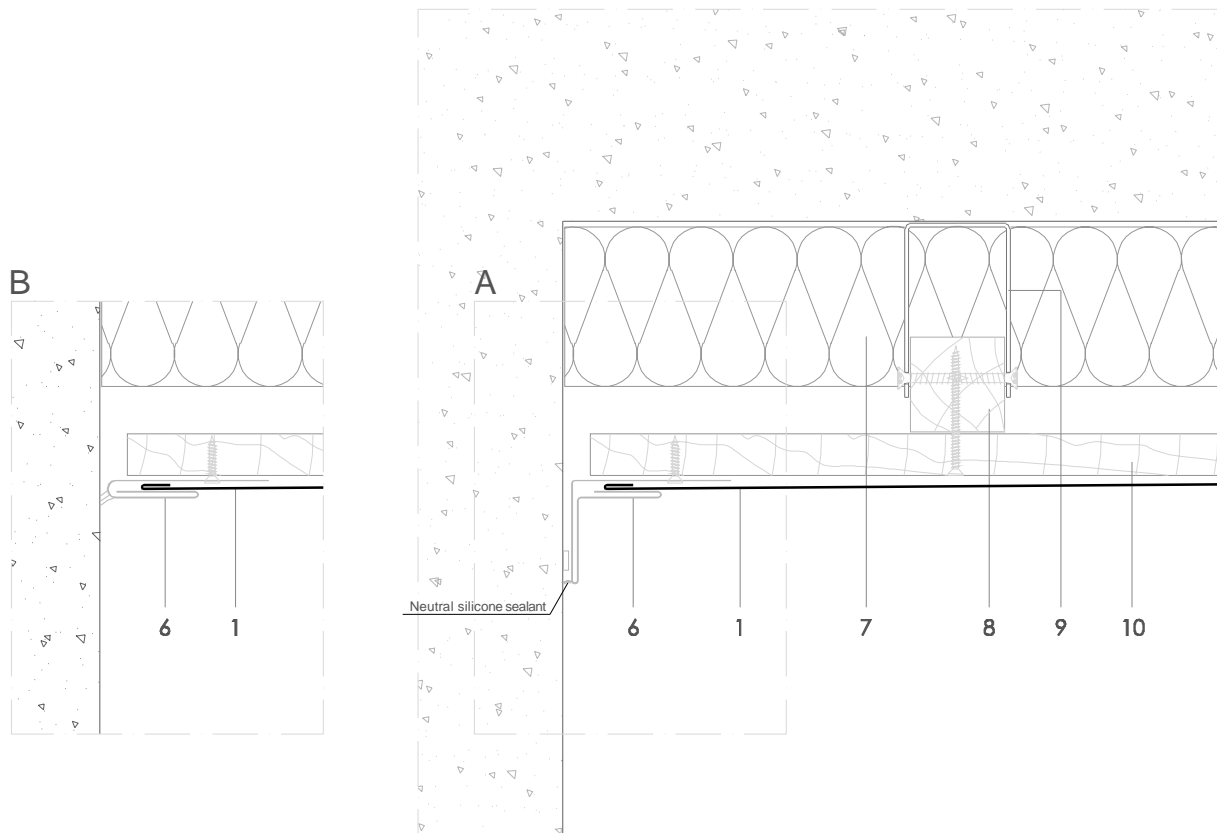


FL 6.1.02 Receiving strip abutment.



All dimensions are indicative unless specified on the drawing  
Sheet thickness may be exaggerated for clarity

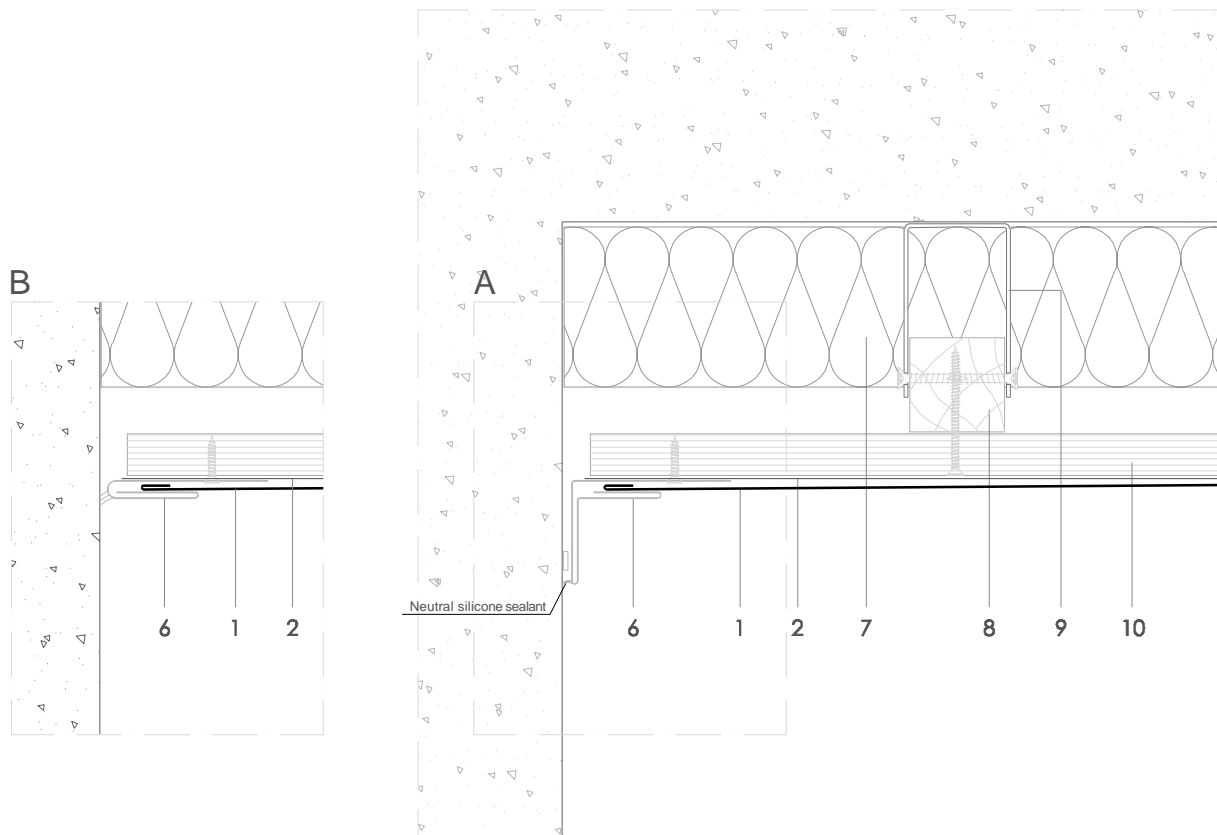
Scale 1/4

Notes:

- 'A' and 'B' are visual alternatives.
- Similar in concept to external corner 5.1.02 internal corner FL 5.2.02.
- Generic structural details are given for indicative purposes only.

1. elZinc® cladding
2. Membrane
3. Structural underlay
4. Folded galvanised steel profiles
5. elZinc® perforated sheet
6. elZinc® retention profile
7. Insulation
8. Wooden batten
9. Wall bracket
10. Substrate

FL 6.1.02 Receiving strip abutment.



Scale 1/4

All dimensions are indicative unless specified on the drawing  
Sheet thickness may be exaggerated for clarity

Notes:

- 'A' and 'B' are visual alternatives.
- Similar in concept to external corner 5.1.02 internal corner FL 5.2.02.
- Generic structural details are given for indicative purposes only.

1. elZinc® cladding
2. Membrane
3. Structural underlay
4. Folded galvanised steel profiles
5. elZinc® perforated sheet
6. elZinc® retention profile
7. Insulation
8. Wooden batten
9. Wall bracket
10. Substrate