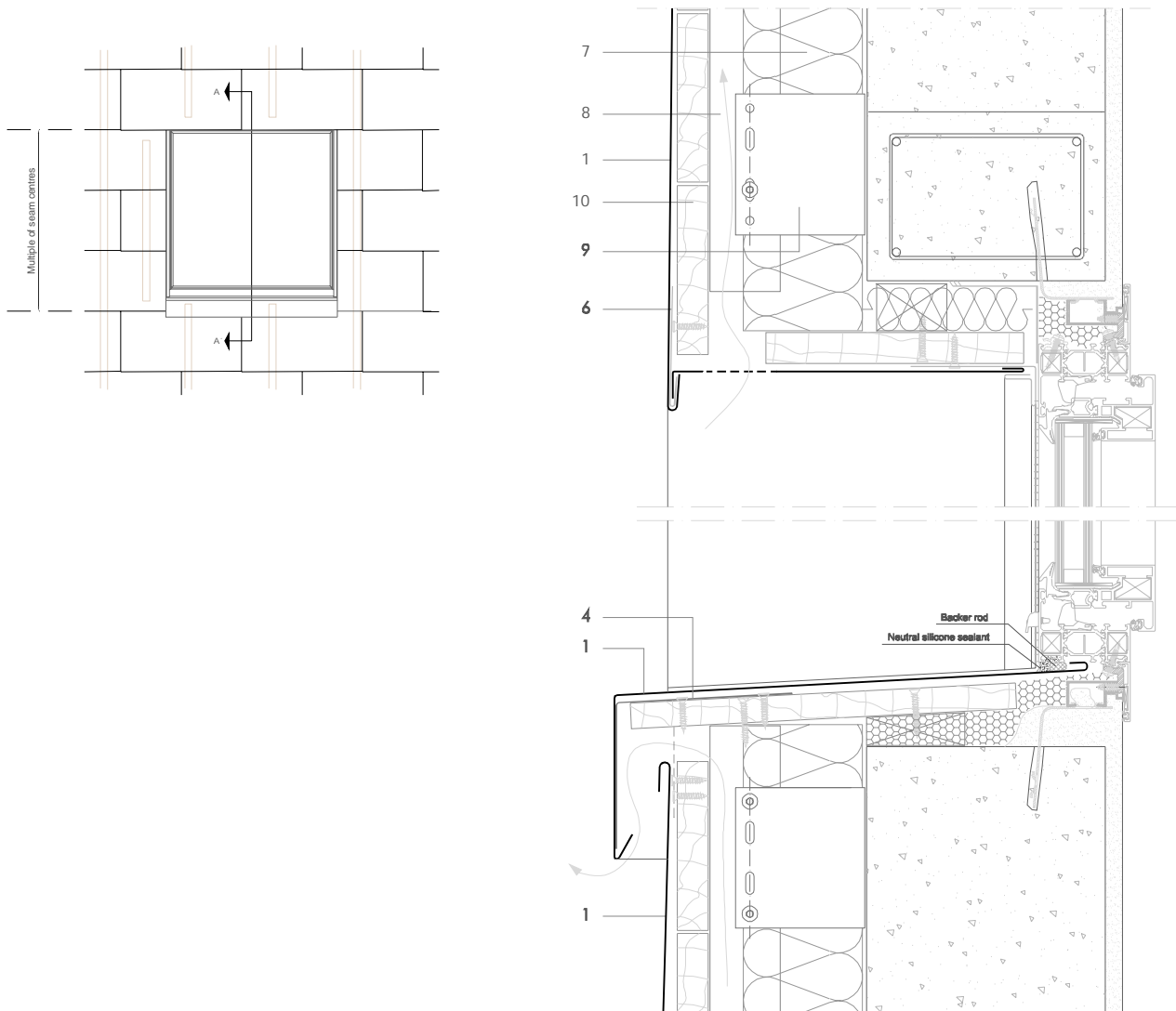


FL 7.1.01 Vertical window section (Vented sill).



All dimensions are indicative unless specified on the drawing  
Sheet thickness may be exaggerated for clarity

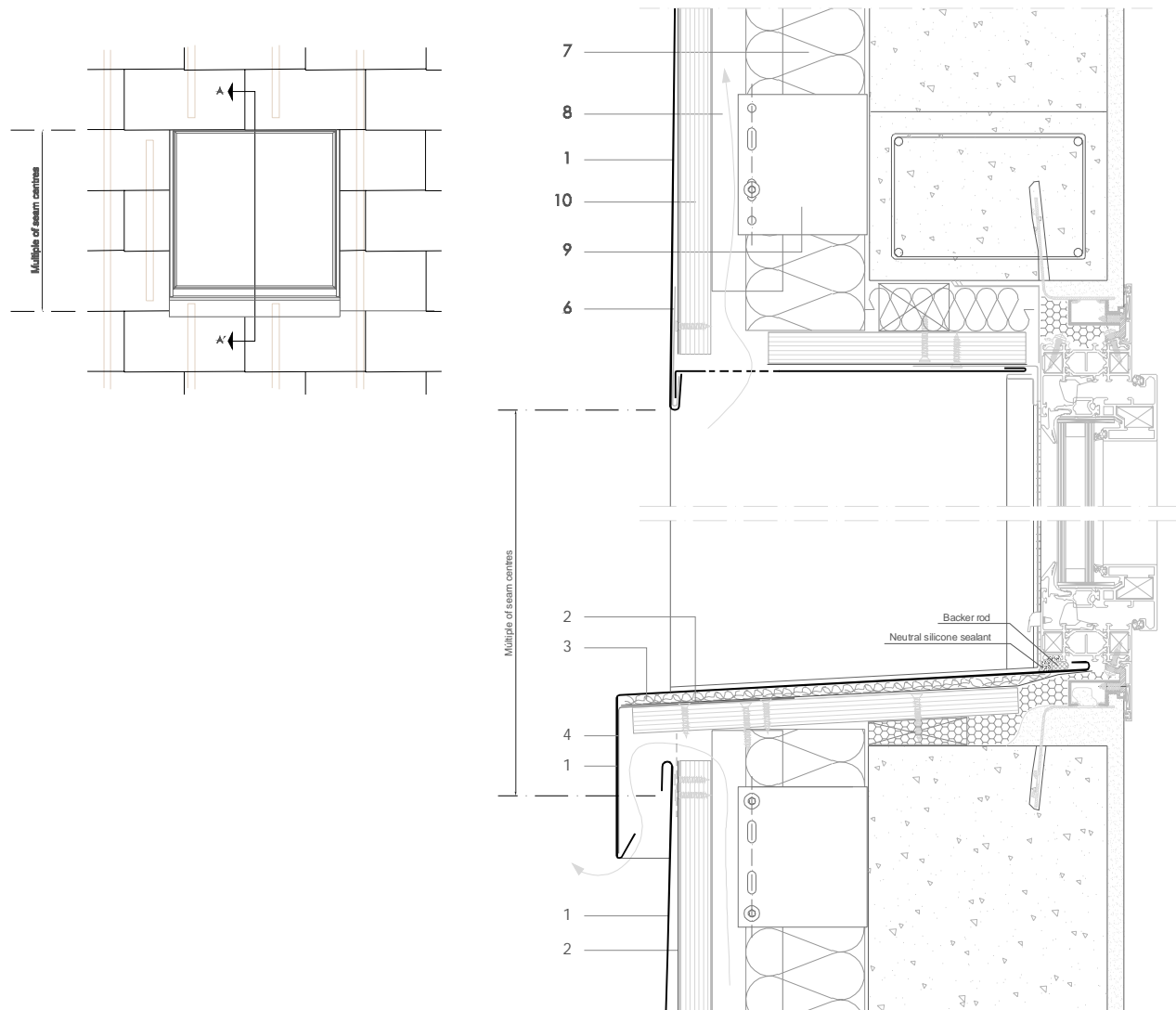
Scale 1/5

Notes:

- Used for wide windows with a vented sill. For narrow windows with an un-vented sill, see FL 7.2.01. y FL 7.2.02.
- The elevation corresponds to windows lined up with horizontal joints.
- For horizontal section see FL 7.1.02.
- It is recommended to overlap the cladding with the sill by a minimum of 60mm.
- Generic structural details are given for indicative purposes only.
- Window sections reproduced courtesy of Technal.

1. elZinc® cladding
2. Membrane
3. Structural underlay
4. Folded galvanised steel profiles
5. elZinc® perforated sheet
6. elZinc® retention profile
7. Insulation
8. Wooden batten
9. Wall bracket
10. Substrate

FL 7.1.01 Vertical window section (Vented sill).



All dimensions are indicative unless specified on the drawing  
Sheet thickness may be exaggerated for clarity

Scale 1/5

Notes:

- Used for wide windows with a vented sill. For narrow windows with an un-vented sill, see FL 7.2.01. y FL 7.2.02.
- The elevation corresponds to windows lined up with horizontal joints.
- For horizontal section see FL 7.1.02.
- It is recommended to overlap the cladding with the sill by a minimum of 60mm.
- Generic structural details are given for indicative purposes only.
- Window sections reproduced courtesy of Technal.

1. elZinc® cladding
2. Membrane
3. Structural underlay
4. Folded galvanised steel profiles
5. elZinc® perforated sheet
6. elZinc® retention profile
7. Insulation
8. Wooden batten
9. Wall bracket
10. Substrate