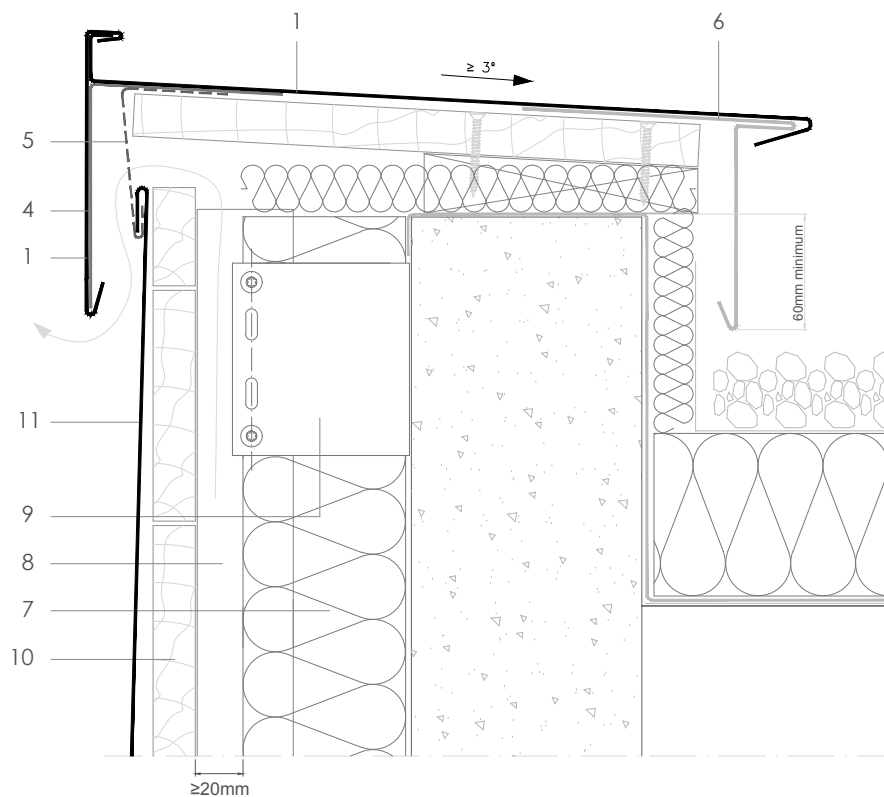


Traditional systems - Diamond Tile

T D 4.1.02 Front vented split capping - rear 'T' plate.



Scale 1/4

All dimensions are indicative unless specified on the drawing
Sheet thickness may be exaggerated for clarity

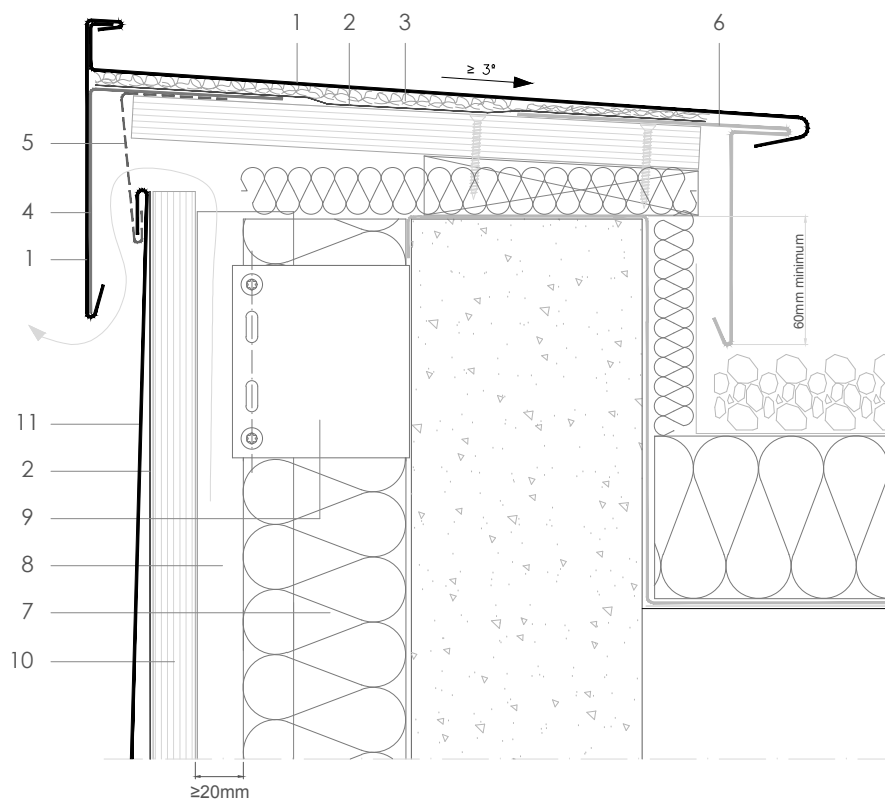
Notes:

- 'A' shows the tiles in the top row when they are left uncut.
- 'B' shows the tiles in the top row when they are cut to size folded over and fixed through new site-drilled holes.
- Wall capping front face can be sized to match other elements of the façade such as corner pieces, window surrounds etc.
- See T D 4.1.01, 4.1.03 and 4.1.04 for alternative capping details.
- Generic structural details given for indicative purposes only.

1. elZinc® cladding
2. Membrane
3. Structural underlay
4. Folded galvanized steel profiles
5. elZinc® perforated sheet
6. elZinc® retention profile
7. Insulation
8. Wooden batten
9. Wall bracket
10. Substrate
11. elZinc® Diamond Tile

Traditional systems - Diamond Tile

T D 4.1.02 Front vented split capping - rear 'T' plate.



Scale 1/4

All dimensions are indicative unless specified on the drawing
Sheet thickness may be exaggerated for clarity

Notes:

- 'A' shows the tiles in the top row when they are left uncut.
- 'B' shows the tiles in the top row when they are cut to size folded over and fixed through new site-drilled holes.
- Wall capping front face can be sized to match other elements of the façade such as corner pieces, window surrounds etc.
- See T R 4.1.01, 4.1.03 and 4.1.04 for alternative capping details.
- Generic structural details given for indicative purposes only.

1. elZinc® cladding
2. Membrane
3. Structural underlay
4. Folded galvanised steel profiles
5. elZinc® perforated sheet
6. elZinc® retention profile
7. Insulation
8. Wooden batten
9. Wall bracket
10. Substrate
11. elZinc® Diamond Tile