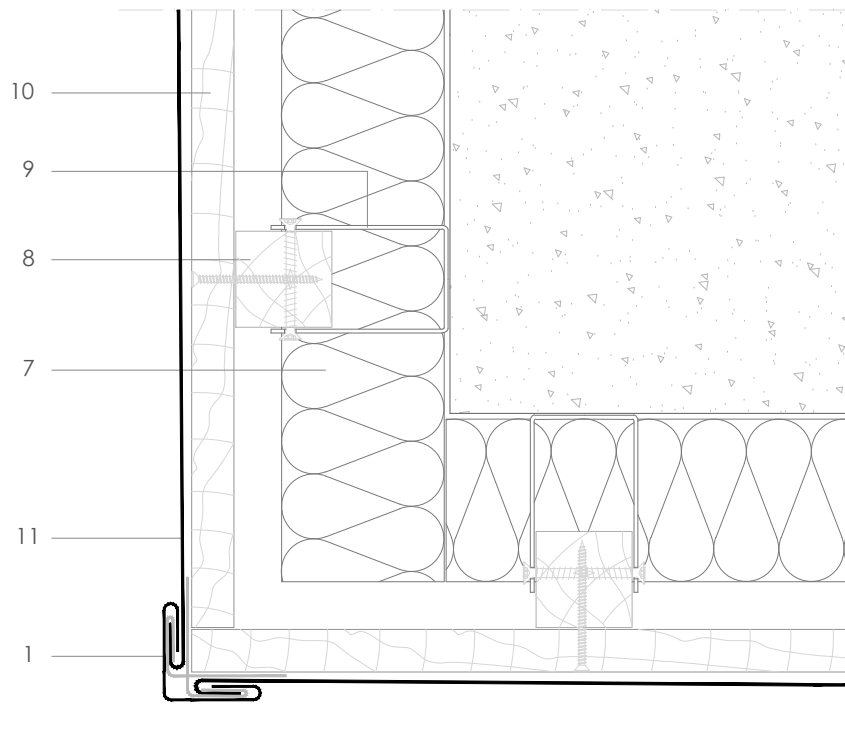


## Traditional systems - Diamond Tile

### T D 5.1.02 Capped external corner.



Scale 1/4

All dimensions are indicative unless specified on the drawing  
Sheet thickness may be exaggerated for clarity

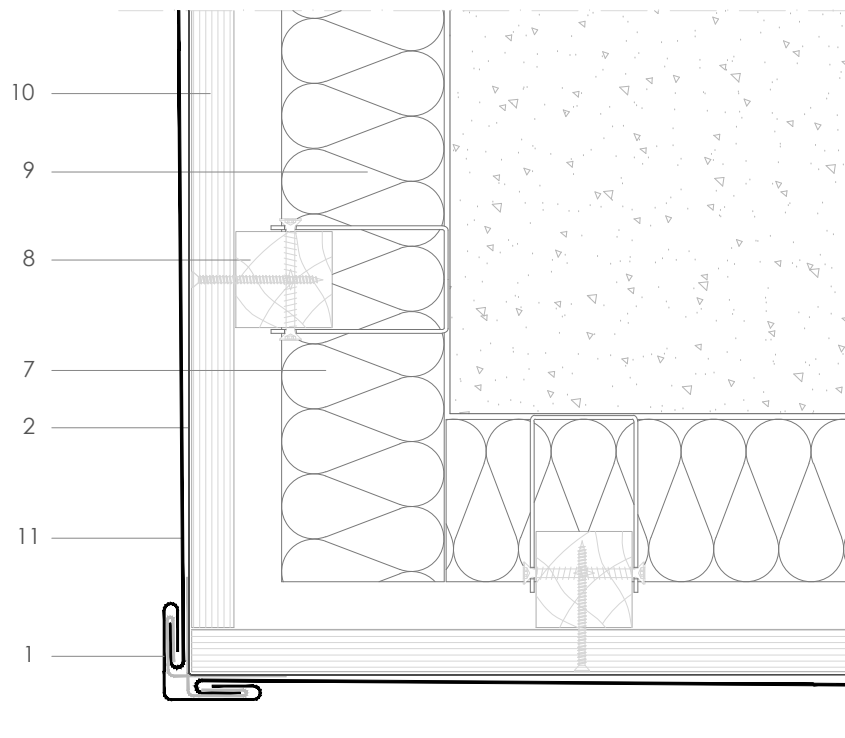
#### Notes:

- Corner piece front faces can be sized to match other elements of the façade such as wall capping, window surrounds etc.
- Similar in concept to internal corner 5.2.02 and receiving strip abutment 6.1.02 .

1. elZinc® cladding
2. Membrane
3. Structural underlay
4. Folded galvanised steel profiles
5. elZinc® perforated sheet
6. elZinc® retention profile
7. Insulation
8. Wooden batten
9. Wall bracket
10. Substrate
11. elZinc® Diamond Tile

## Traditional systems - Diamond Tile

### T D 5.1.02 Capped external corner.



Scale 1/4

All dimensions are indicative unless specified on the drawing  
Sheet thickness may be exaggerated for clarity

#### Notes:

- Corner piece front faces can be sized to match other elements of the façade such as wall capping, window surrounds etc.
- Similar in concept to internal corner 5.2.02 and receiving strip abutment 6.1.02 .

1. elZinc® cladding
2. Membrane
3. Structural underlay
4. Folded galvanised steel profiles
5. elZinc® perforated sheet
6. elZinc® retention profile
7. Insulation
8. Wooden batten
9. Wall bracket
10. Substrate
11. elZinc® Diamond Tile