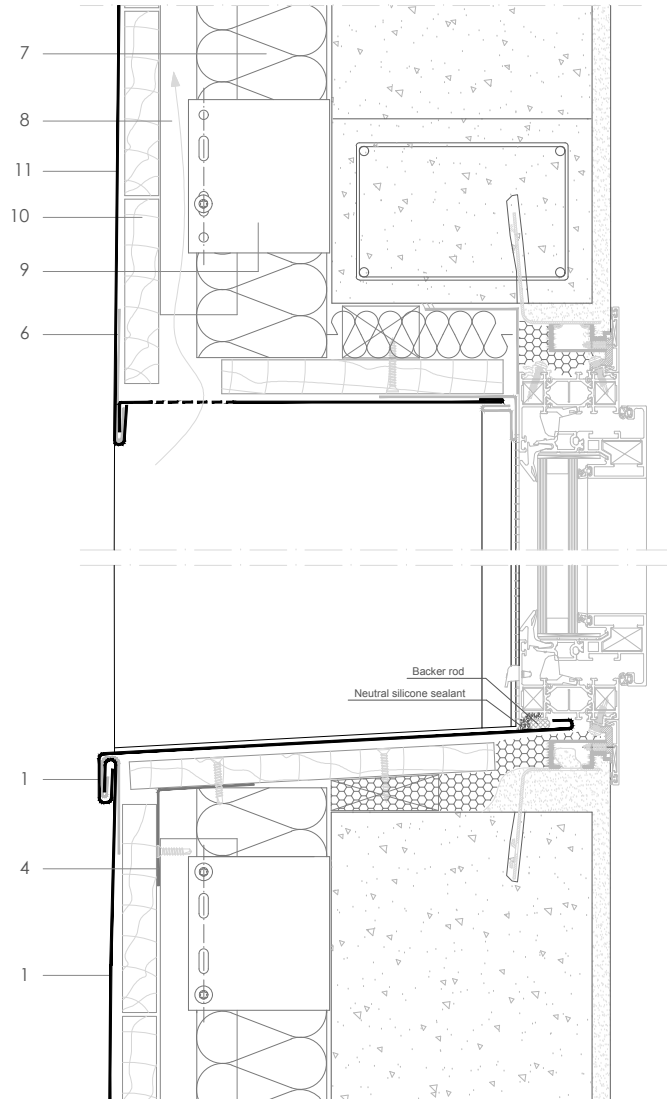
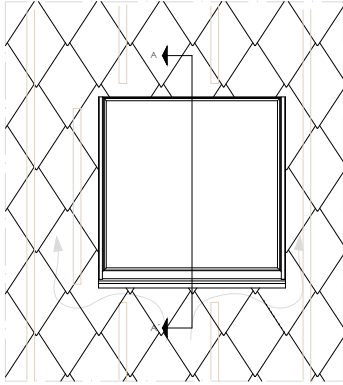


Traditional systems - Diamond Tile

T D 7.2.01 Vertical window section (Non-vented sill).



All dimensions are indicative unless specified on the drawing
Sheet thickness may be exaggerated for clarity

Scale 1/5

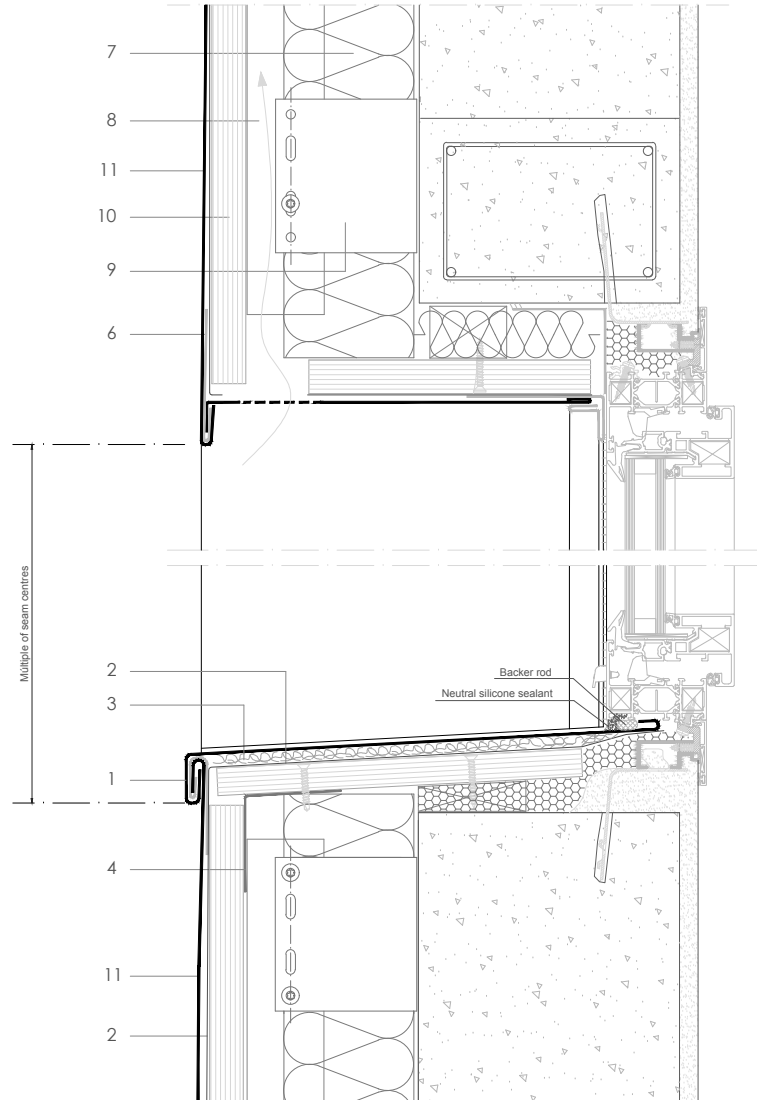
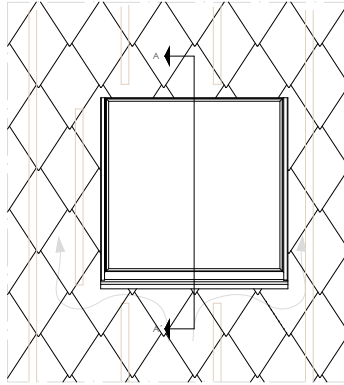
Notes:

- Used for narrow windows where ventilation can flow around the window.
For wide windows with an vented sill, see TD 7.1.01. y TD 7.1.02.
- For horizontal section see TD 7.2.02.
- Generic structural details are given for indicative purposes only.
- Window sections reproduced courtesy of Technal.

1. elZinc® cladding
2. Membrane
3. Structural underlay
4. Folded galvanised steel profiles
5. elZinc® perforated sheet
6. elZinc® retention profile
7. Insulation
8. Wooden batten
9. Wall bracket
10. Substrate
11. elZinc® Diamond Tile

Traditional systems - Diamond Tile

T D 7.2.01 Vertical window section (Non-vented sill).



All dimensions are indicative unless specified on the drawing
Sheet thickness may be exaggerated for clarity

Scale 1/5

Notes:

- Used for narrow windows where ventilation can flow around the window. For wide windows with an vented sill, see TD 7.1.01. y TD 7.1.02.
- For horizontal section see TD 7.2.02.
- Generic structural details are given for indicative purposes only.
- Window sections reproduced courtesy of Technal.

1. elZinc® cladding
2. Membrane
3. Structural underlay
4. Folded galvanised steel profiles
5. elZinc® perforated sheet
6. elZinc® retention profile
7. Insulation
8. Wooden batten
9. Wall bracket
10. Substrate
11. elZinc® Diamond Tile