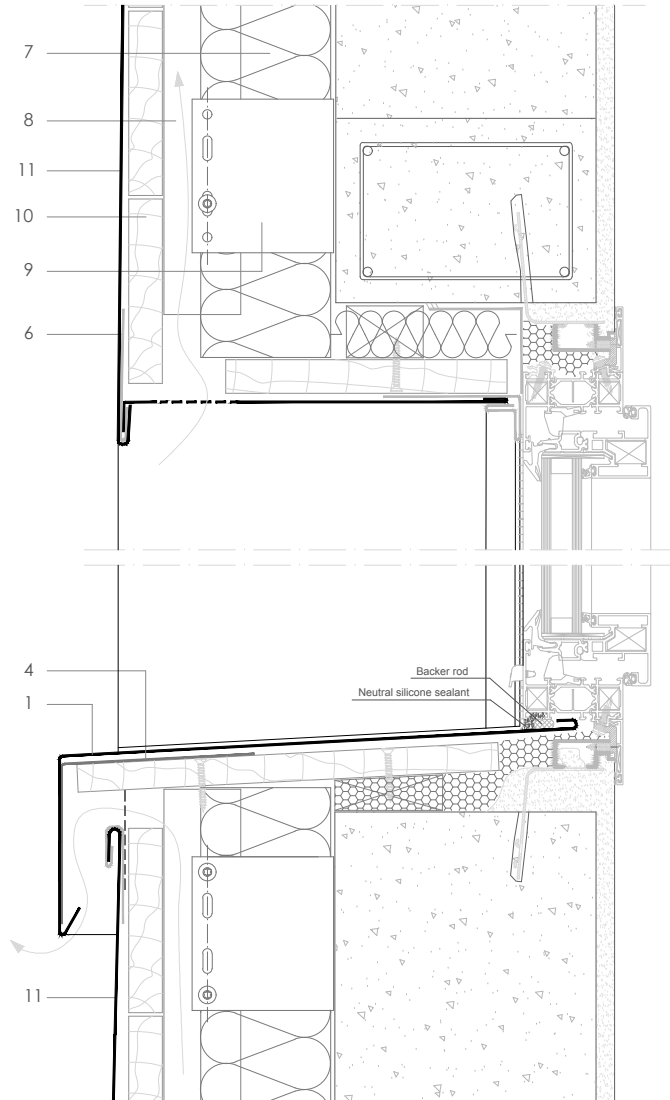
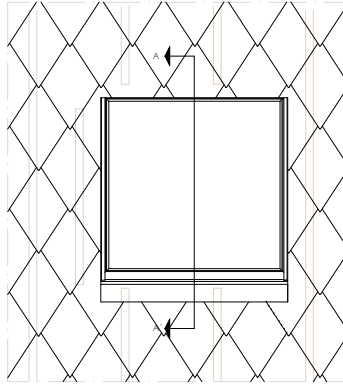


Traditional systems - Diamond Tile

T D 7.1.01 Vertical window section (Vented sill).



Scale 1/5

All dimensions are indicative unless specified on the drawing  
Sheet thickness may be exaggerated for clarity

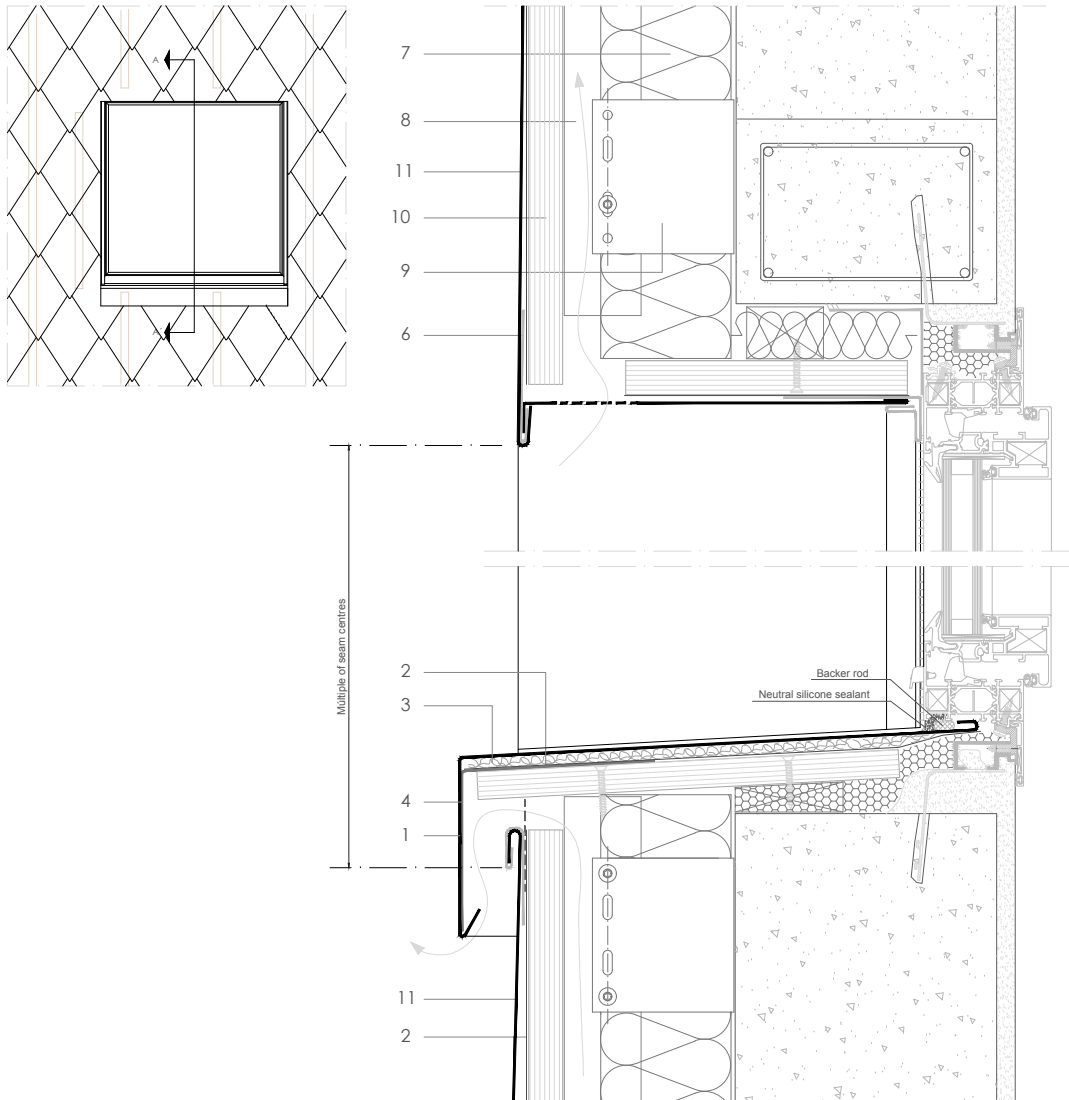
Notes:

- Used for wide windows with a vented sill. For narrow windows with an un-vented sill, see TD 7.2.01. y TD 7.2.02.
- For horizontal section see TD 7.1.02.
- It is recommended to overlap the cladding with the sill by a minimum of 60mm.
- Generic structural details are given for indicative purposes only.
- Window sections reproduced courtesy of Technal.

1. elZinc® cladding
2. Membrane
3. Structural underlay
4. Folded galvanised steel profiles
5. elZinc® perforated sheet
6. elZinc® retention profile
7. Insulation
8. Wooden batten
9. Wall bracket
10. Substrate
11. elZinc® Diamond Tile

## Traditional systems - Diamond Tile

### TD 7.1.01 Vertical window section (Vented sill).



All dimensions are indicative unless specified on the drawing  
Sheet thickness may be exaggerated for clarity

Scale 1/5

#### Notes:

- Used for wide windows with a vented sill. For narrow windows with an un-vented sill, see TD 7.2.01. y TD 7.2.02.
- For horizontal section see TD 7.1.02.
- It is recommended to overlap the cladding with the sill by a minimum of 60mm.
- Generic structural details are given for indicative purposes only.
- Window sections reproduced courtesy of Technal.

1. elZinc® cladding
2. Membrane
3. Structural underlay
4. Folded galvanised steel profiles
5. elZinc® perforated sheet
6. elZinc® retention profile
7. Insulation
8. Wooden batten
9. Wall bracket
10. Substrate
11. elZinc® Diamond Tile