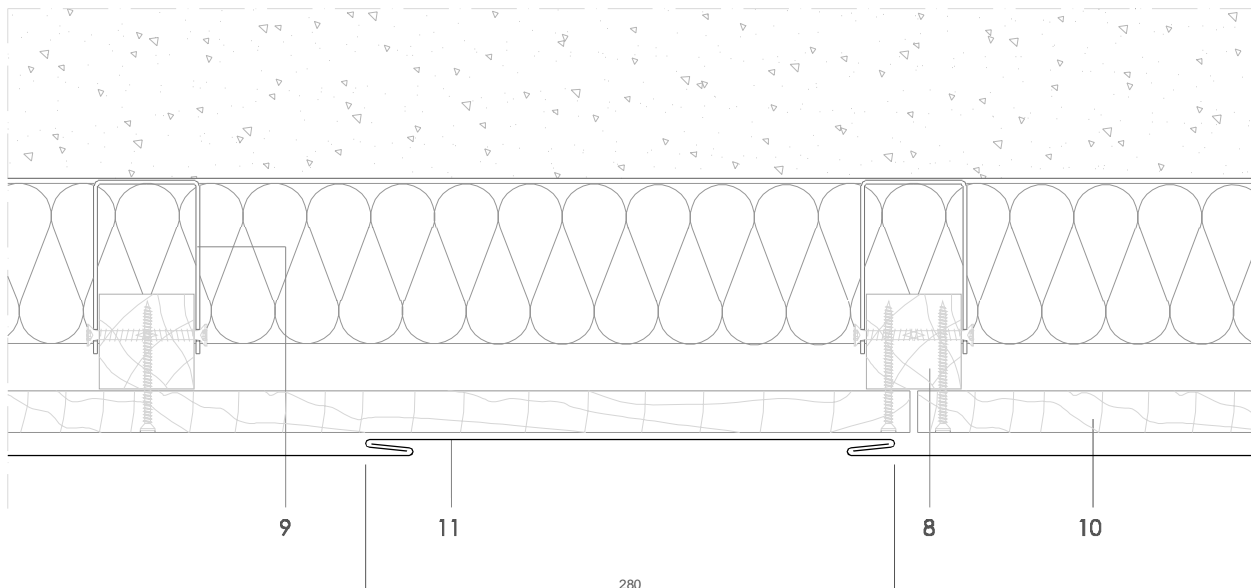


Traditional systems - Rhomboid Tile

T R 1.1.05 Horizontal section.



All dimensions are indicative unless specified on the drawing
Sheet thickness may be exaggerated for clarity

Scale 1/4

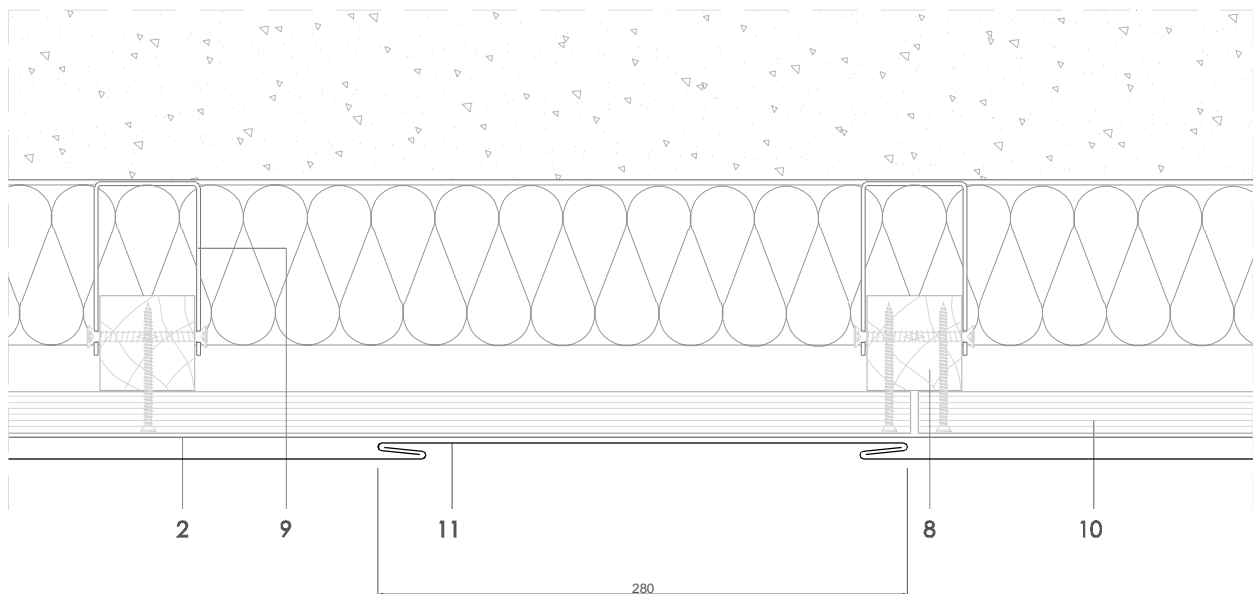
Notes:

- Consult local or national regulations to size the ventilation gap.
- The supporting structure is shown as wooden battens on generic 'U' brackets with low density insulation between battens. Other supporting systems are possible.
- If high density insulation is used the battens must be fixed entirely in front of the insulation.

1. elZinc® cladding
2. Membrane
3. Structural underlay
4. Folded galvanised steel profiles
5. elZinc® perforated sheet
6. elZinc® retention profile
7. Insulation
8. Wooden batten
9. Wall bracket
10. Substrate
11. elZinc® Rhomboid Tile

Traditional systems - Rhomboid Tile

T R 1.1.05 Horizontal section.



All dimensions are indicative unless specified on the drawing
Sheet thickness may be exaggerated for clarity

Scale 1/4

Notes:

- Consult local or national regulations to size the ventilation gap.
- The supporting structure is shown as wooden battens on generic 'U' brackets with low density insulation between battens. Other supporting systems are possible.
- If high density insulation is used the battens must be fixed entirely in front of the insulation.

1. elZinc® cladding
2. Membrane
3. Structural underlay
4. Folded galvanised steel profiles
5. elZinc® perforated sheet
6. elZinc® retention profile
7. Insulation
8. Wooden batten
9. Wall bracket
10. Substrate
11. elZinc® Rhomboid Tile