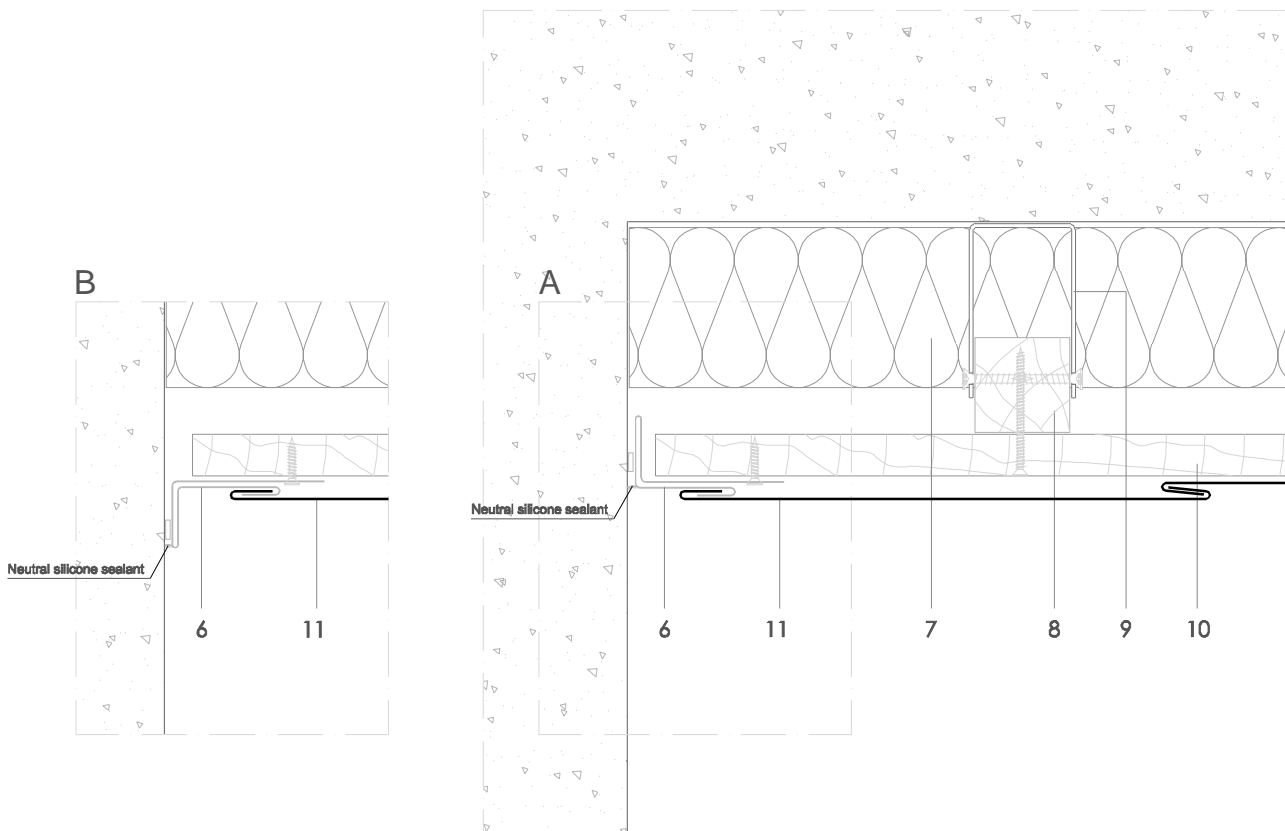


Traditional systems - Rhomboid Tile

T R 6.1.01 Reverse flashed abutment.



All dimensions are indicative unless specified on the drawing  
Sheet thickness may be exaggerated for clarity

Scale 1/4

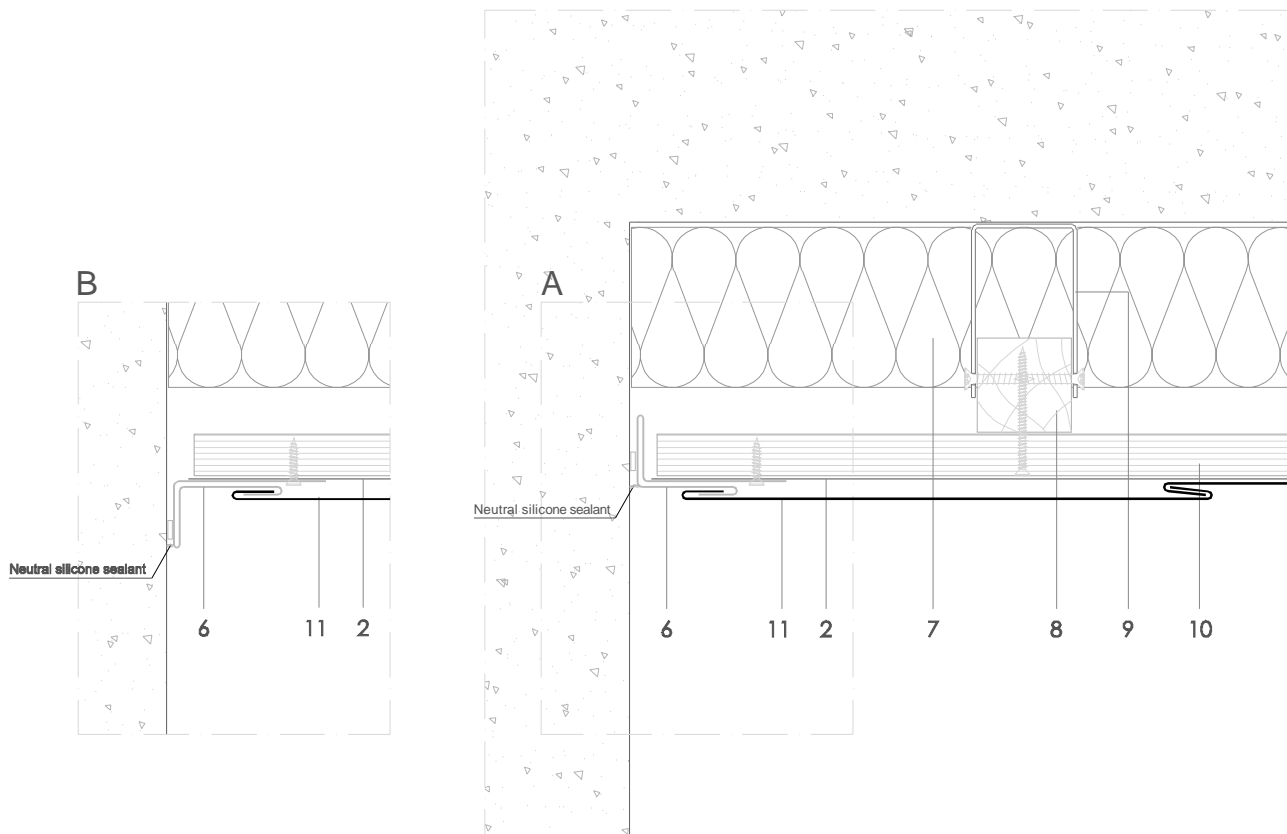
Notes:

- Corner piece front faces can be sized to match other elements of the façade such as wall capping, window surrounds etc.
- Similar in concept to external corner 5.1.01 and internal corner 5.2.01 .

1. elZinc® cladding
2. Membrane
3. Structural underlay
4. Folded galvanised steel profiles
5. elZinc® perforated sheet
6. elZinc® retention profile
7. Insulation
8. Wooden batten
9. Wall bracket
10. Substrate
11. elZinc® Rhomboid Tile

Traditional systems - Rhomboid Tile

T R 6.1.01 Reverse flashed abutment.



All dimensions are indicative unless specified on the drawing  
Sheet thickness may be exaggerated for clarity

Scale 1/4

Notes:

- Corner piece front faces can be sized to match other elements of the façade such as wall capping, window surrounds etc.
- Similar in concept to external corner 5.1.01 and internal corner 5.2.01 .

1. elZinc® cladding
2. Membrane
3. Structural underlay
4. Folded galvanised steel profiles
5. elZinc® perforated sheet
6. elZinc® retention profile
7. Insulation
8. Wooden batten
9. Wall bracket
10. Substrate
11. elZinc® Rhomboid Tile