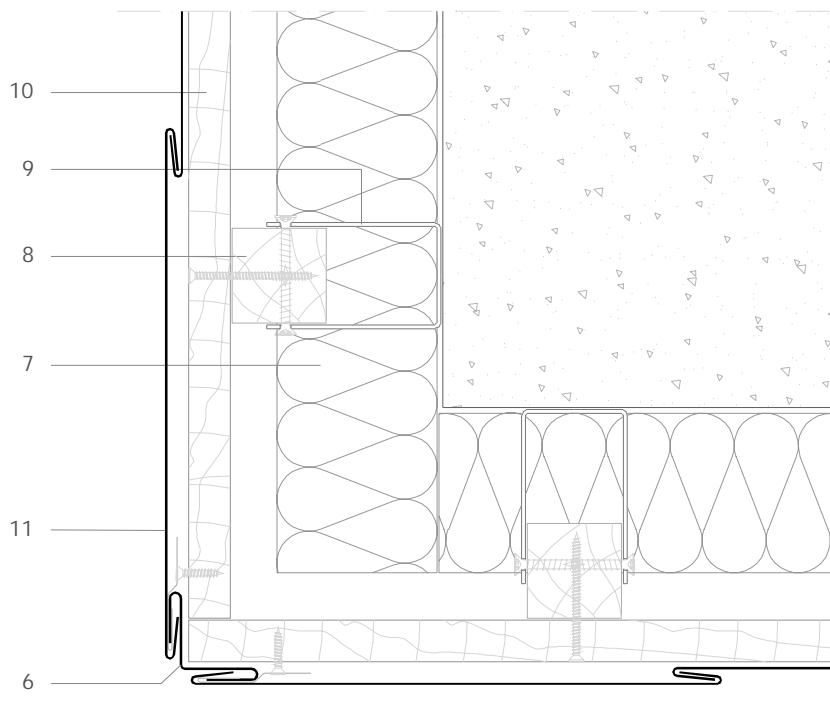


Traditional systems - Rhomboid Tile

T R 5.1.01 Reverse external corner.



All dimensions are indicative unless specified on the drawing
Sheet thickness may be exaggerated for clarity

Scale 1/4

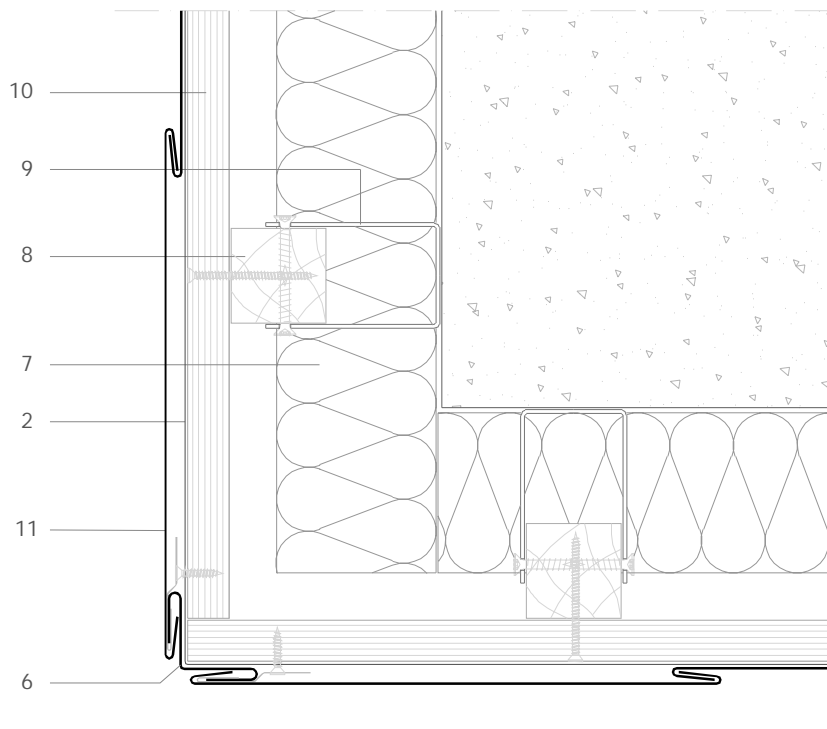
Notes:

- The hidden corner piece gives a clean-looking exterior corner.
- Similar in concept to internal corner 5.2.01 and reverse flashed abutment 6.1.01 .

1. elZinc® cladding
2. Membrane
3. Structural underlay
4. Folded galvanised steel profiles
5. elZinc® perforated sheet
6. elZinc® retention profile
7. Insulation
8. Wooden batten
9. Wall bracket
10. Substrate
11. elZinc® Rhomboid Tile

Traditional systems - Rhomboid Tile

T R 5.1.01 Reverse external corner.



All dimensions are indicative unless specified on the drawing
Sheet thickness may be exaggerated for clarity

Scale 1/4

Notes:

- The hidden corner piece gives a clean-looking exterior corner.
- Similar in concept to internal corner 5.2.01 and reverse flashed abutment 6.1.01 .

1. elZinc® cladding
2. Membrane
3. Structural underlay
4. Folded galvanised steel profiles
5. elZinc® perforated sheet
6. elZinc® retention profile
7. Insulation
8. Wooden batten
9. Wall bracket
10. Substrate
11. elZinc® Rhomboid Tile