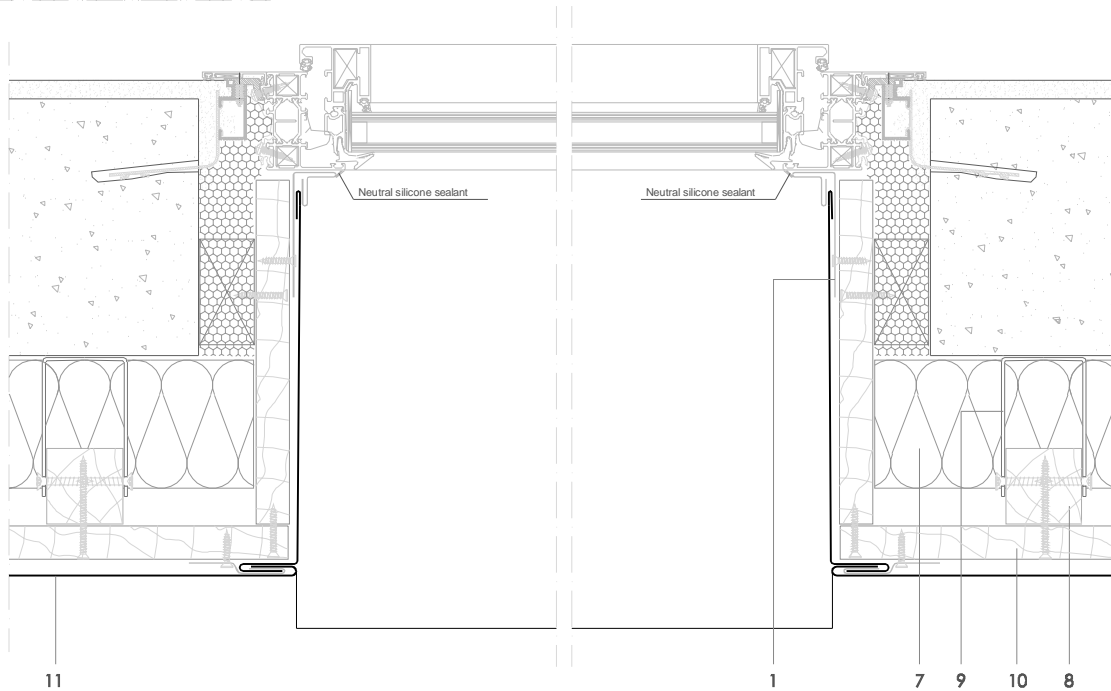
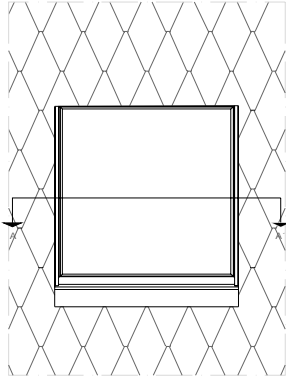


Traditional systems - Rhomboid Tile

T R 7.1.02 Horizontal window section (Vented sill).



All dimensions are indicative unless specified on the drawing
Sheet thickness may be exaggerated for clarity

Scale 1/5

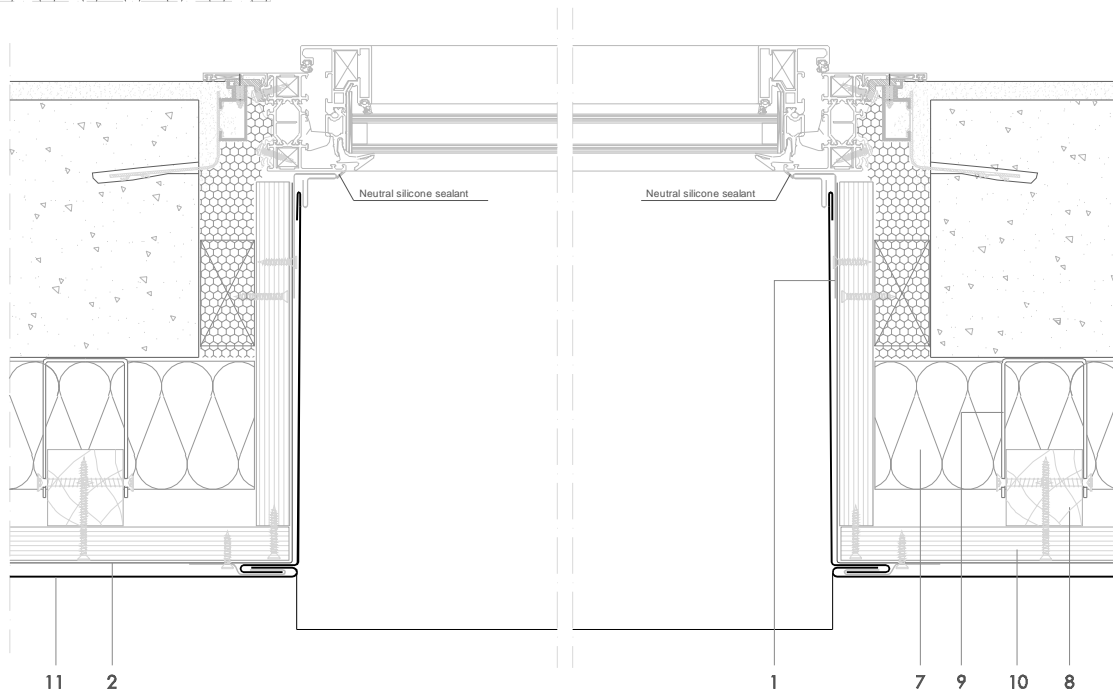
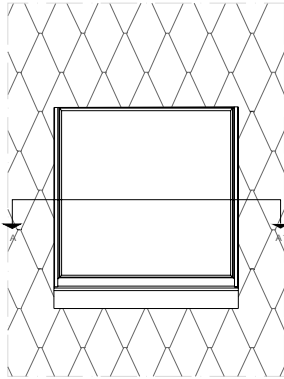
Notes:

- Used for wide windows with a vented sill. For narrow windows with an un-vented sill, see TR 7.2.01. y TR 7.2.02.
- For vertical section see TR 7.1.01.
- It is recommended to overlap the cladding with the sill by a minimum of 60mm.
- Generic structural details are given for indicative purposes only.
- Window sections reproduced courtesy of Technal.

1. elZinc® cladding
2. Membrane
3. Structural underlay
4. Folded galvanised steel profiles
5. elZinc® perforated sheet
6. elZinc® retention profile
7. Insulation
8. Wooden batten
9. Wall bracket
10. Substrate
11. elZinc® Rhomboid Tile

Traditional systems - Rhomboid Tile

T R 7.1.02 Horizontal window section (Vented sill).



All dimensions are indicative unless specified on the drawing
Sheet thickness may be exaggerated for clarity

Scale 1/5

Notes:

- Used for wide windows with a vented sill. For narrow windows with an un-vented sill, see TR 7.2.01. y TR 7.2.02.
- For vertical section see TR 7.1.01.
- It is recommended to overlap the cladding with the sill by a minimum of 60mm.
- Generic structural details are given for indicative purposes only.
- Window sections reproduced courtesy of Technal.

1. elZinc® cladding
2. Membrane
3. Structural underlay
4. Folded galvanised steel profiles
5. elZinc® perforated sheet
6. elZinc® retention profile
7. Insulation
8. Wooden batten
9. Wall bracket
10. Substrate
11. elZinc® Rhomboid Tile