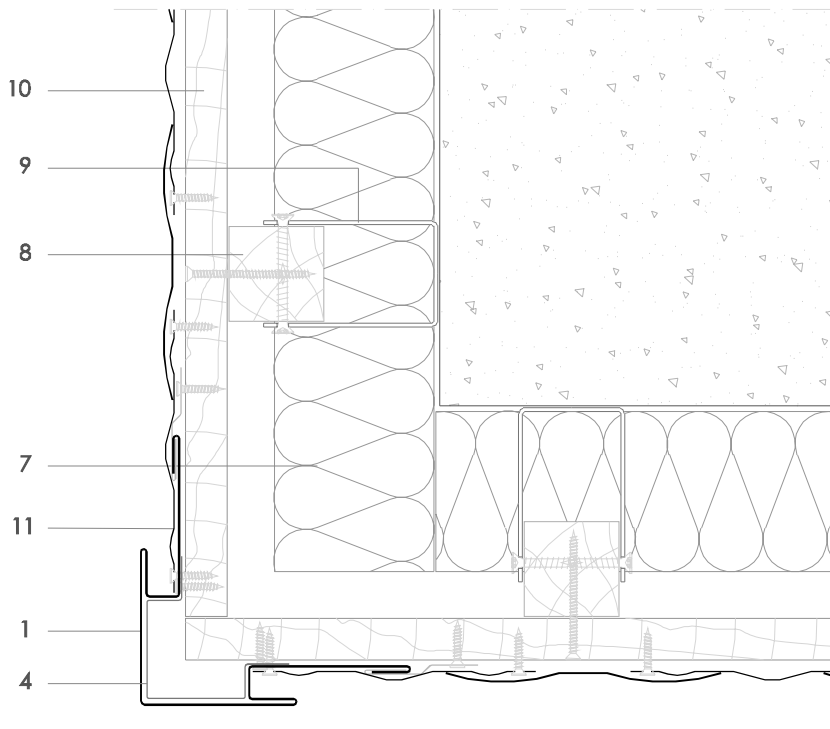


Traditional systems - Rounded Fish Scale Tile

T RF 5.1.01 Capped external corner.



Scale 1/4

All dimensions are indicative unless specified on the drawing
Sheet thickness may be exaggerated for clarity

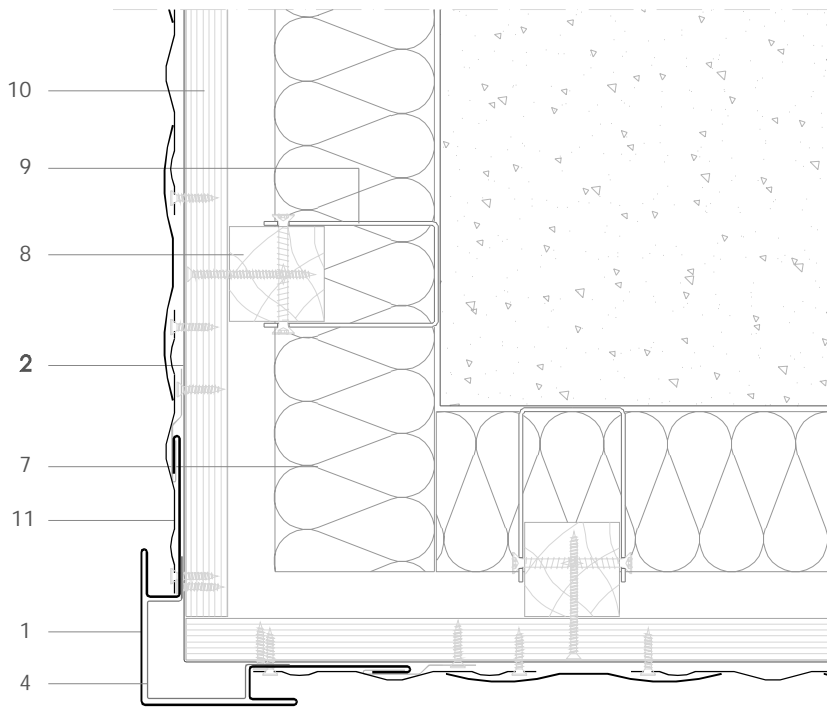
Notes:

- Corner piece front faces can be sized to match other elements of the façade such as wall capping, window surrounds etc.

1. elZinc® cladding
2. Membrane
3. Structural underlay
4. Folded galvanised steel profiles
5. elZinc® perforated sheet
6. elZinc® retention profile
7. Insulation
8. Wooden batten
9. Wall bracket
10. Substrate
11. elZinc® Rounded Fish Scale Tile

Traditional systems - Rounded Fish Scale Tile

T RF 5.1.01 Capped external corner.



Scale 1/4

All dimensions are indicative unless specified on the drawing
Sheet thickness may be exaggerated for clarity

Notes:

- Corner piece front faces can be sized to match other elements of the façade such as wall capping, window surrounds etc.

1. elZinc® cladding
2. Membrane
3. Structural underlay
4. Folded galvanised steel profiles
5. elZinc® perforated sheet
6. elZinc® retention profile
7. Insulation
8. Wooden batten
9. Wall bracket
10. Substrate
11. elZinc® Rounded Fish Scale Tile

Sistema de Gestión de Calidad Certificado nº 12 100 42 851 TMS

The information contained in this document-drawing- has a purely informative function and been elaborated with the intention of assisting building professionals in regard to the installation of elZinc® cladding systems. It is the responsibility of the architect, building contractor and installer in any case to ensure the validity of the specific details employed on each project. Asla-elZinc® rejects any responsibility due to direct or indirect damage that may arise from the use of the information contained in this document

All rights reserved with regard to this document. Non authorised use will be prosecuted



elZinc®
Tel. +34 984 116 332
Fax. +34 985 493 202
www.elzinc.es

Asturiana de Laminados S.A.
Pol. Ind. de Olloniego, Parcela C1
33660 Olloniego Asturias, Spain
elzinc@aslazinc.com