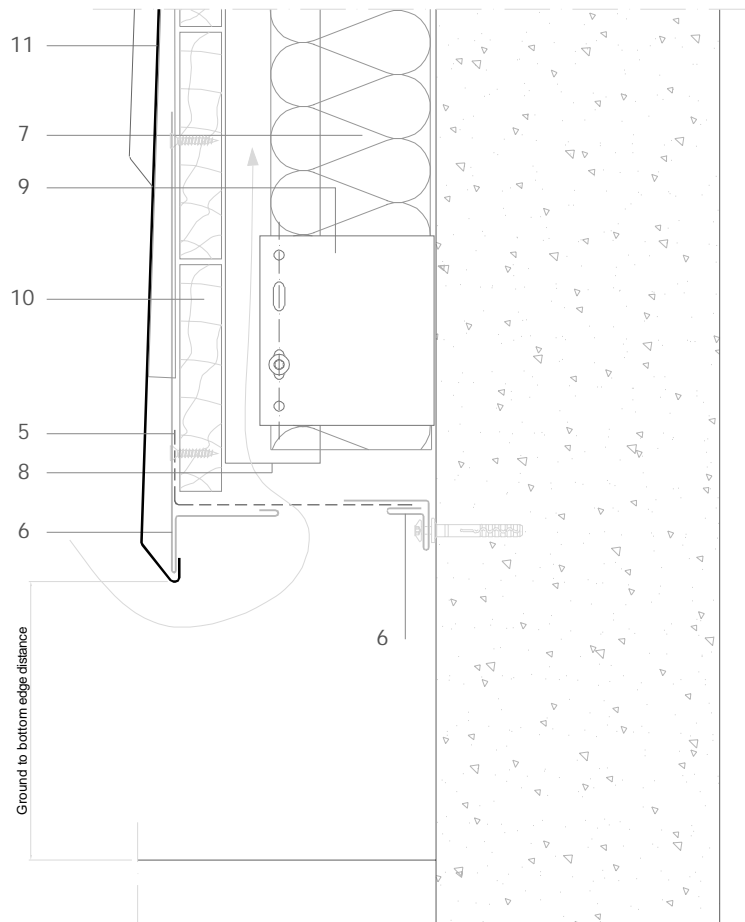


Traditional systems - Square Tile

T S 3.1.01 Ground level foot.



All dimensions are indicative unless specified on the drawing
Sheet thickness may be exaggerated for clarity

Scale 1/4

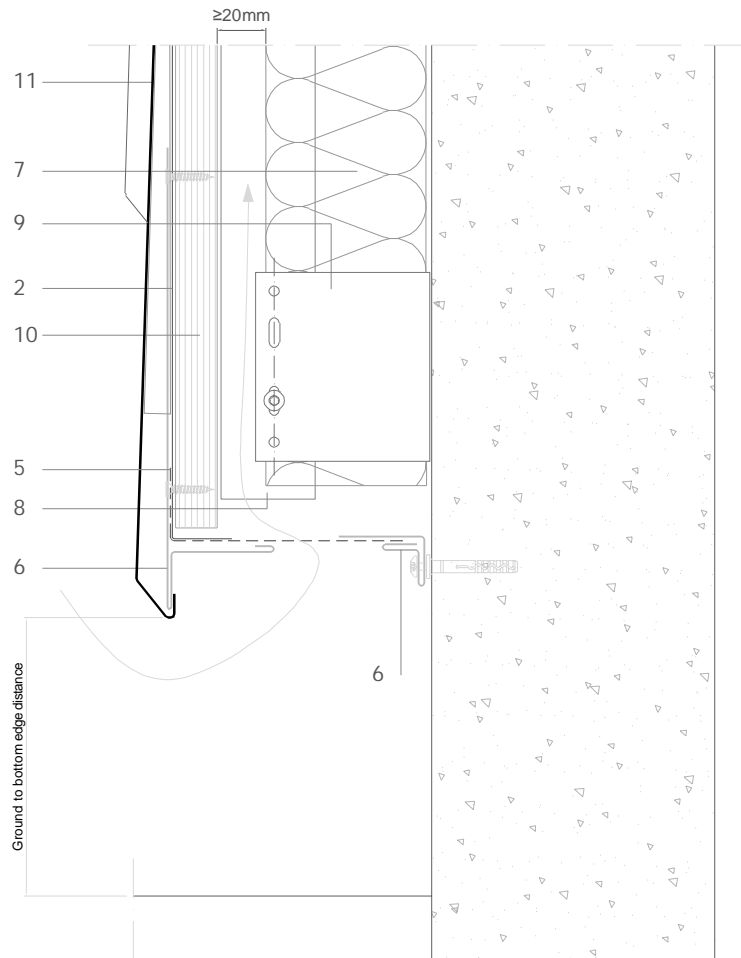
Notes:

- A tall T plate flashing is installed to cover the cladding foot between tiles along the bottom row. This avoids making half tiles.
- The T plate's fixings should be located such that they will be covered by the first row of tiles.
- Generic structural details given for indicative purposes only.

1. elZinc® cladding
2. Membrane
3. Structural underlay
4. Folded galvanised steel profiles
5. elZinc® perforated sheet
6. elZinc® retention profile
7. Insulation
8. Wooden batten
9. Wall bracket
10. Substrate
11. elZinc® Square Tile

Traditional systems - Square Tile

T S 3.1.01 Ground level foot.



All dimensions are indicative unless specified on the drawing
Sheet thickness may be exaggerated for clarity

Scale 1/5

Notes:

- A tall T plate flashing is installed to cover the cladding foot between tiles along the bottom row. This avoids making half tiles.
- The T plate's fixings should be located such that they will be covered by the first row of tiles.
- Generic structural details given for indicative purposes only.

1. elZinc® cladding
2. Membrane
3. Structural underlay
4. Folded galvanised steel profiles
5. elZinc® perforated sheet
6. elZinc® retention profile
7. Insulation
8. Wooden batten
9. Wall bracket
10. Substrate
11. elZinc® Square Tile

Sistema de Gestión de Calidad Certificado nº 12 100 42 851 TMS

The information contained in this document-drawing- has a purely informative function and been elaborated with the intention of assisting building professionals in regard to the installation of elZinc® cladding systems. It is the responsibility of the architect, building contractor and installer in any case to ensure the validity of the specific details employed on each project. Asia-elZinc® rejects any responsibility due to direct or indirect damage that may arise from the use of the information contained in this document.

All rights reserved with regard to this document. Non authorised use will be prosecuted



elZinc®
Tel. +34 984 116 332
Fax. +34 985 493 202
www.elzinc.es

Asturiana de Laminados S.A.
Pol. Ind. de Olloniego, Parcela C1
33660 Olloniego Asturias, Spain
elzinc@aslzinc.com