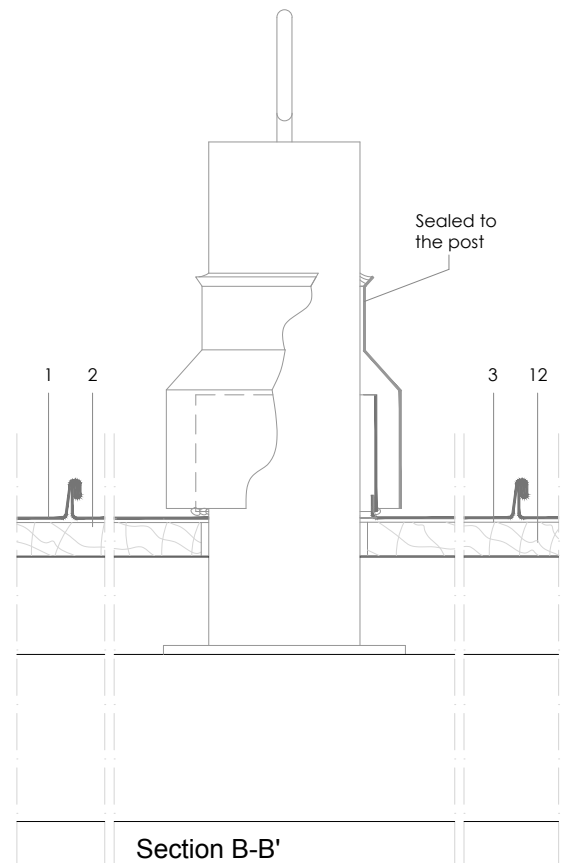
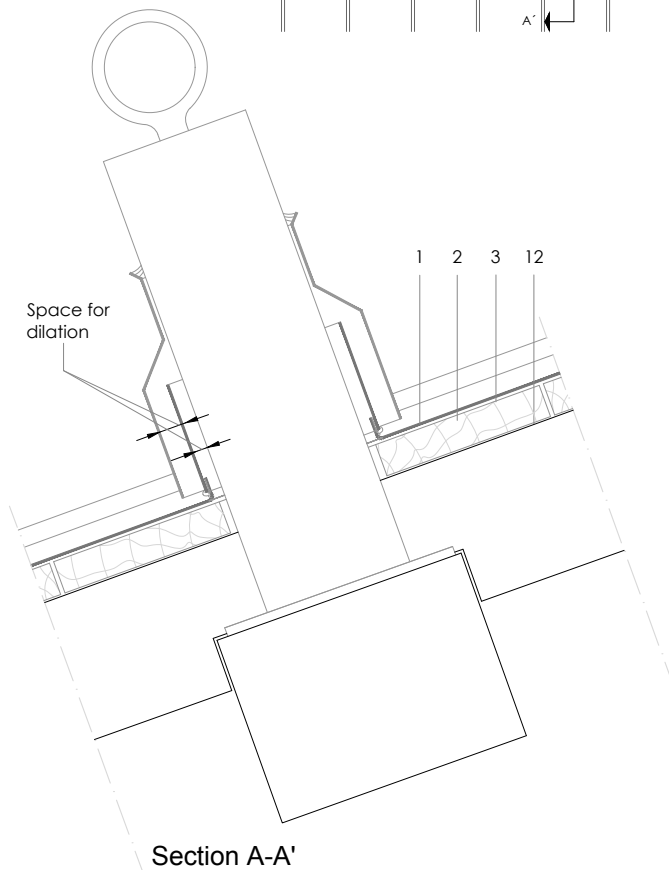
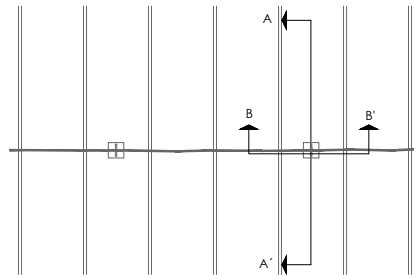


DLSS 17.1.02. Circular fall arrest post fixed through cladding



All dimensions are indicative unless specified on the drawing
Sheet thickness may be exaggerated for clarity

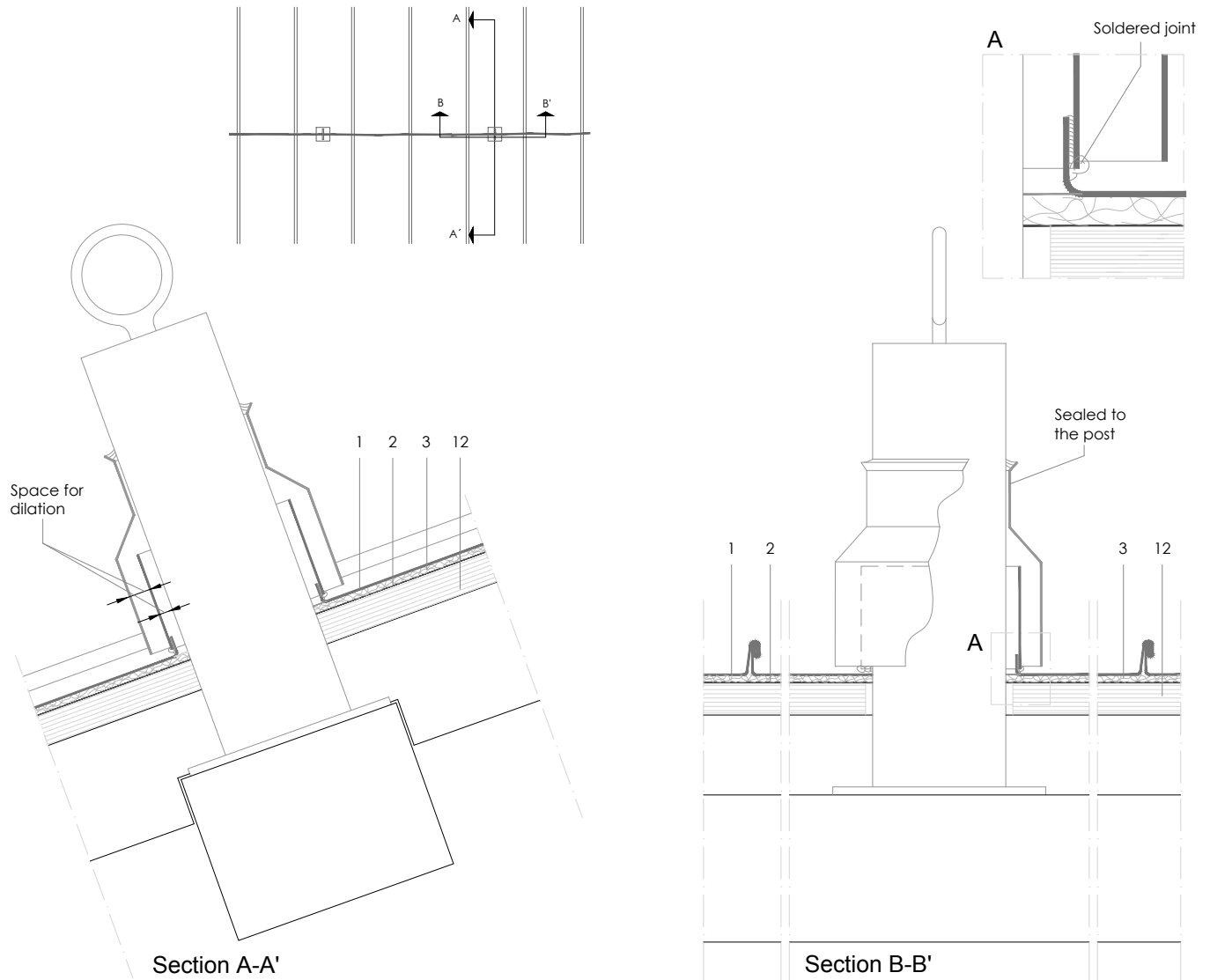
Scale 1/5

Notes:

- Circular posts.
- Try to coordinate the positioning of the posts such that they do not interrupt a seam.
- Use elZinc® fluxes and strippers when preparing the material for soldering.
- Generic structural details are shown for illustrative purposes only.

1. elZinc® cladding
2. Membrane
3. Structural underlay
4. Folded galvanised steel profiles
5. elZinc® perforated sheet
6. elZinc® retention profile
7. Insulation
8. elZinc® hung gutter
9. Gutter clip
10. Gutter bracket
11. elZinc® clip
12. Substrate

DLSS 17.1.02. Circular fall arrest post fixed through cladding



All dimensions are indicative unless specified on the drawing
Sheet thickness may be exaggerated for clarity

Scale 1/5

Notes:

- Rectangular posts.
- Try to coordinate the positioning of the posts such that they do not interrupt a seam.
- Use elZinc® fluxes and strippers when preparing the material for soldering.
- Generic structural details are shown for illustrative purposes only. See manufacturer's instructions for the correct installation of the fall arrest system.

1. elZinc® cladding
2. Membrane
3. Structural underlay
4. Folded galvanised steel profiles
5. elZinc® perforated sheet
6. elZinc® retention profile
7. Insulation
8. elZinc® hung gutter
9. Gutter clip
10. Gutter bracket
11. elZinc® clip
12. Substrate