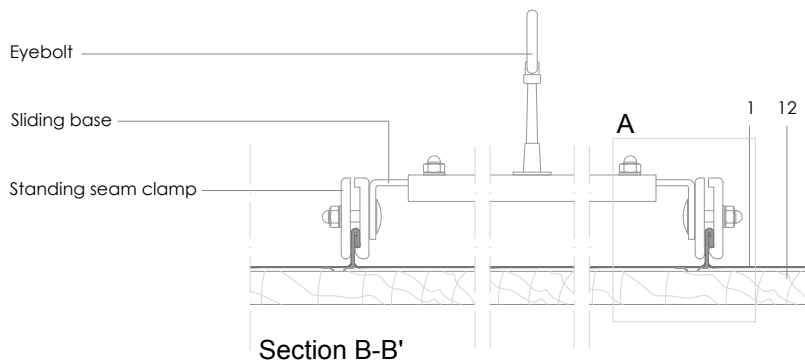
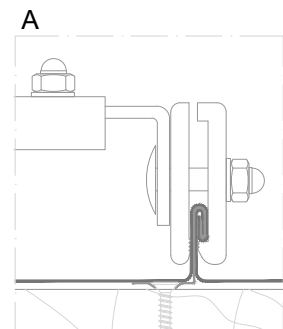
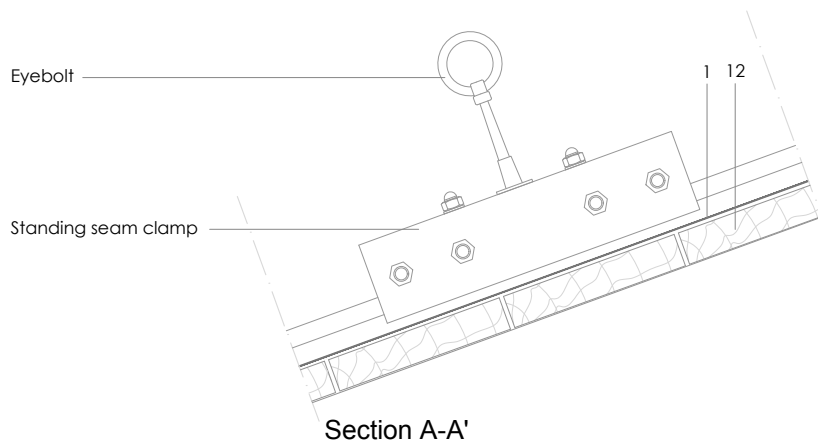
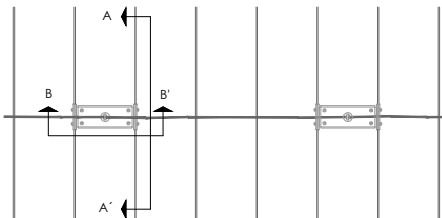


DLSS 17.2.01. Fall arrest system clamped to standing seams



All dimensions are indicative unless specified on the drawing
Sheet thickness may be exaggerated for clarity

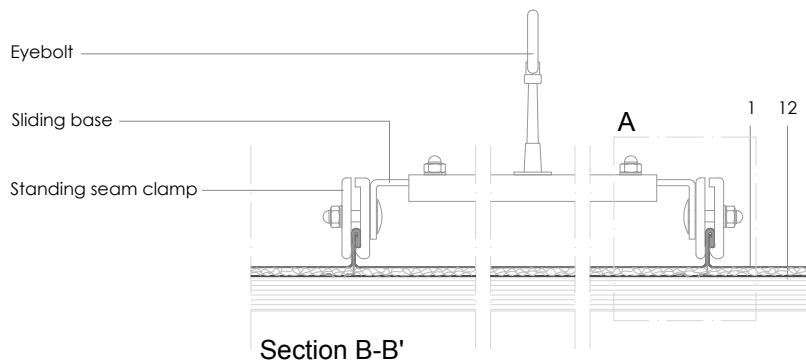
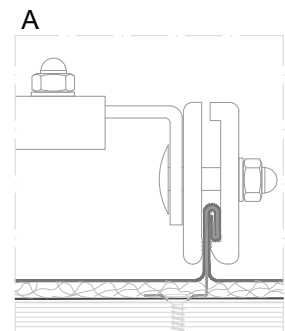
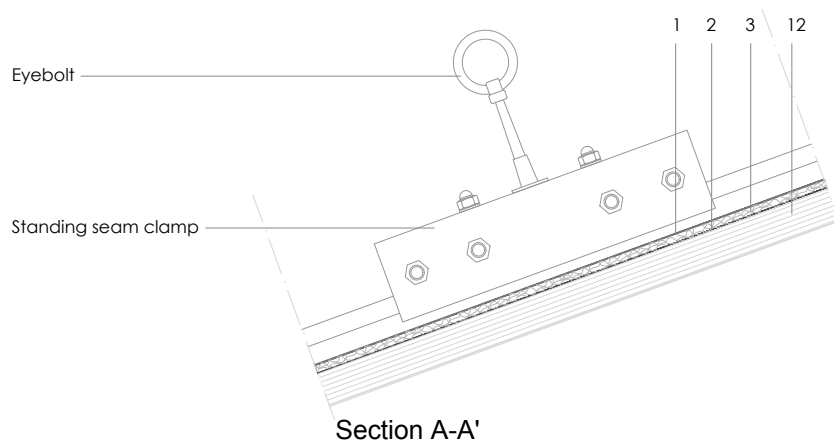
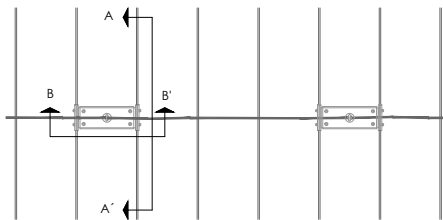
Scale 1/5

Notes:

- System clamped to the standing seams.
- Avoids perforating the roofing sheets.
- The number of clips fixing the seam to the substrate should be increased under the plate, so forward planning is required. Consult the manufacturer for more information.
- Generic structural details are shown for illustrative purposes only.

1. elZinc® cladding
2. Membrane
3. Structural underlay
4. Folded galvanised steel profiles
5. elZinc® perforated sheet
6. elZinc® retention profile
7. Insulation
8. elZinc® hung gutter
9. Gutter clip
10. Gutter bracket
11. elZinc® clip
12. Substrate

DLSS 17.2.01. Fall arrest system clamped to standing seams



All dimensions are indicative unless specified on the drawing
Sheet thickness may be exaggerated for clarity

Scale 1/5

Notes:

- System clamped to the standing seams.
- Avoids perforating the roofing sheets.
- The number of clips fixing the seam to the substrate should be increased under the plate, so forward planning is required. Consult the manufacturer for more information.
- Generic structural details are shown for illustrative purposes only.

1. elZinc® cladding
2. Membrane
3. Structural underlay
4. Folded galvanised steel profiles
5. elZinc® perforated sheet
6. elZinc® retention profile
7. Insulation
8. elZinc® hung gutter
9. Gutter clip
10. Gutter bracket
11. elZinc® clip
12. Substrate