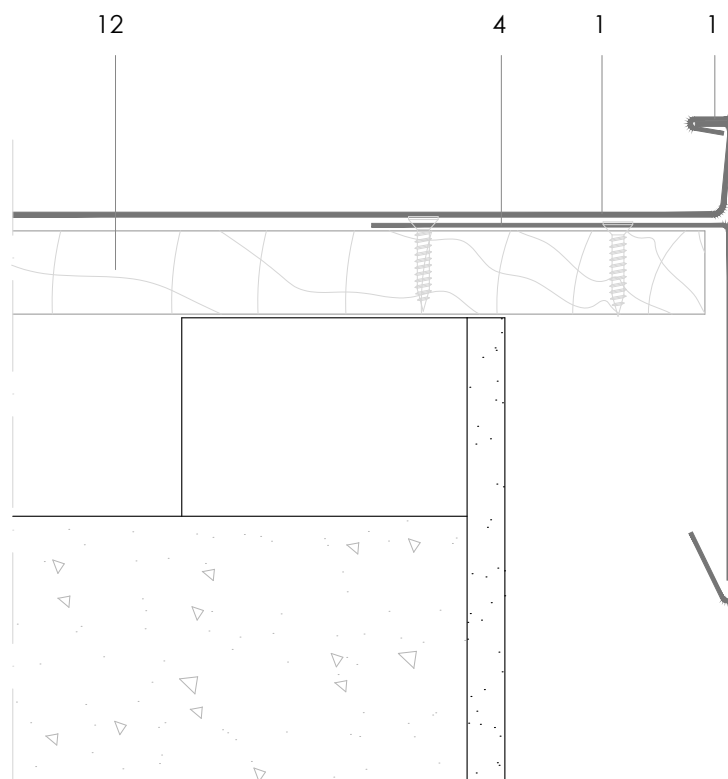


DLSS 8.1.01 Standing seam verge (shallow).



All dimensions are indicative unless specified on the drawing
Sheet thickness may be exaggerated for clarity

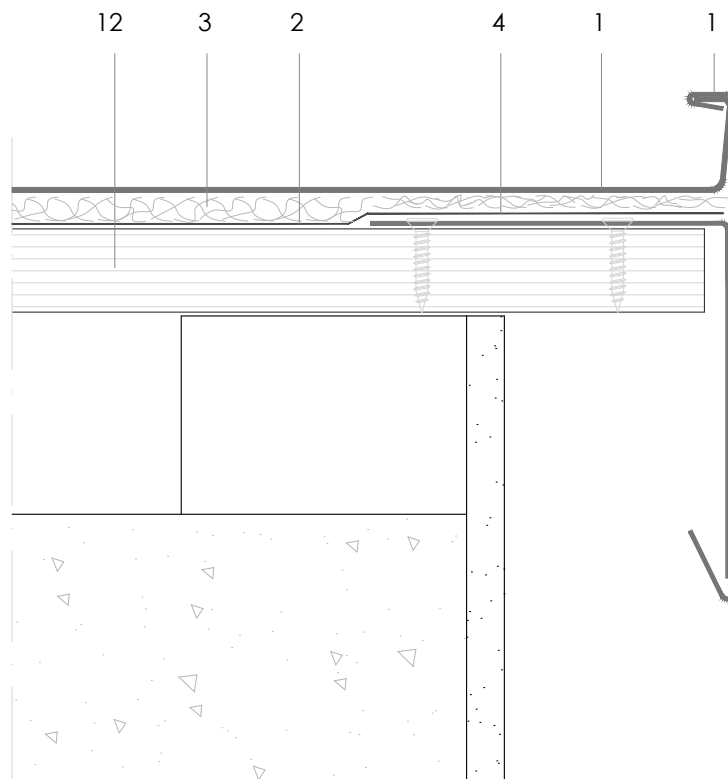
Scale 1/2

Notes:

- Depth of gable should not exceed 200mm. If greater depth is required, see DLSS 8.1.02).
- Interlocked end to end joints are recommended for verges deeper than 100mm.
- Outline structural details are shown for indicative purposes only.

1. elZinc® cladding
2. Membrane
3. Structural underlay
4. Folded galvanised steel profiles
5. elZinc® perforated sheet
6. elZinc® retention profile
7. Insulation
8. elZinc® hung gutter
9. Gutter clip
10. Gutter bracket
11. elZinc® clip
12. Substrate

DLSS 8.1.01 Standing seam verge (shallow).



All dimensions are indicative unless specified on the drawing
Sheet thickness may be exaggerated for clarity

Scale 1/2

Notes:

- Depth of gable should not exceed 200mm. If greater depth is required, see DLSS 8.1.02).
- Interlocked end to end joints are recommended for verges deeper than 100mm.
- Outline structural details are shown for indicative purposes only.

1. elZinc® cladding
2. Membrane
3. Structural underlay
4. Folded galvanised steel profiles
5. elZinc® perforated sheet
6. elZinc® retention profile
7. Insulation
8. elZinc® hung gutter
9. Gutter clip
10. Gutter bracket
11. elZinc® clip
12. Substrate