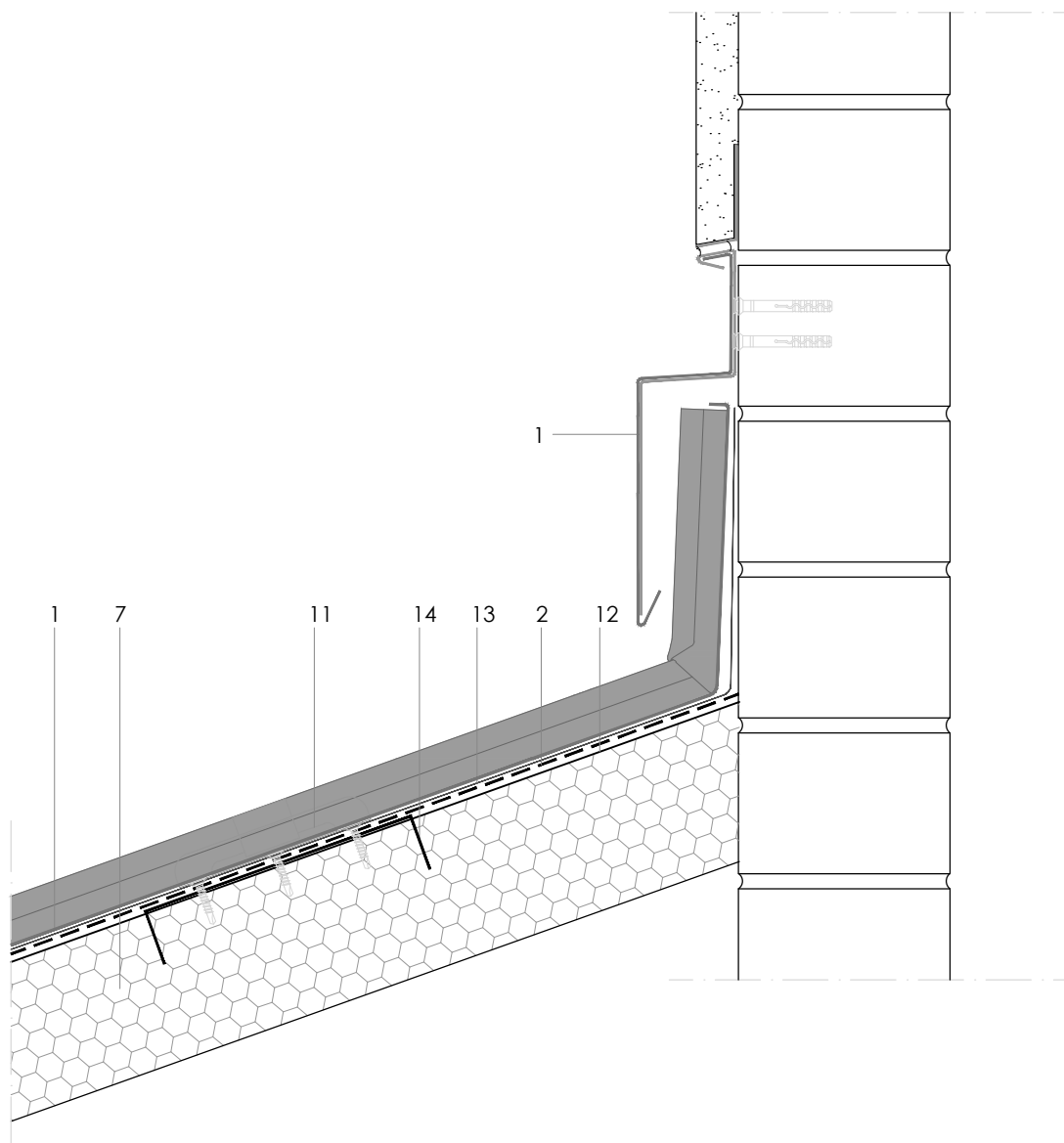


DLSS FG 6.2.03



Scale 1/4

All dimensions are indicative unless specified on the drawing
Sheet thickness may be exaggerated for clarity

Notes:

- Outline structural details are shown for indicative purposes only.

- elZinc® cladding Protect+
- Roofing membrane
- Structural underlay
- Folded galvanised steel profiles
- elZinc® perforated sheet
- elZinc® retention profile
- Celular glass insulation
- elZinc® hung gutter
- Gutter clip
- Gutter bracket
- elZinc® clip
- Hot applied bitumen
- Separating membrane
- Fixing plate in galvanised

Sistema de Gestión de Calidad Certificado nº 12 100 42 851 TMS

The information contained in this document-drawing- has a purely informative function and been elaborated with the intention of assisting building professionals in regard to the installation of elZinc® cladding systems. It is the responsibility of the architect, building contractor and installer in any case to ensure the validity of the specific details employed on each project. Asla-elZinc® rejects any responsibility due to direct or indirect damage that may arise from the use of the information contained in this document

All rights reserved with regard to this document. Non authorised use will be prosecuted



elZinc®
Tel. +34 985 676 000
Fax. +34 985 692 000
www.elzinc.es

Asturiana de Laminados S.A.
Pol. Ind. de Villallana, Parcela 1
33695 Pola de Lena, Asturias, Spain
elzinc@aslazinc.com