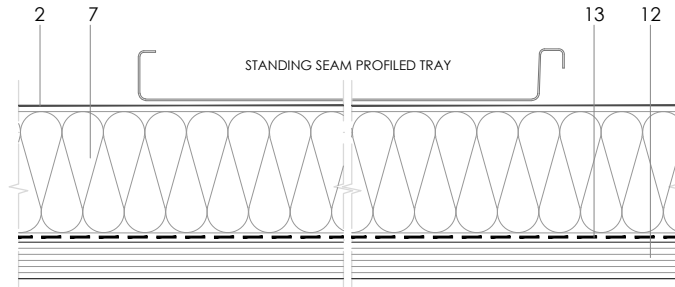
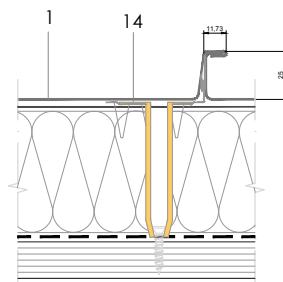


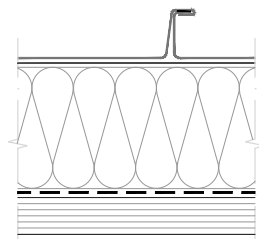
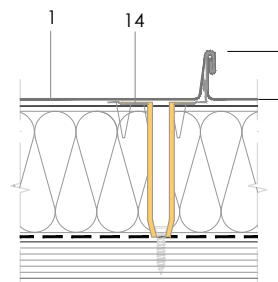
DLSS RI 1.1.01 Standing seam.



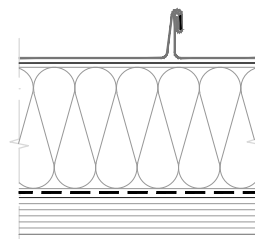
A. ANGLE STANDING SEAM
Stainless steel clip



B. DOUBLE LOCK STANDING SEAM
Stainless steel clip



Stainless steel clip omitted for clarity



Stainless steel clip omitted for clarity

Scale 1/4

All dimensions are indicative unless specified on the drawing
Sheet thickness may be exaggerated for clarity

Notes:

- Annular ring-shank nails can be used instead of screws to fix clips.
- Angle standing seam is used principally for façades and steeply pitched roofs.
- Compriband sealing is generally advised below 3° of pitch.
- Stainless steel fixed clips are shown. Sliding clips are used together with fixed clips for tray lengths greater than 1.5m.

1. elZinc® cladding Protect+
2. Separating membrane
3. Structural underlay
4. Folded galvanised steel profiles
5. elZinc® perforated sheet
6. elZinc® retention profile
7. Rigid insulation
8. elZinc® hung gutter
9. Gutter clip
10. Gutter bracket
11. elZinc® clip
12. Substrate (Ply or Metal Deck)
13. High performance vapour barrier
14. Rigid insulation fixing clip