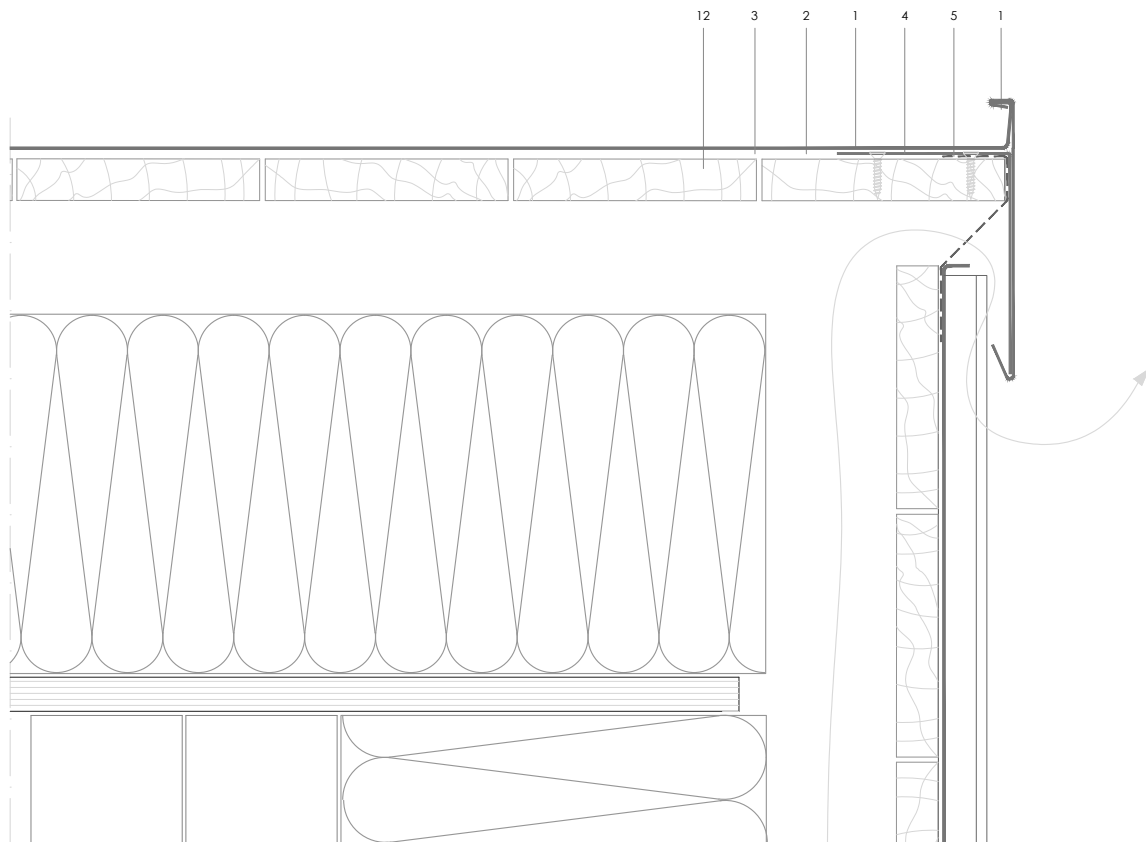


DLSS 8.1.03a Standing seam verge over ventilated angle seam cladding.



Scale 1/4

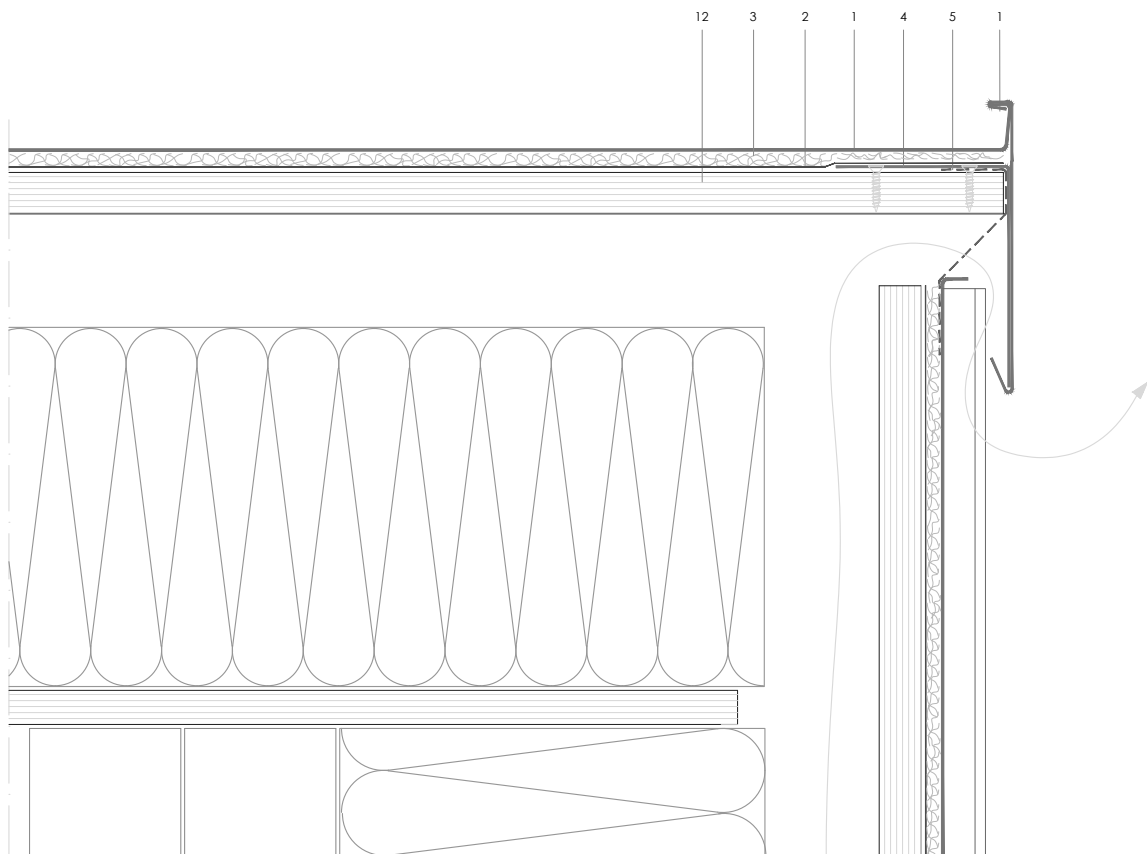
All dimensions are indicative unless specified on the drawing  
Sheet thickness may be exaggerated for clarity

Notes:

- Interlocked end to end joints are recommended for verges deeper than 100mm.

1. elZinc® cladding
2. Membrane
3. Structural underlay
4. Folded galvanised steel profiles
5. elZinc® perforated sheet
6. elZinc® retention profile
7. Insulation
8. elZinc® hung gutter
9. Gutter clip
10. Gutter bracket
11. elZinc® clip
12. Substrate

DLSS 8.1.03a Standing seam verge over ventilated angle seam cladding.



All dimensions are indicative unless specified on the drawing  
Sheet thickness may be exaggerated for clarity

Scale 1/4

Notes:

- Interlocked end to end joints are recommended for verges deeper than 100mm.

1. elZinc® cladding
2. Membrane
3. Structural underlay
4. Folded galvanised steel profiles
5. elZinc® perforated sheet
6. elZinc® retention profile
7. Insulation
8. elZinc® hung gutter
9. Gutter clip
10. Gutter bracket
11. elZinc® clip
12. Substrate