

The zinc house by the lake



Its dream-like location –facing the Attersee lake – and its modern design offer truly enviable living conditions.

Modern design in zinc-titanium and a dream-like location by a lake are some features of this house that belongs to the Fürtbauer Family (Austria), a generation spanning line of installers.

Since 1929, the Austrian roofing Company Fürtbauer Spengler und Dachdecker GmbH have passed down their know-how from one generation to the next. The current owner, Maximilian Furtbauer, who holds the title Master Craftsmen, tells us about the new family residence he personally clad in zinc-titanium. Its dream-like location – facing the Attersee lake – and its modern design offer truly enviable living conditions.

Roof and façade continuity

The roofing and façade have been clad in zinc-titanium. "They are clad with 0.8 mm thick elZinc Slate® pre-patinated zinc standing seam trays. The support is made of metal. We discarded wood altogether," explained Maximilian Fürtbauer.

Manufactured according to the EN 988 standard, elZinc Slate® is a pre-patinated gray zinc, very similar in appearance to the patina zinc naturally develops over time. The zinc's standing seam system adapts to any climate and geometries, guaranteeing an optimal watertightness.

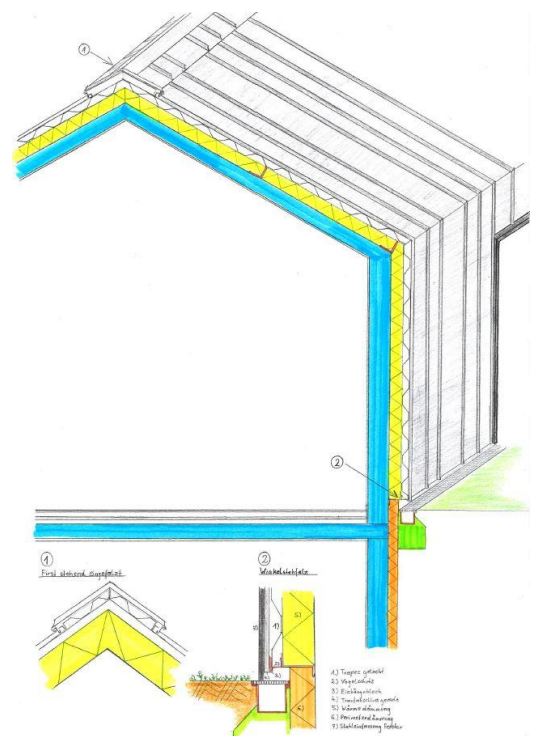


The deck and cladding act as a tribute to the saw tooth profile of the old factory

The details of the project

Instead of a wood substrate, the master tinsmith installed a 'double L' profile structure on the gable roof, which in turn had been previously waterproofed with bituminous sheeting. "The 23cm thick concrete structure supports the weight and also helps keep the interior cool in summer. We installed an 18cm thick insulating layer of rockwool between the 'double L' profiles. The substrate consists of a 1mm thick galvanized metal sheet", explains the installation manager. The perforated trapezoidal metal decking allows roof ventilation.

There are no overlapping seams or overhanging eaves on the angle seam envelope.



The zinc-titanium roofing was installed on the outside faces of the decking, while the inside faces were fixed to the metal 'L' profiles fixed on top of the membrane. The perforated holes in the trapezoidal metal deck are only on the inclined faces. Since the components are hand folded and perforated, the ventilated metal substructure is custom-made. To allow for airflow, the eaves and the ridge were vented. The trapezoidal profiles were screwed in a horizontal direction to the supporting structure, with the fixing points on the inside face. The zinc cladding was fixed to the trapezoidal metal deck using the angle seam system.



The deck and façade have been completely clad in zinc.

Combining modernity, tradition and technique

The seam layout, the zinc-titanium and the technique used give the building a modern look, as well as a high level of craftsmanship. "The eave gutter has been removed. That way, there are no overhanging gutters", the Director points out. The rainwater discharge on the deck is the result of a very carefully planned construction technique. This design gives the house a modern, clean look, with no gutters to clutter the view.

The trays were profiled to various bay widths to give rhythm to the elevations of the house. The vertical seams run from the eave or fascia all the way to the ground in long monolithic trays, with the angle seam system reinforcing the vertical directionality of the design. The angle seams are more stable and easier to install perfectly straight than double lock standing seams.

Fixing of the zinc sheets to the metal deck was carried out using stainless steel clips and fasteners.

The window surrounds are yet another work of art. The owner explained that: "We crafted the window frames from aluminum to match the façade's colour, and then clad and installed it properly".

The actors of the project

Architects:

Feichtinger Architects (Grieskirchen Austria) in collaboration with the Fürtbauer Dachdecker und Spengler GmbH (Laakirchen, Austria) project company

Installers:

Fürtbauer Dachdecker und Spengler GmbH (Laakirchen, Austria)

Material:

elZinc Slate Protect+ 0,8 mmin matt gray



As elegant by night as by day