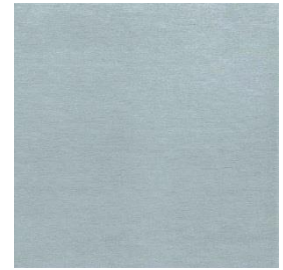


elZinc Crystal



elZinc Crystal®



elZinc Crystal creates striking effects that personalize your façades.

elZinc Crystal is a rolled architectural titanium zinc pre-patinated to a pearl grey color. Its changing reflections play with light and give it a different look depending on its exposure.

elZinc Crystal is manufactured according to the requirements established by EN1179, EN988 and ASTM B-69 standards. During the manufacturing process, small amounts of titanium and copper are alloyed to electrolytic zinc of greater than 99,995% purity to achieve outstanding material properties that exceed the requirements established by EN988.

Main applications

- Roofing and façade cladding.
- Rainwater systems
- Interior decoration

Standard measurements

- Widths: 500 - 600 - 650 - 670 - 1000 mm
- Thicknesses: 0,65 - 0,7 - 0,8 - 1 mm

Other non-standard thicknesses are available upon request, from a minimum of 0,5mm to a maximum of 1,2mm.

Formats

- 1000 kg coils (internal diameter: 508mm)
- Fixed length 100 kg coils (pallets of 6 300 mm internal diameter coils)
- Sheets 2000x1000 mm in pallets of 1000 kg

Other dimensions and thicknesses are available upon request.

Back Face

- Back face in same colour as front.

Specific working recommendations

- Correct behavior of the film on removal cannot be guaranteed beyond 8 months after dispatch from elZinc, plus an additional maximum of 2 months after installation. Adhesive residue can also remain on the surface of the zinc, which is difficult to remove.
- In order to correctly solder the material, the surface finish must be removed to reveal the shiny base metal below. To do this, elZinc recommends elZinc Flux for preweathered finishes, which has been specially developed for this purpose.
- Most folding and profiling operations can be executed once the material temperature has reached 7°C.
- Fold the material with an internal radius of 2x the thickness of the zinc.
- Having a pre-patinated finish, elZinc Crystal can show slight variations in shade.
- In locations with high salinity, we recommend the use of **elZinc Crystal Advance**.

For more information, contact us or visit our webpage: www.elzinc.es.