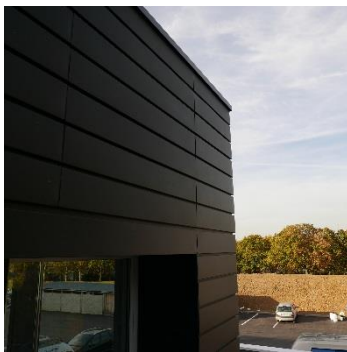


elZinc Graphite®



elZinc Graphite®



*elZinc Graphite®
harmonizes perfectly with
other building materials.*

elZinc Graphite® is rolled architectural titanium zinc pre-patinated to a dark grey colour which is very similar to natural slate. This finish is produced after the surface has undergone a non-polluting phosphating process.

elZinc Graphite® is manufactured according to the requirements established by EN1179, EN988 and ASTM B-69 standards. During the manufacturing process, small amounts of titanium and copper are alloyed to electrolytic zinc of greater than 99,995% purity to achieve outstanding material properties that exceed the requirements established by EN988 and ASTM B-69.

Main applications

- Roofing and façade cladding
- Rainwater systems
- Interior decoration

Standard measurements

- Widths: 500 - 600 - 650 - 670 - 1000 mm
- Thicknesses: 0,65 - 0,7 - 0,8 - 1 mm

Other non-standard thicknesses are available upon request, from a minimum of 0,5mm to a maximum of 1,5mm.

Formats

- 1000kg coils (internal diameter: 508mm).
- Fixed length 100kg coils (pallet of 6 300 mm internal diameter coils).

Sheets 1000x2000mm and 1000x3000mm: in pallets of 1000kg.

Other dimensions are available upon request.

Back Face

- Back face in same colour as front.

For more information, contact us or visit our webpage www.elzinc.es.

Specific recommendations for the handling

- Correct behavior of the film on removal cannot be guaranteed beyond 8 months after dispatch from elZinc, plus an additional maximum of 2 months after installation. Adhesive residue can also remain on the surface of the zinc, which is difficult to remove.
- In order to correctly solder the material, the surface finish must be removed to reveal the shiny base metal below. To do this, elZinc recommends elZinc Flux, which has been specially developed for this purpose.
- Most folding and profiling operations can be executed once the material temperature has reached 7°C.
- Fold the material with an internal radius of: 2x the thickness of the zinc.
- Having a pre-patinated finish, elZinc Graphite® can have slight variations in shade.
- In locations with high salinity, we recommend the use of **elZinc Graphite Advance**.
- Due to its colour characteristics, elZinc Graphite® is more sensitive to building site dust and dirt. For this reason, we recommend taking extra care during the handling and protection of this material during the installation phase.

This document describes exclusively the elZinc Graphite® characteristics; it is the responsibility of installers and building site managers only to check the use of other products and techniques used on site and to make sure that these products and techniques are compatible and appropriate to use with this material.