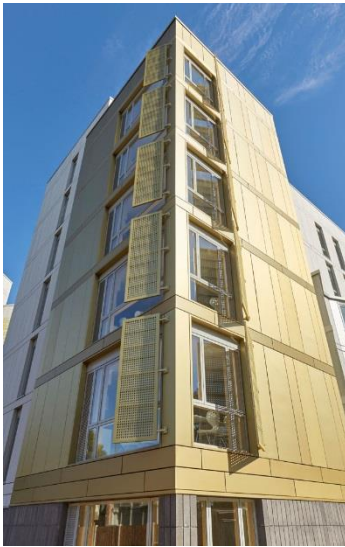
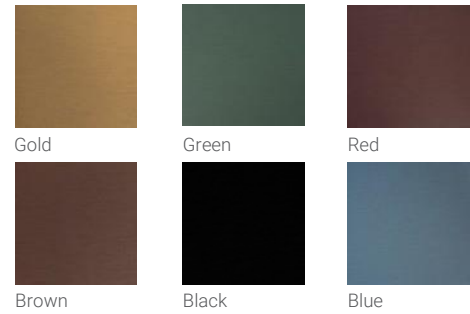


elZinc Rainbow®



elZinc® has developed a process which allows it to offer custom colours.*

**conditions apply. Contact us!*

elZinc Rainbow® is available in a range of natural, warm and attractive graded colours in red, blue, green, black, gold and brown.

elZinc Rainbow® is rolled titanium zinc that complies to both the European Standard EN988 and the American ASTM B-69. The finish is achieved by applying mineral pigments to our pre-treated zinc. The 35µm organic coating provides additional protection against corrosion as well as giving the material an attractive appearance.

Main application

- Roofing and façade cladding.
- Interior decoration

Standard measurements

- Widths: 500 - 600 - 650 - 670 - 1000 mm
- Thickness: 0,7 mm

Formats

- 1000 kg coils (internal diameter: 508mm)
 - Fixed length 100 kg coils (pallets of 6 300mm internal diameter coils)
 - Sheets 2000x1000 mm in pallets of 1000 kg
- Other formats are available upon request.

Back Face

- The back coat applied to the back face of the material is a service lacquer that has not been designed to provide any property in particular. Should there be any requirement in this regard, please contact our technical department

Reaction to fire test

A1

Warranty

elZinc Rainbow products can offer a 20-year warranty. Please contact us.

Specific recommendations

- The film must be removed immediately after installation.
- If the material is stored for a long period of time, the characteristics of the protective film may be altered, making it difficult to remove. If in doubt, please contact us.
- In order to correctly solder the material, the surface finish must be removed to reveal the shiny base metal below. To do this, elZinc recommends mechanical removal of the coating and the application of elZinc flux.
- Fold the material with an internal radius of 3x the thickness of the zinc.
- Most folding and profiling operations can be executed once the material temperature has reached 10°C.

Product use guidelines

- The colour tolerance between material making up an order will be a maximum of a delta E of 2.
- It is recommended to use material from the same production batch for each project. elZinc cannot guarantee the availability of compatible material to that previously supplied. We recommend therefore that this be taken into account when calculating the material required for each project.

- The shades of the elZinc Rainbow range can vary aesthetically depending on their environment (exposure to UV rays, proximity to the sea...) and their applications (roof, façade, soffit...) and may, in the long term, eventually evolve towards their natural patina. This process does not affect the quality of the metal.