



Roofing and Cladding systems overview  
**Prefabricated zinc tiles**

el **Zinc**<sup>®</sup>  
5



## Index

Main characteristics	5
Square tile	7
Rhomboid tile	11
Pointed fish scale tile	15
Rounded fish scale tile	19
Substrate and façade construction	22
Samples	23

## Main characteristics

eZinc® prefabricated tiles are suitable for wall cladding and for roof coverings pitched at 25° and above or 45° and above, depending on the design.

They are very easy to install, and can be cut, folded and edged as required at the boundaries of the cladding.

They can be installed over a ventilated or non-ventilated roof construction allowing the best solution to be chosen according to the characteristics of each project. The fixing is hidden. They need a continuous support behind them.

The tiles are fabricated using the eZinc® titanium zinc alloy rolled in accordance with EN988 and eZinc's own quality standards, which gives them excellent corrosion resistance (and therefore durability), high malleability, and good soldering characteristics. They are machine-manufactured using a modern stamping / bending process which ensures each tile is exactly the same as the other, making installation easier and the final result absolutely uniform. They are available in the complete eZinc® range of finishes.

There are four types of tiles in the eZinc® range:

- **Square tile**  
A square tile with a polystyrene backing giving a structured bold feel to the cladding
- **Rhomboid tile**  
A clean, elegant and slender tile that is equally at home in traditional or modern architecture
- **Rounded fish scale tile**  
An elaborate traditional zinc tile echoing the styles of historic European architecture
- **Pointed fish scale tile**  
A simpler traditional tile for a more discrete look



## Square tile

**Data sheet:**

**Application:**  
Flat cladding  
Roofs pitched above 25°

**Material:**  
elZinc® titanium zinc to EN988  
Extruded polystyrene backing

**Finishes:**  
Natural  
Slate®  
Rainbow®

**Thickness:**  
0,7mm

**Weight:**  
7,25kg/m2

**Coverage:**  
8,8 pieces/m2

**Overall height:**  
512mm

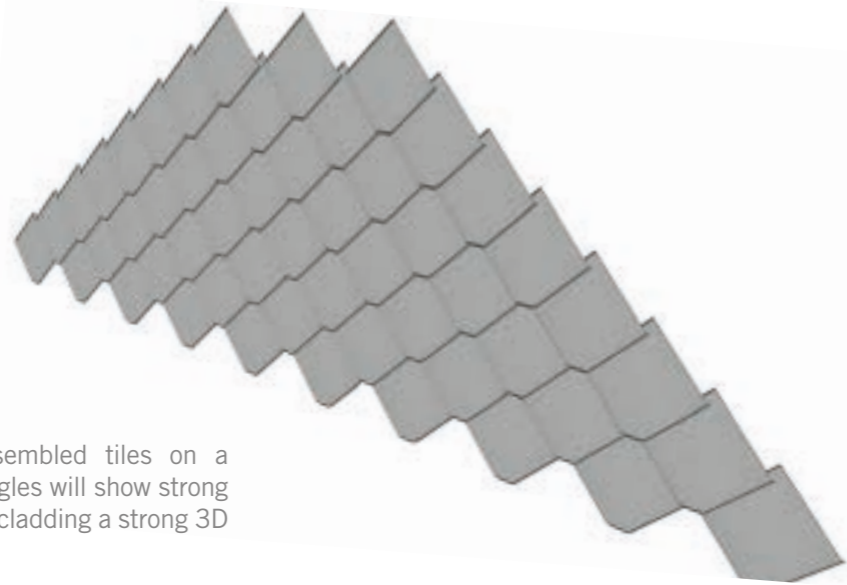
**Overall width:**  
555mm

**Surface protection:**  
Plastic film (except elZinc® natural)

**Packing:**  
24 pieces per box

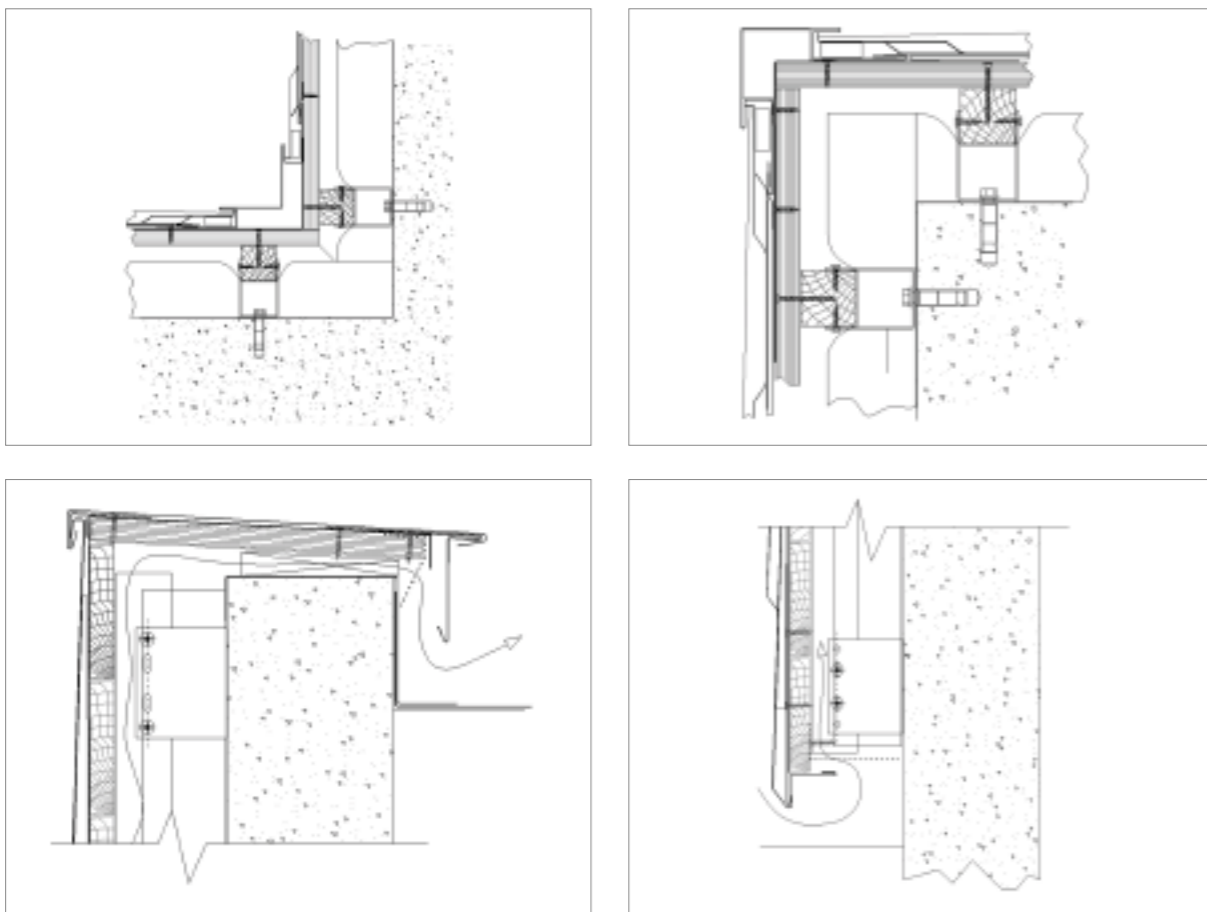
**Features:**

- Robust, clean appearance
- Quick and trouble-free installation
- Automatic fabrication ensures exact dimensions
- Polystyrene backing dampens rain drumming and increases the tile's rigidity



Model showing assembled tiles on a façade. High sun angles will show strong shadows, giving the cladding a strong 3D effect.

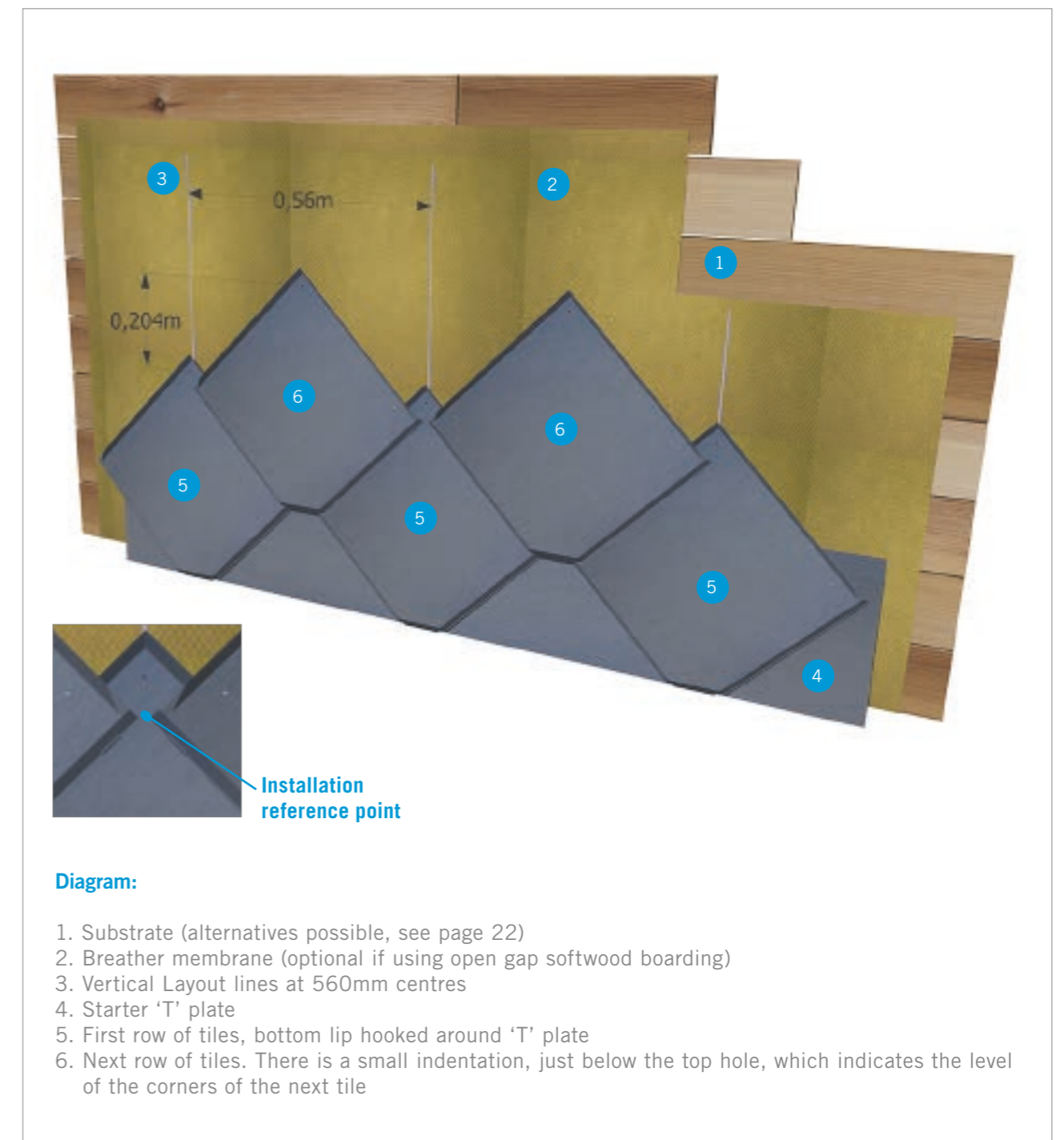
Some details are shown below to give an idea of a few of the typical details to be used with eZinc® tiles. More are available upon request.



## Installation

eZinc® square tiles are quick and trouble free to install. The tiles locked together by sliding the bottom lip up under the tiles below (through the recesses in the flanges) are direct-fixed using nails or screws through the three holes provided.

A starter 'T' plate is normally used to begin the installation at the bottom edge. At the top of the cladding, tiles are cut to size and folded according to the wall capping detail.





## Rhomboid tile

Screw / nail hole

Front view

Rear view

Oblique front view

Oblique rear view

**Data sheet:**

**Application:**  
Flat and curved cladding  
Roofs pitched above 25°

**Material:**  
elZinc® titanium zinc to EN988

**Finishes:**  
Natural  
Slate®  
Rainbow®

**Thickness:**  
0,7mm

**Weight:**  
7,8kg/m<sup>2</sup>

**Coverage:**  
14,2 pieces/m<sup>2</sup>

**Overall height:**  
560mm

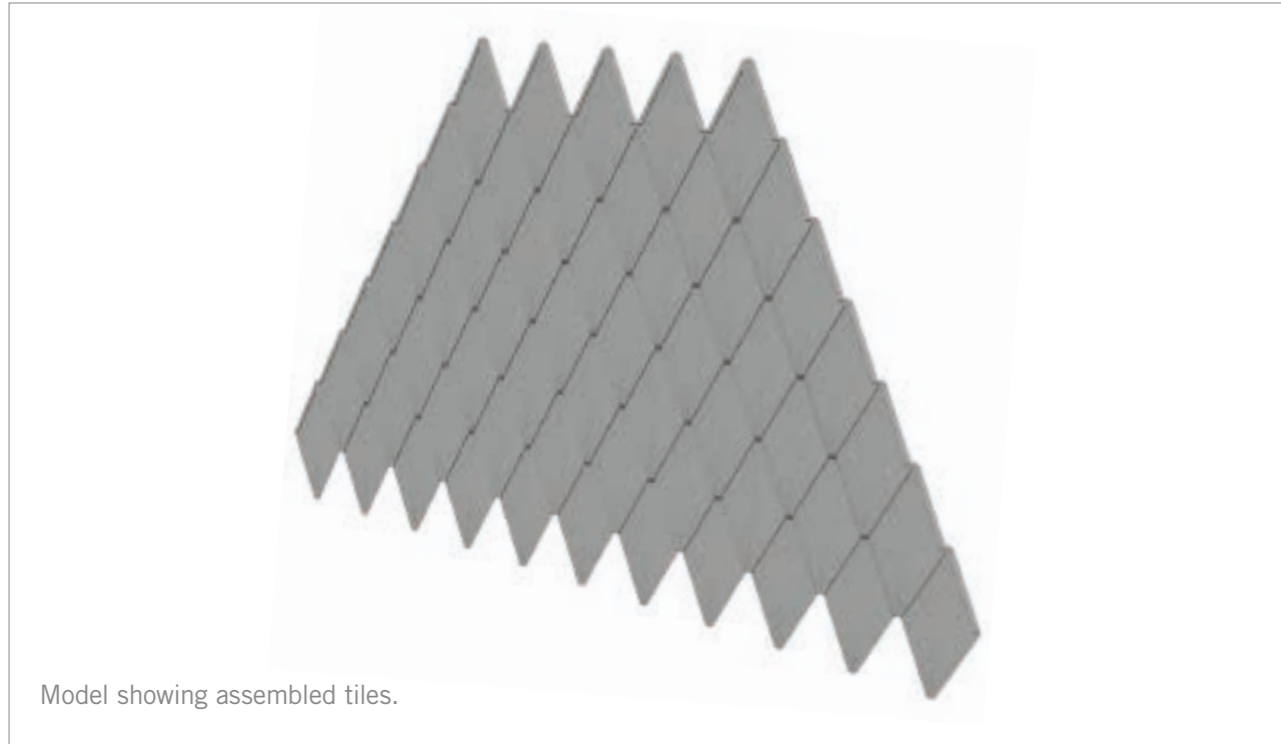
**Overall width:**  
280mm

**Surface protection:**  
Plastic film (except elZinc® natural)

**Packing:**  
35 pieces per box

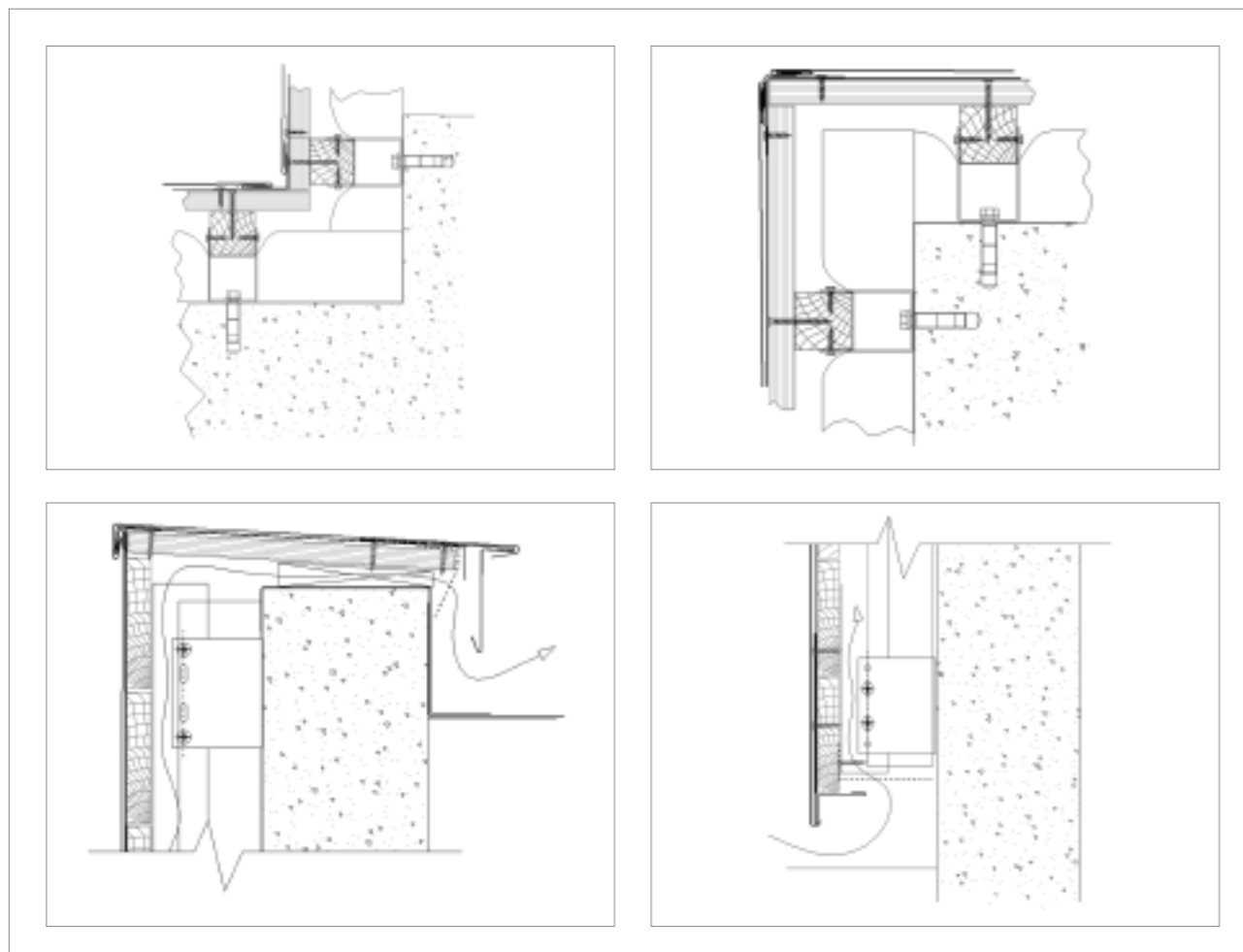
**Features:**

- Elegant and artisan appearance
- Quick and easy installation
- Automatic fabrication ensures exact dimensions
- Curved installation possible



Model showing assembled tiles.

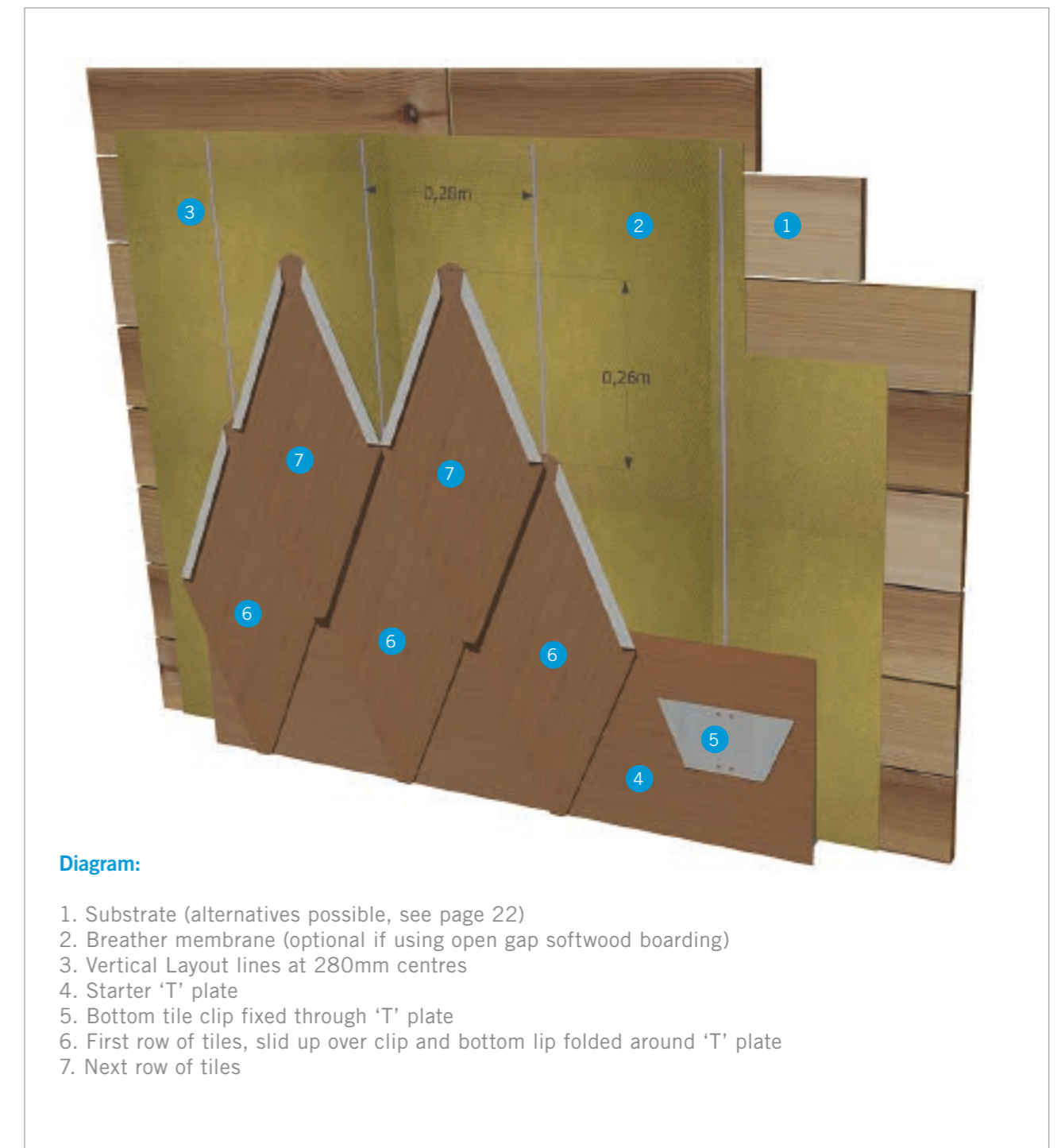
Some details are shown below to give an idea of a few of the typical details to be used with eZinc® tiles. More are available upon request.



## Installation

eZinc® rhomboid tiles are quick and easy to install. The tiles are interlocked and fixed directly at their top through the hole provided with a nail or a screw.

A starter 'T' plate is normally used to begin the installation at the bottom edge. At the top of the cladding, tiles are cut to size and folded according to the wall capping detail.



### Diagram:

1. Substrate (alternatives possible, see page 22)
2. Breather membrane (optional if using open gap softwood boarding)
3. Vertical Layout lines at 280mm centres
4. Starter 'T' plate
5. Bottom tile clip fixed through 'T' plate
6. First row of tiles, slid up over clip and bottom lip folded around 'T' plate
7. Next row of tiles



## Pointed fish scale tile

Screw / nail hole

Front view

Rear view

Oblique rear view

Oblique front view

**Data sheet:**

**Application:**  
Flat and curved cladding  
Roofs pitched above 45°

**Material:**  
elZinc® titanium zinc to EN988

**Finishes:**  
Natural  
Slate®  
Rainbow®

**Thickness:**  
0,7mm

**Weight:**  
10,9kg/m<sup>2</sup>

**Coverage:**  
72 pieces/m<sup>2</sup>

**Overall height:**  
240mm

**Overall width:**  
142mm

**Surface protection:**  
Plastic film (except elZinc® natural)

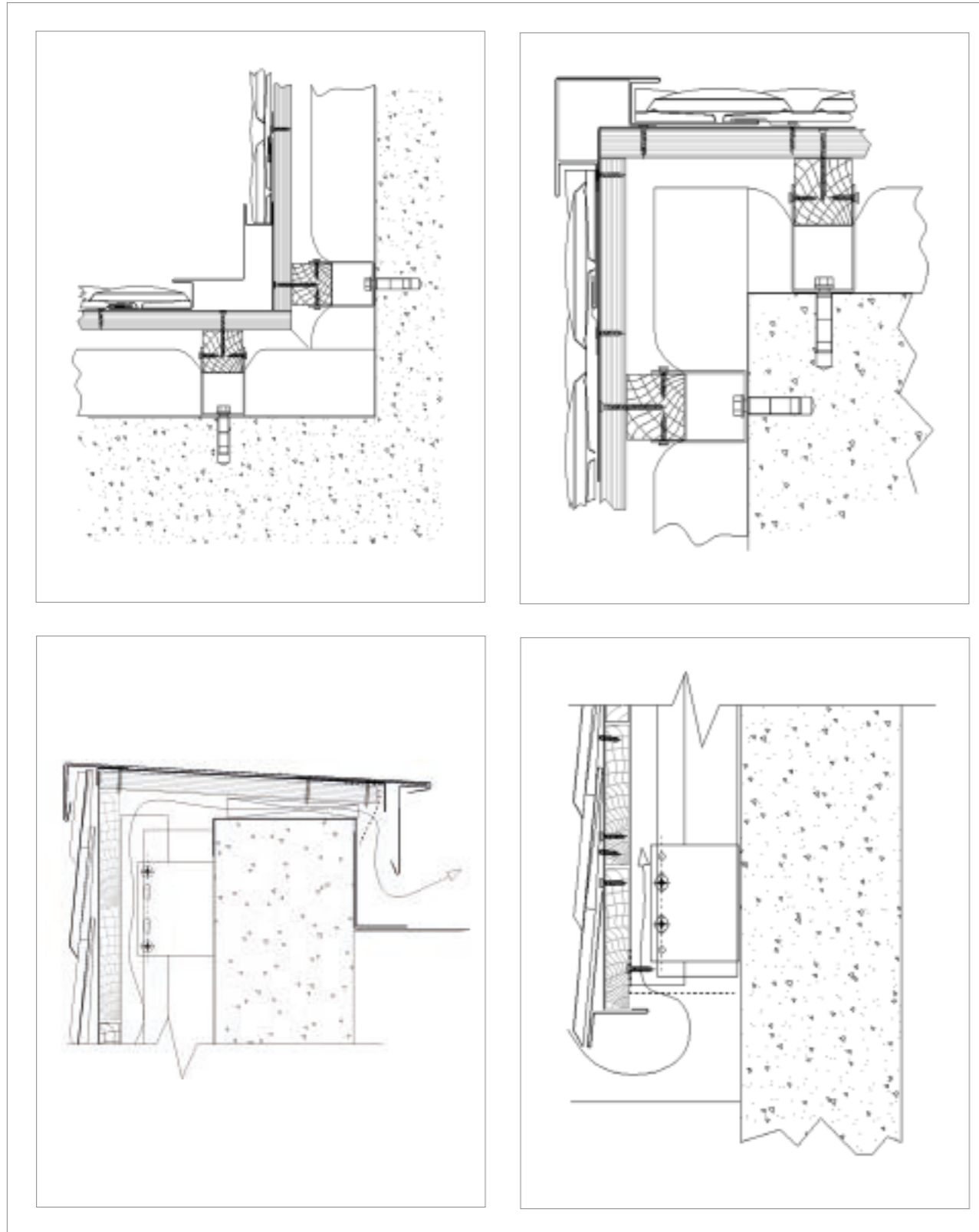
**Packing:**  
144 pieces per box

**Features:**

- Traditional appearance
- Quick and easy installation
- Automatic fabrication ensures exact dimensions

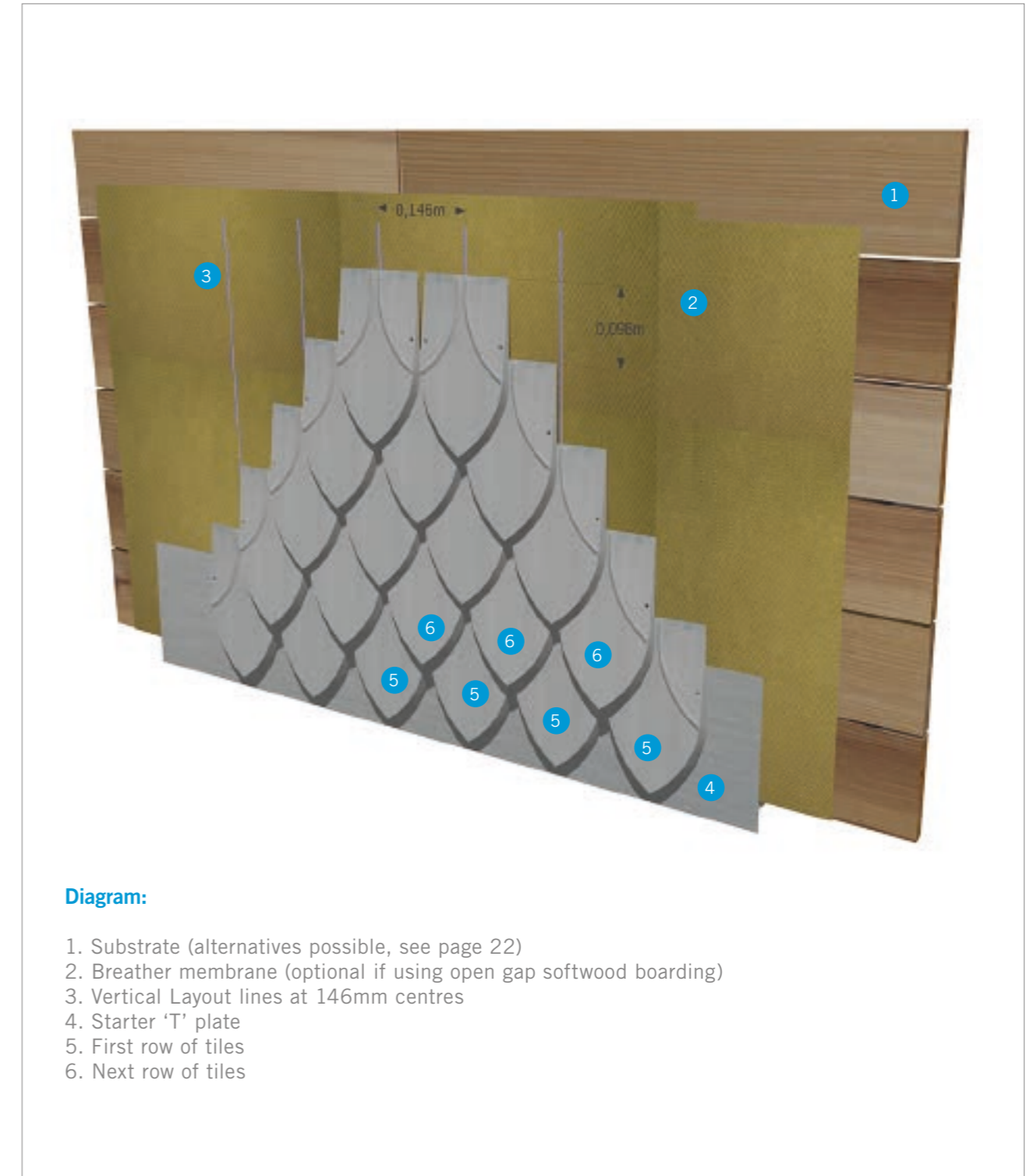


Some details are shown below to give an idea of a few of the typical details to be used with eZinc® tiles. More are available upon request.



## Installation

eZinc® pointed fish scale tiles are quick and easy to install. The tiles are overlapped and fixed directly at each side through the holes provided with a nail or a screw.



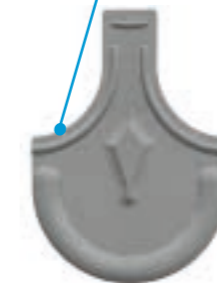
### Diagram:

1. Substrate (alternatives possible, see page 22)
2. Breather membrane (optional if using open gap softwood boarding)
3. Vertical Layout lines at 146mm centres
4. Starter 'T' plate
5. First row of tiles
6. Next row of tiles

## Rounded fish scale tile



Screw / nail hole



Front view



Rear view



Oblique rear view



Oblique front view

### Data sheet:

#### Application:

Flat and curved cladding  
Roofs pitched above 45°

#### Material:

elZinc® titanium zinc to EN988

#### Finishes:

Natural  
Slate®  
Rainbow®

#### Thickness:

0,7mm

#### Weight:

7,4kg/m<sup>2</sup>

#### Coverage:

41 pieces/m<sup>2</sup>

#### Overall height:

280mm

#### Overall width:

200mm

#### Surface protection:

Plastic film (except elZinc® natural)

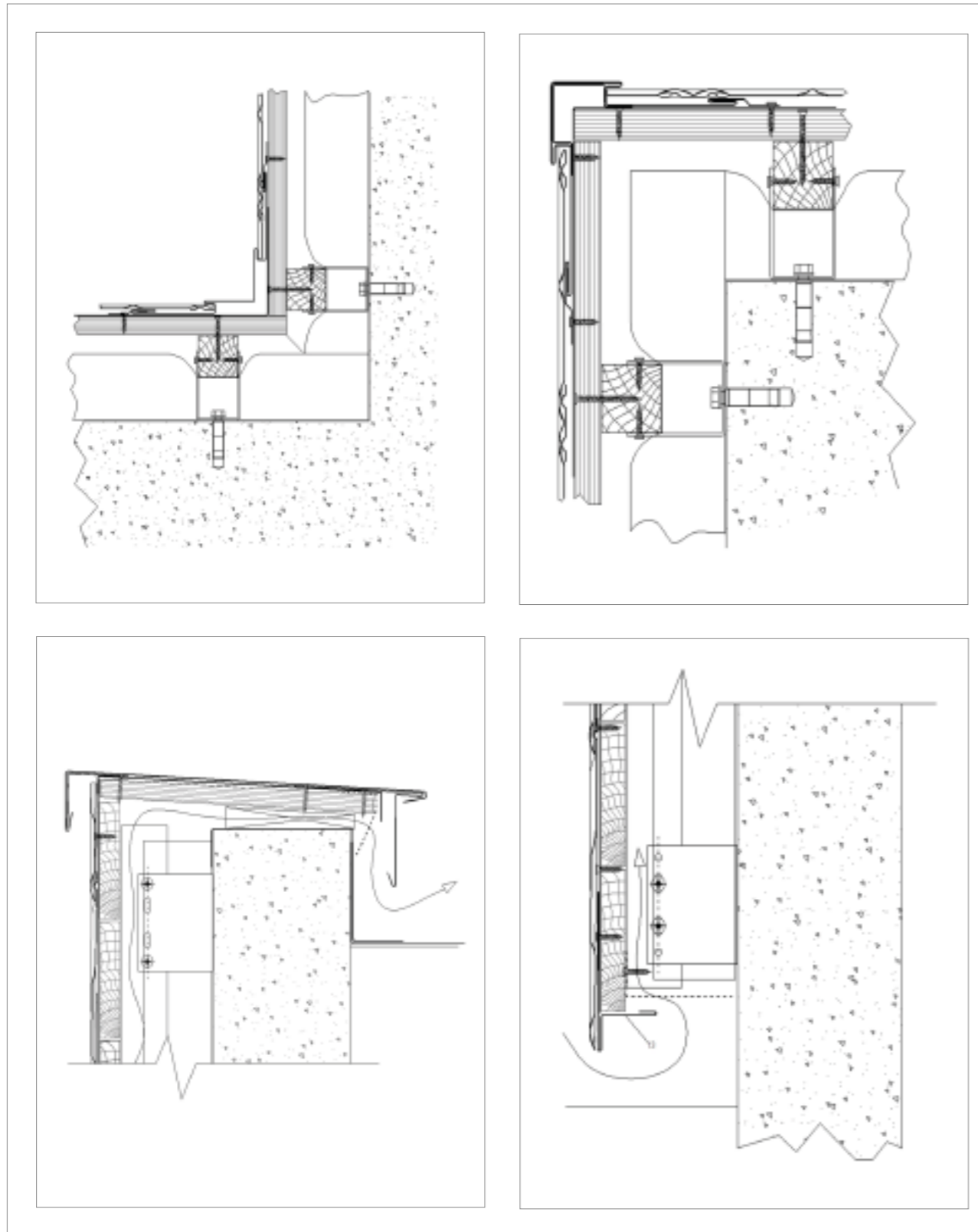
#### Packing:

104 pieces per box

### Features:

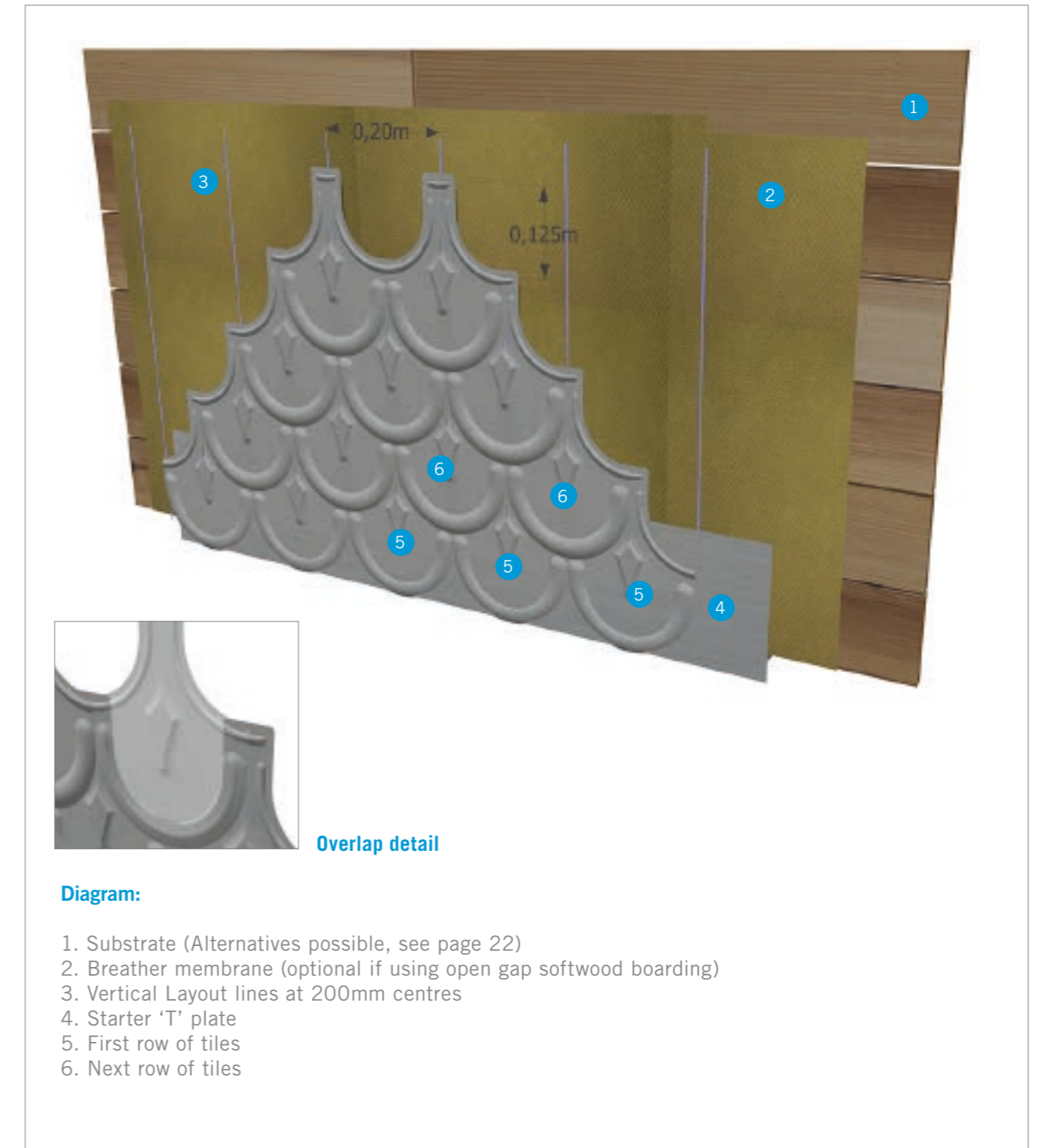
- Traditional appearance
- Quick and easy installation
- Automatic fabrication ensures exact dimensions

Some details are shown below to give an idea of a few of the typical details to be used with eZinc® tiles. More are available upon request.



## Installation

eZinc® rounded fish scale tiles are quick and easy to install. The tiles are overlapped and fixed directly at each side and the top through the holes provided with a nail or a screw.

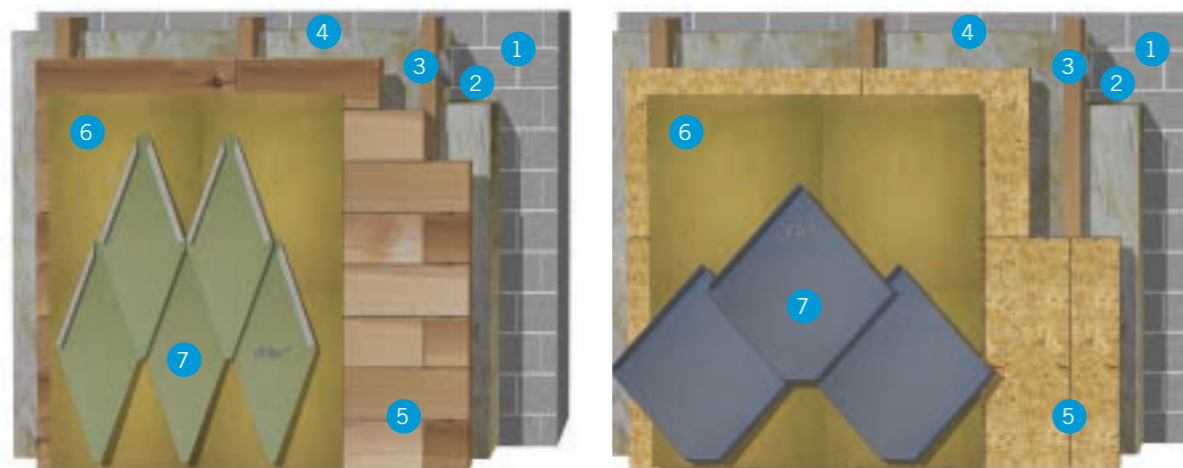


## Substrate and façade construction

The elZinc® rounded fish scale tiles are quite small in size and so for economic reasons a continuous soft wood wooden boarding or plywood or OSB sheathing is normally used to support them.

It is usually ventilated with an air layer (minimum 2cm) between it and the insulation. All of these substrate materials are combustible and therefore the relevant national building codes should be consulted to ascertain any possible limitations placed on their use in external walls.

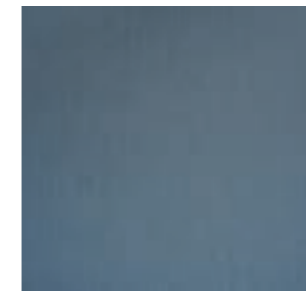
Two examples of façade construction are shown below. For more detailed information on supporting materials and wall construction, please consult our technical documentation.



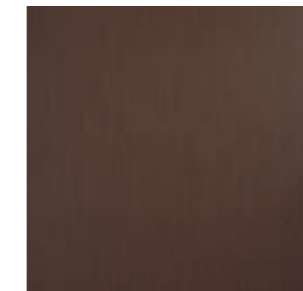
### Traditional vented substrates:

1. Concrete block structural support
2. Wall bracket
3. Soft wood battens
4. Insulation between battens
5. Substrate alternatives
  - 22 or 24mm open gap softwood boarding
  - 19mm Class 2 plywood
  - 18mm Class 3 OSB
  - 19mm Class P5 particle board
6. Breather membrane (optional if using open gap boarding)
7. elZinc® tiles

## Samples



*elZinc Rainbow® blue*



*elZinc Rainbow® red*



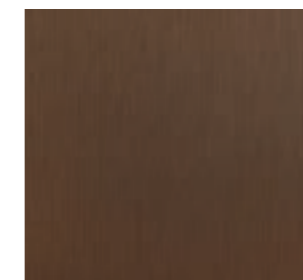
*elZinc Rainbow® green*



*elZinc® natural*



*elZinc Slate®*



*elZinc Rainbow® brown*



*elZinc Rainbow® gold*



*elZinc Rainbow® black*

Note: The colours shown in this document are for illustrative purposes only and should not be taken as representative of the real finishes. Please request our sample card to see the real elZinc® finishes.

For more detailed technical information, please consult our technical literature or contact our technical advisory Service.



ASTURIANA DE LAMINADOS, S.A. has developed the instructions and recommendations herein with the aim of providing a better service for its customers. It is generic information for standard installation of elZinc® products in a European climate.

This information must not substitute the considerations and requirements that, in each project, architects, designers and consultants may offer.

ASTURIANA DE LAMINADOS, S.A. does not accept any responsibility therefore for any damage incurred to third parties, directly or indirectly by the misapplication, misinterpretation or general incorrect use of the information contained herein, exonerating itself from all and any responsibility deriving from this document, within the legal framework established and applicable in each case.

We remind readers that ASTURIANA DE LAMINADOS, S.A. provides an advisory service to assist in the interpretation and use of this information should any doubts arise in this regard.

## **Factory**

### **Asturiana de Laminados, S.A.**

Polígono Industrial de Villallana,  
Parcela 1

33695 Villallana - Spain

Tel (0034) 98 410 60 00

Fax (0034) 985 49 32 02

## **Headquarters**

### **Asturiana de Laminados, S.A.**

Polígono Industrial de Olloniego,  
Parcela C1

33660 Olloniego - Spain

Tel (0034) 98 567 60 00

Fax (0034) 98 569 20 00

January 2015

[www.elzinc.co.uk](http://www.elzinc.co.uk)

[elzinc@aslazinc.com](mailto:elzinc@aslazinc.com)