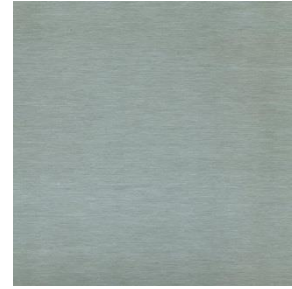


# elZinc Slate®



elZinc Slate®



*elZinc Slate® is also used in renovation since it blends in easily with existing weathered zinc.*

elZinc Slate® is a matt light grey rolled zinc with a very similar appearance to naturally weathered zinc.

The pre-weathering process uses a non-polluting phosphate treatment which gives it a uniform appearance that would have only developed naturally after a considerable period of exposure to the weather. elZinc Slate® is especially recommended for façades and soffits, where bright rolled zinc takes longer to naturally develop its patina.

elZinc Slate® clearly has applications in restoration and renovation work since its pre-weathering allows it to blend in very well with the existing zinc.

elZinc Slate® is produced according to the European Standards EN1179 and EN988 and American Standard ASTM B-69, with a chemical composition similar to that of elZinc® Natural. Electrolytic zinc with a purity in excess of 99.995% zinc is used, to which small and tightly controlled quantities of copper and titanium are added to produce an alloy whose properties better the requirements stipulated in standards in force. These properties are unaffected by the pre-weathering treatment.

## Main application

- Roofing and façade cladding.
- Rainwater systems
- Interior decoration

## Standard measurements

- Widths: 500 - 600 - 650 - 670 - 1000mm
- Thicknesses: 0,65 - 0,7 - 0,8 - 1mm

Other non-standard thicknesses are available upon request, from a minimum of 0,5mm to a maximum of 1,2mm.

## Formats

- 1000 kg coils (internal diameter: 508mm)
- Fixed length 100 kg coils (pallets of 6 300mm internal diameter coils)
- Sheets 2000x1000mm in pallets of 1000kg

Other dimensions are available upon request.

## Specific working recommendations

- Correct behavior of the film on removal cannot be guaranteed beyond 12 months after dispatch from elZinc plus the maximum times allowed after installation – 3 months on sunlight areas and 6 months on shaded areas. Adhesive residue can also remain on the surface of the zinc, which is difficult to remove.

- In order to correctly solder the material, the surface finish must be removed to reveal the shiny base metal below. To do this, elZinc recommends elZinc Flux, which has been specially developed for this purpose.

- Most folding and profiling operations can be executed once the material temperature has reached 7°C.

- Fold the material with an internal radius of 2x the thickness of the zinc.

- Having a pre-patinated finish, elZinc Slate can show slight variations in shade.

- In locations with high salinity, we recommend the use of **elZinc Slate Advance** for projects that have areas that are not washed by the rain

For more information, contact us or visit our webpage: [www.elzinc.es](http://www.elzinc.es)

*This document only describes the characteristics of elZinc, Slate and it is the responsibility of construction professionals to check that other materials and techniques used on the project are compatible with this material.*